



45, Willis Way, Purton, SN5 4BD

Guide Price £372,500

richard james

Village & Country Homes

richard
james



Willis Way

Purton



Take a look at this immaculate and beautifully presented three-bedroom semi-detached family home, complete with a driveway to the side and a stunning, generously sized private landscaped rear garden.

Situated within the highly sought-after Willis Way development in the charming village of Purton, this exceptional home must be viewed at the earliest opportunity to fully appreciate its light-filled, modern interior and high standard of finish throughout. Purton itself offers a wonderful blend of village charm and convenience, with excellent local amenities, well-regarded schools, and easy access to both Swindon and the surrounding countryside.

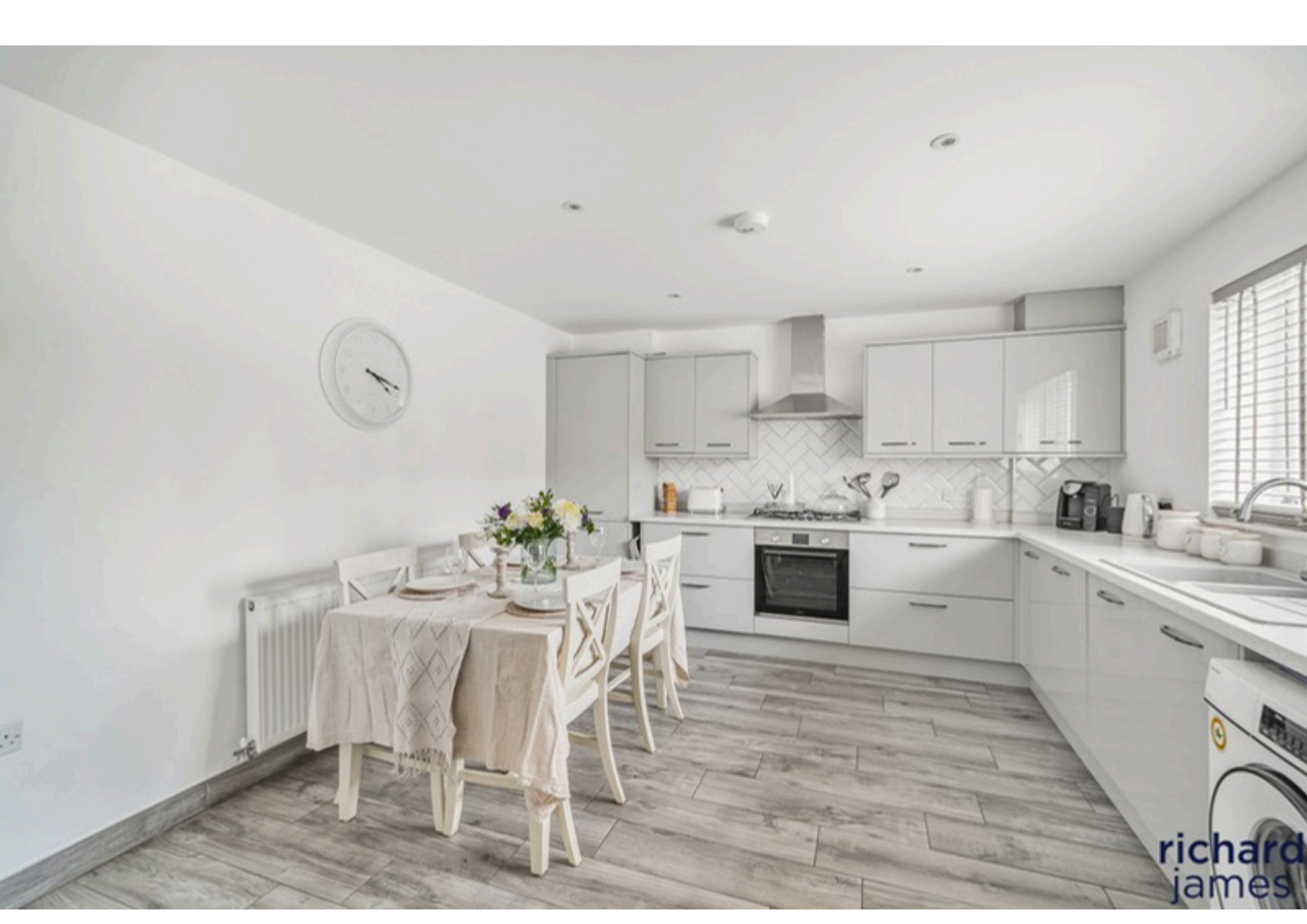
The well-balanced accommodation briefly comprises three bedrooms, including a spacious principal bedroom with ensuite, a contemporary fitted family bathroom, and a bright, airy landing. To the ground floor, there is a welcoming entrance hall, cloakroom, an impressive dual-aspect 22ft living room featuring a stylish built-in media wall, and a modern kitchen/dining room fitted with a range of integrated appliances—perfect for both everyday living and entertaining.

Further benefits include uPVC double glazing and gas central heating.

Externally, the property continues to impress with a driveway providing off-road parking to the side, along with a beautifully landscaped, private rear garden. There is also a versatile outbuilding with light and power, ideal for use as a home office, gym, or additional storage.

Welcome home...













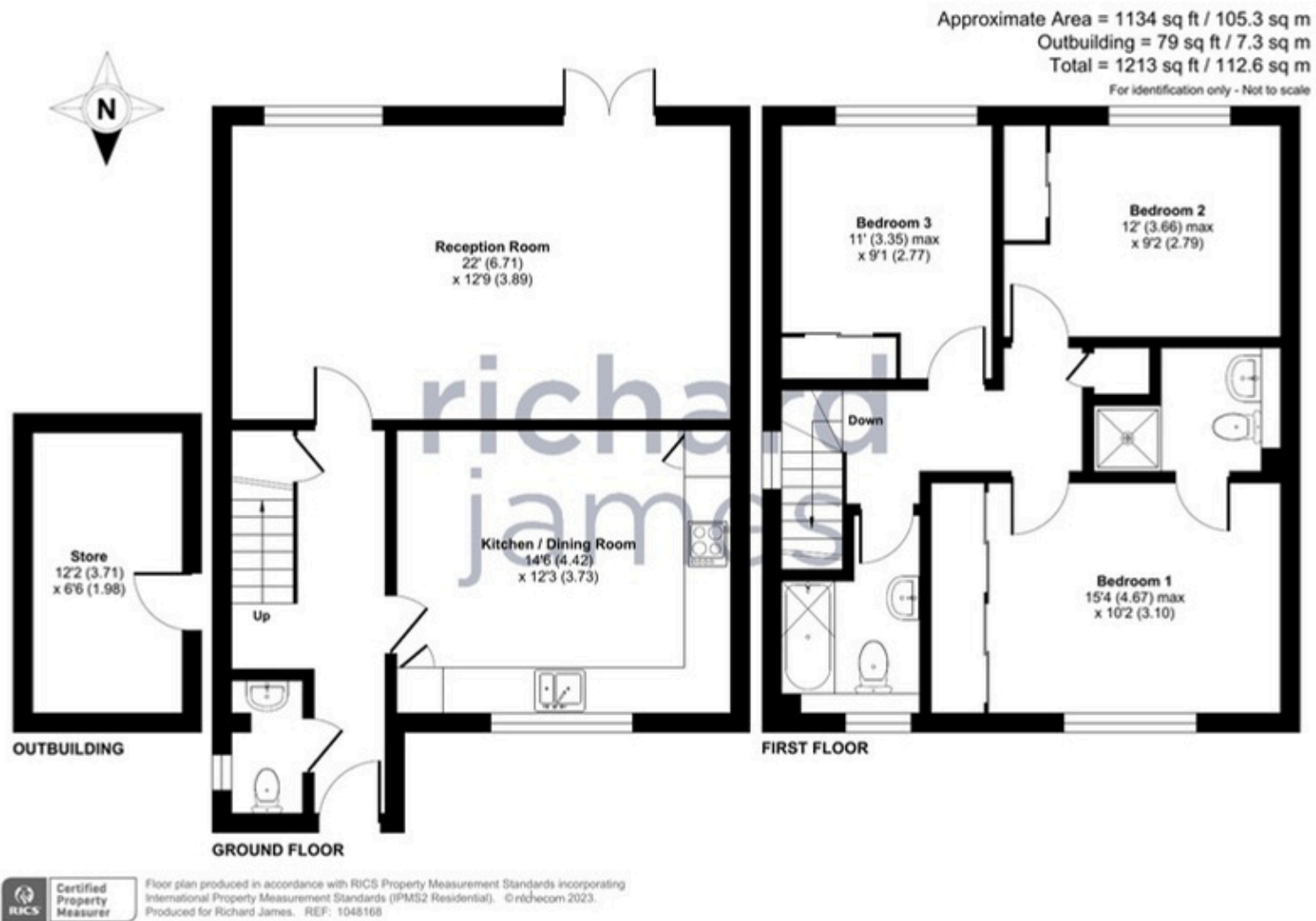


richard
james





Floorplan



01793 855 117

rw@richardjames.uk

139 High Street | Royal Wootton Bassett | SN4 7AY

richard james

richardjames.uk