



## GREENWICH HIGH ROAD, SE10

£2,650 per month

Modern apartment  
Three double bedrooms  
Open plan kitchen/reception  
Private balcony  
Close to stations  
Energy rating:

@marshandparsons  
marshandparsons.co.uk

MARSH &  
PARSONS



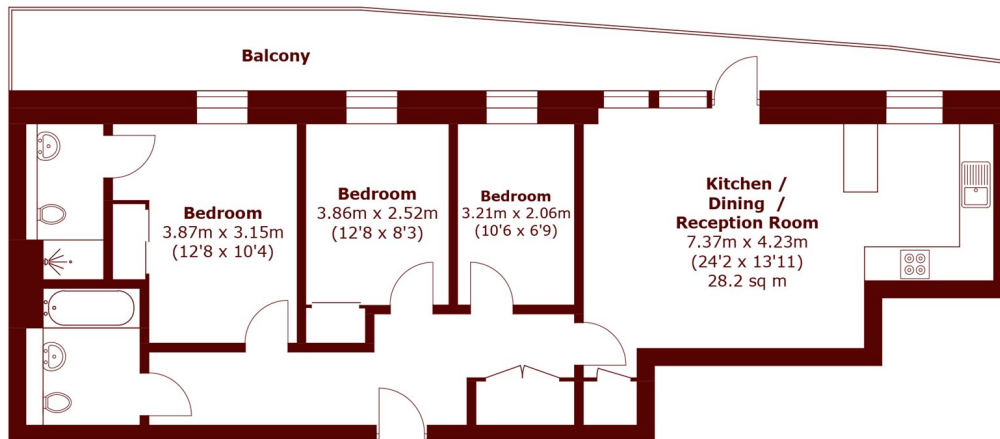
# ABOUT THE PROPERTY

A spacious and modern top floor apartment located moments away from DLR stations. Interior comprises a large reception room and open plan kitchen with a spacious private balcony. All three bedrooms are double in size, a main bathroom suite with shower and an en suite shower room in the master bedroom.

Greenwich rail and DLR stations are within a short walk away as well as Deptford DLR. Greenwich park and town centre are also close by.



# STEP INSIDE GREENWICH HIGH ROAD



Total area (approx.): 81.5 sq. m (877.2 sq. ft)  
Balcony: 20.0 sq. m (215 sq. ft)

Greenwich  
020 8815 2230

Energy Rating: We aim to make our particulars both accurate and reliable. However, they are not guaranteed; nor do they form part of an offer or contract. If you require clarification on any points then please contact us, especially if you're traveling some distance to view. Please note that appliances and heating systems have not been tested and therefore no warranties can be given as to their good working order

MARSH &  
PARSONS