

HARWOOD

THE ESTATE AGENT

01952 881010

The Granary, White House Farm Barns, Leighton SY5



£ 5 5 0, 0 0 0 region

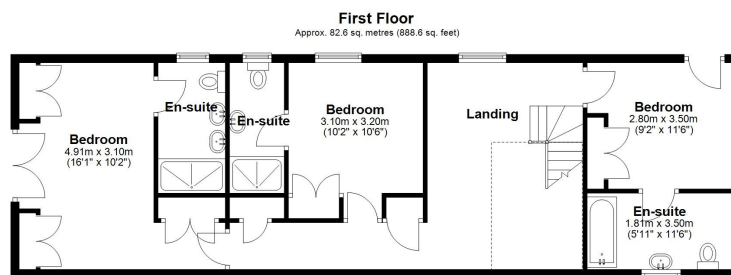
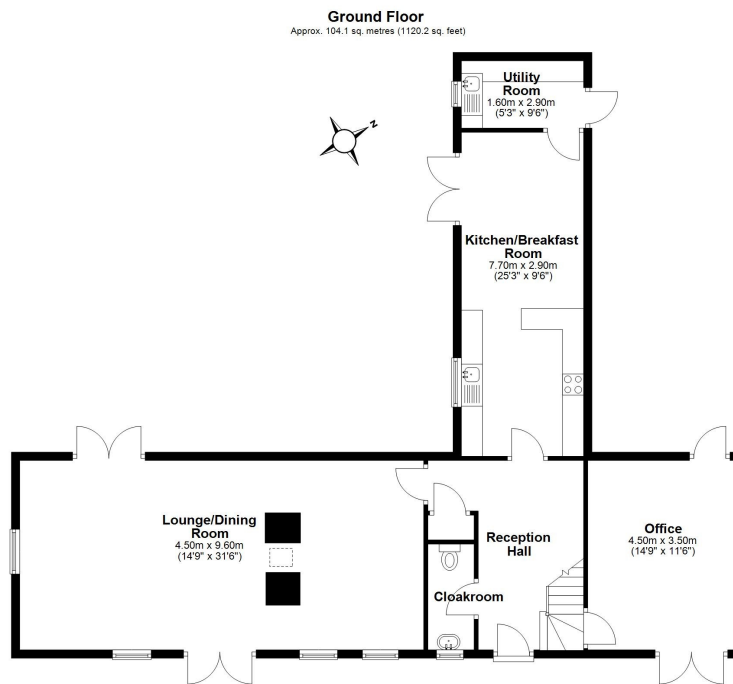
This delightful converted barn is situated in a rural location, with a popular food focused public house 'The Mill at Leighton' within walking distance. Shrewsbury, Much Wenlock, Ironbridge and Telford are all easily accessible. This characterful home offers a generous and well-considered layout arranged over two floors, designed to support modern family living with a strong sense of space and flexibility. The ground floor centres around a spacious kitchen and breakfast area that runs the depth of the property, creating a bright and sociable hub ideal for everyday life and entertaining, a woodburner provides a cosy feel in the cooler weather. From here, the accommodation flows into an impressive lounge and dining room with double sided open fireplace, a superb open-plan space that comfortably accommodates both relaxed seating and more formal dining. A separate room sits to the front of the property and is currently arranged as an office, though its size and position make it equally suitable as a fourth bedroom or guest room if required. A useful utility room, cloakroom and a welcoming reception hall complete the ground floor and add further practicality. Upstairs, the property features three well-proportioned bedrooms, each enjoying the convenience and privacy of its own en-suite. The arrangement creates an excellent balance for families, visiting guests or those who value independent space. A central landing ties the first floor together and enhances the sense of openness throughout. Parking for three vehicles is located to the front of the property and two carports provide undercover storage. The rear garden is divided into two separate delightful areas (both low maintenance), and benefiting from plenty of sunshine, ideal for relaxing or entertaining. Overall, this is a thoughtfully designed home with generous rooms, a flowing layout and the versatility to adapt to a range of lifestyles, making it an appealing choice for modern living.

Score	Energy rating	Current	Potential
92+	A		
81-91	B		
69-80	C		
55-68	D		
39-54	E		54 E
21-38	F	26 F	
1-20	G		









Total area: approx. 186.6 sq. metres (2008.8 sq. feet)

Tenure Freehold **Council tax** Band F

Fixtures & Fittings Where specifically mentioned in these sales particulars are included in the sale price.

N.B Please note, that none of the services, heating systems or any appliances at this property have been tested, therefore no warranty can be given or implied as to their working order. These particulars do not constitute or form a part of any contract. Whilst Harwood Estate Agents and their employees take every care in the preparation of these particulars they hereby state both on behalf of themselves and the vendor that no intending purchaser should rely on any of the statements of representation of fact and the intending purchaser should make his/her own inspection and enquiries in order to satisfy himself/herself of their authenticity and no responsibility is accepted for any error or omission herein.

Details prepared : 11th May 2026