



**Elmers Drive, TW11**

**£499,950**

**Dexters**



## Elmers Drive, TW11

This spacious three bedroom apartment is in an excellent location close to schools and transport links, offered with a shared garden, parking and large flexible living space. The property is offered to the market with no onward chain.

The apartment is situated on the first floor. As you enter into the hallway, the large living room is to the front of the property which has large windows and doors opening out to the private balcony. The separate kitchen is just off the reception that has generous storage space and all appliances.

To the rear of the property are three double bedrooms, the family bathroom and also a separate WC. The property further benefits from a shared rear garden and also off-street parking.

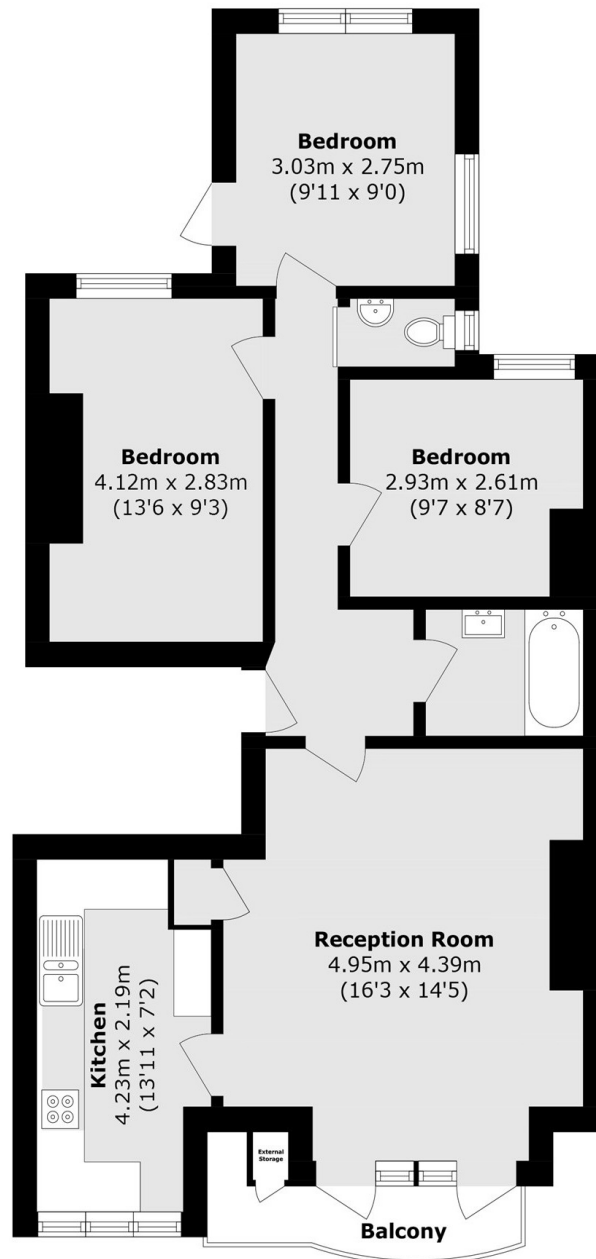
Elmers Drive is located alongside Kingston Road, close to Kingston Road's local shops, cafés and bus routes to both Kingston town centre and Teddington High Street. Mainline station is 0.57 miles away.

### Features

- Three Bedrooms
- Shared Garden
- Separate Kitchen
- Large Reception Room
- Private Balcony
- Allocated Parking



# Elmers Drive, Teddington, TW11



Total area (approx.): 69.7 sq. m (750.3 sq. ft)  
Balcony area (approx.): 3.3 sq. m (36.6 sq. ft)  
(Excluding External Storage)