

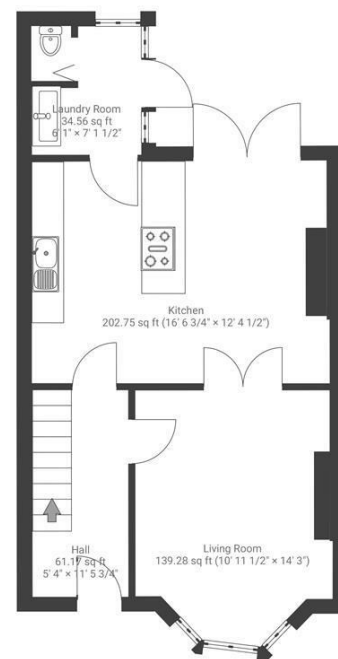
Boardwalk

Highworth Road

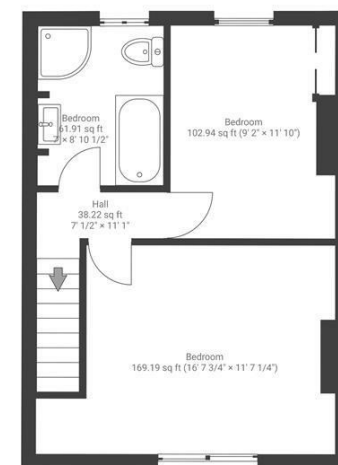
ST ANNES, BRISTOL

Highworth Road BRISLINGTON

APPROXIMATE FLOOR AREA
78.9 SQM / 850 SQFT



GROUND FLOOR



FIRST FLOOR

Boardwalk

Highworth Road

ST ANNES, BRISTOL

£

£350,000



BS4 4AQ

zzz

2 Bedrooms



2 Bathrooms

"I absolutely loved how open and airy the kitchen and dining area felt - it made having friends and family over so much fun and super connected. In winter, nothing beat lighting up the wood burner and getting that warm, cosy vibe going."

