



Northumberland
Properties

Bramble House Hillside, Rothbury
£375,000





Bramble House Hillside

Rothbury, Morpeth

Council Tax band: D

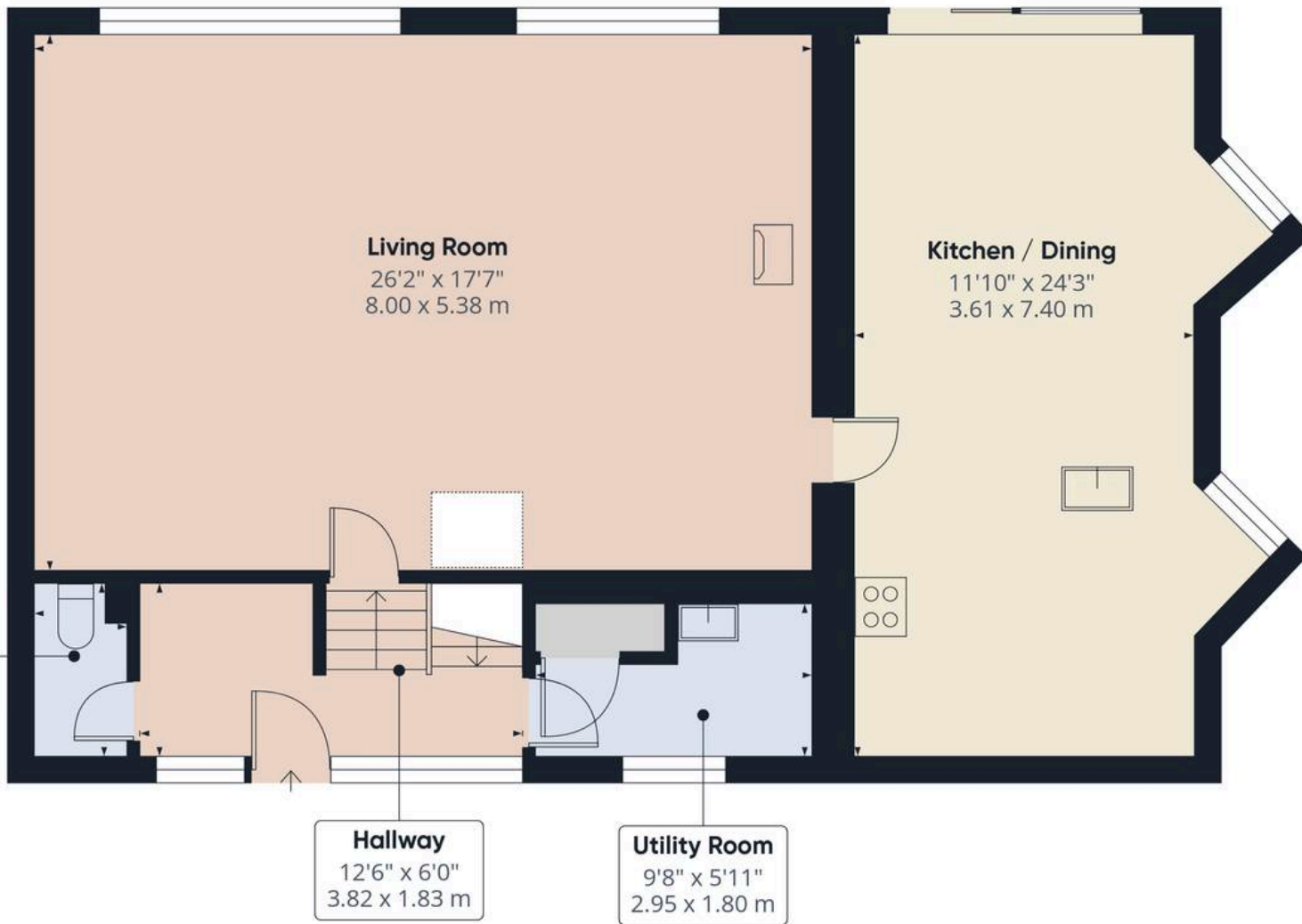
Tenure: Freehold

EPC Energy Efficiency Rating: C

EPC Environmental Impact Rating:

- A sought-after Northumberland market town surrounded by outstanding countryside
- Spacious, extended 4 bedroom semi-detached home of unique split-level design
- Well-proportioned accommodation with two reception rooms
- Upper-level reception rooms with impressive picture windows and exceptional natural light
- Four rear-facing bedrooms including a main bedroom with en-suite
- Updated kitchen and bathrooms
- Driveway and single garage, with rear terrace and lawned garden
- Conveniently located close to the town centre





Approximate total area⁽¹⁾
 920 ft²
 85.5 m²

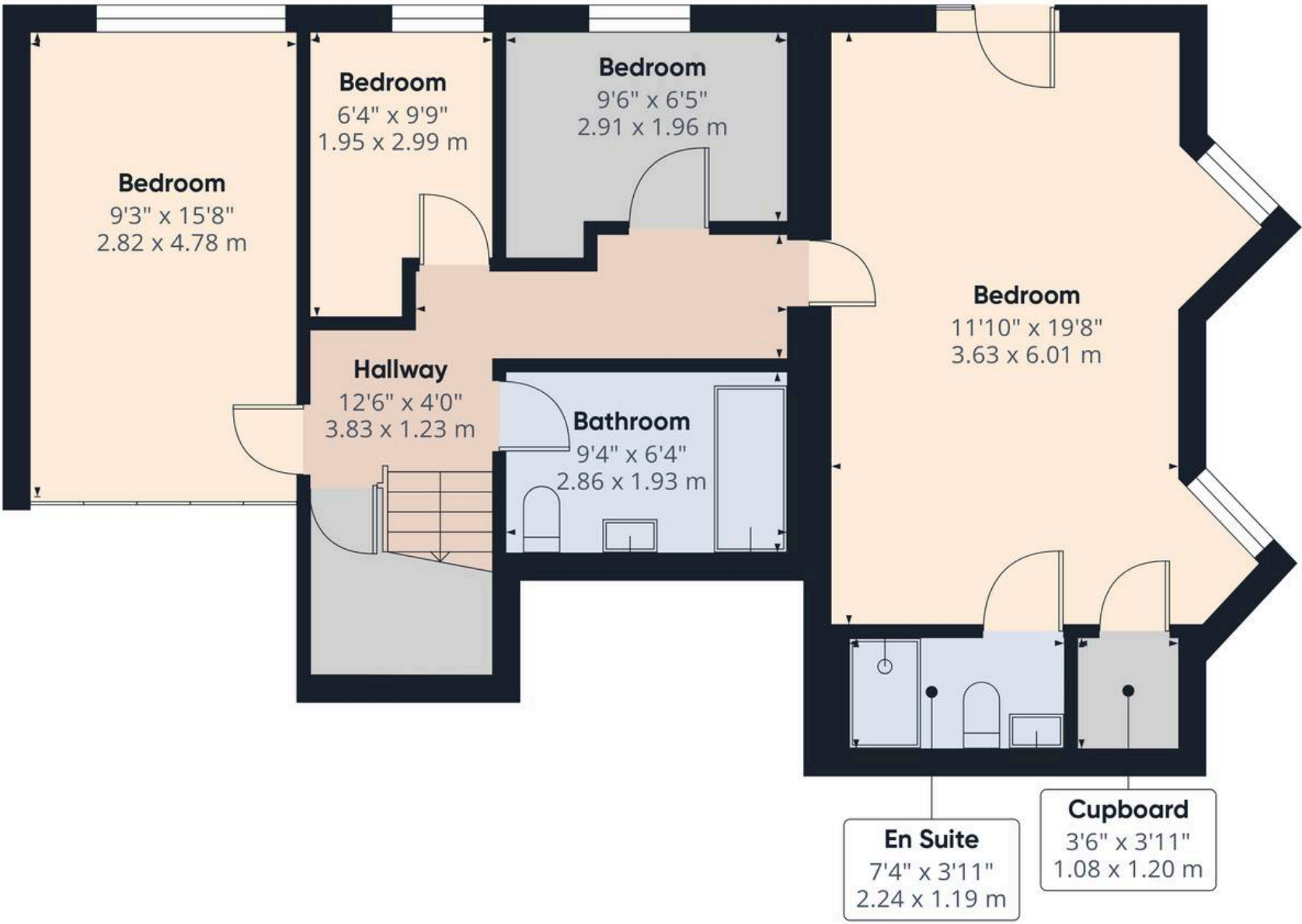
(1) Excluding balconies and terraces

Calculations reference the RICS IPMS 3C standard. Measurements are approximate and not to scale. This floor plan is intended for illustration only.

GIRAFFE360

Floor 1 Building 1





Approximate total area⁽¹⁾
734 ft²
68.2 m²

(1) Excluding balconies and terraces

Calculations reference the RICS IPMS 3C standard. Measurements are approximate and not to scale. This floor plan is intended for illustration only.

GIRAFFE360



First Floor Building 1





PLANNER

MONDAY	TUESDAY	WEDNESDAY	THURSDAY





Rothbury is a charming and vibrant market town that perfectly blends rural beauty with community spirit. Surrounded by the rolling hills of the Coquet Valley and lying on the edge of the stunning Northumberland National Park, it offers an idyllic setting for walking, cycling, and exploring the great outdoors. With its scenic riverside walks, historic architecture, and easy access to nearby attractions such as Cragside House, Rothbury is an ideal place to call home for those seeking both tranquillity and a lively village community.

Utility's:

- Oil Central Heating
- Log Burner
- Mains Electric
- Mains Water
- Mains Waste



Northumberland Properties

12 Market Street, Alnwick - NE66 1TL

01665660910 • info@northumberlandproperties.co.uk • www.northumberlandproperties.co.uk



Northumberland
Properties