



Cross Street, Tyldesley
Manchester



In Excess of £260,000

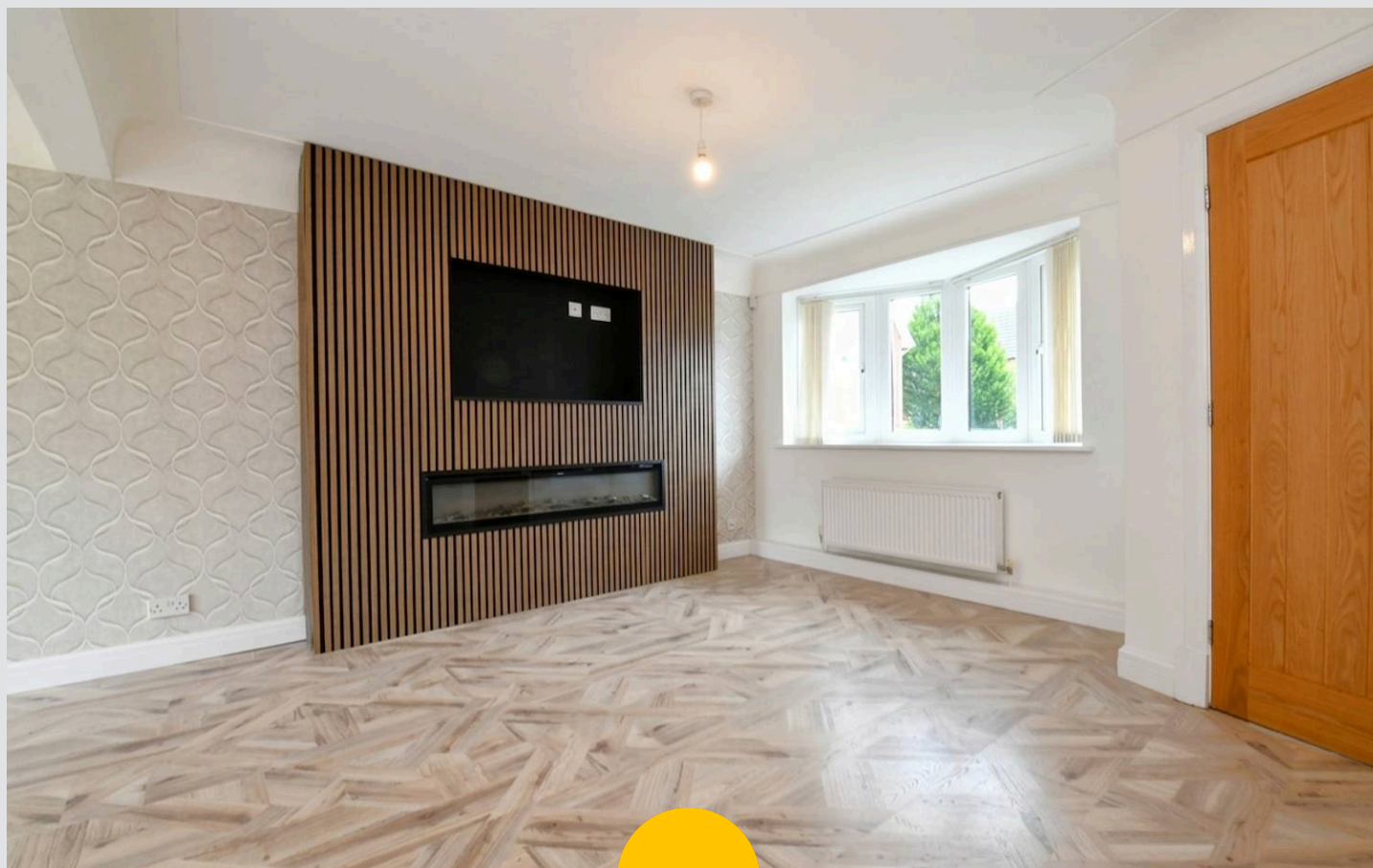
7 Cross Street

Tyldesley, Manchester

Recently Renovated Three Bedroom Link Detached Property Within Walking Distance of the Guided Busway and Tyldesley Town Centre! Benefits from a Brand New Kitchen, New Flooring and Redecoration! Council Tax band: C

Tenure: Freehold

- Recently Renovated Three Bedroom Link Detached Property
- Bright, Open Plan Living, Dining and Kitchen Area Complete with a Bay Window and Sliding Doors
- Benefits from a Brand New Fitted Kitchen and New Flooring
- Three Well-Proportioned Bedrooms
- Modern Three-Piece Bathroom
- Driveway and a Garage to the Side for Off-Road Parking
- Generously-Sized Garden to the Rear, Along with Access to the Side
- Just a Short Walk from Tyldesley Town Centre which is Host to a Fine Array of Bars, Shops and Restaurants
- Within Walking Distance of the Guided Busway, which Provides Direct Access into Manchester City Centre
- Close to Plenty of Green Space, with Fields Within Walking Distance



HILLS



Hallway

Lounge

12' 10" x 12' 6" (3.90m x 3.80m)

Kitchen Diner

16' 2" x 9' 9" (4.92m x 2.96m)

Landing

Bedroom One

11' 4" x 9' 5" (3.45m x 2.88m)

Bedroom Two

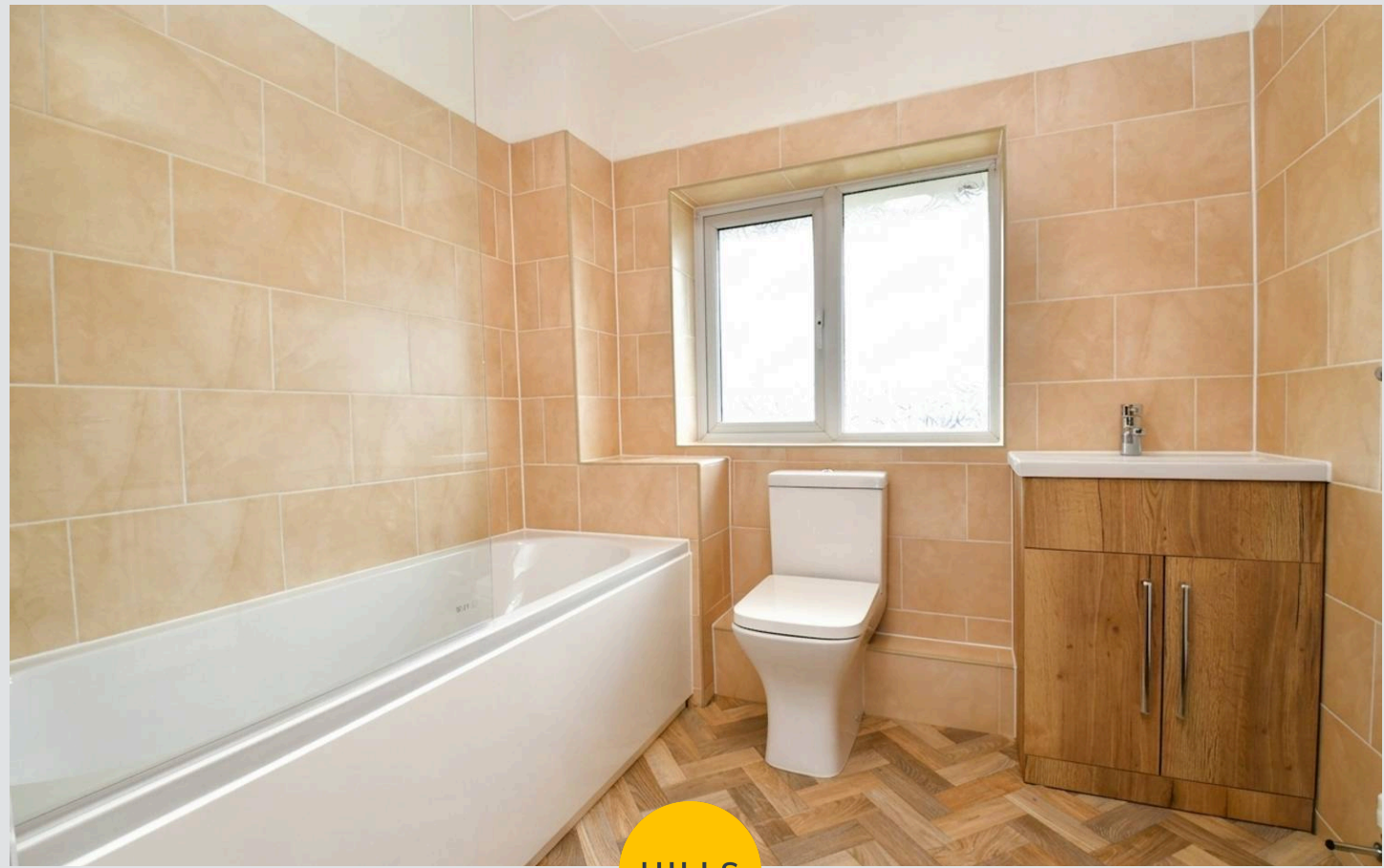
11' 1" x 8' 3" (3.37m x 2.52m)

Bedroom Three

6' 6" x 6' 4" (1.97m x 1.93m)

Bathroom

7' 6" x 6' 6" (2.28m x 1.98m)



HILLS



Hallway

Lounge

12' 10" x 12' 6" (3.90m x 3.80m)

Kitchen Diner

16' 2" x 9' 9" (4.92m x 2.96m)

Landing

Bedroom One

11' 4" x 9' 5" (3.45m x 2.88m)

Bedroom Two

11' 1" x 8' 3" (3.37m x 2.52m)

Bedroom Three

6' 6" x 6' 4" (1.97m x 1.93m)

Bathroom

7' 6" x 6' 6" (2.28m x 1.98m)



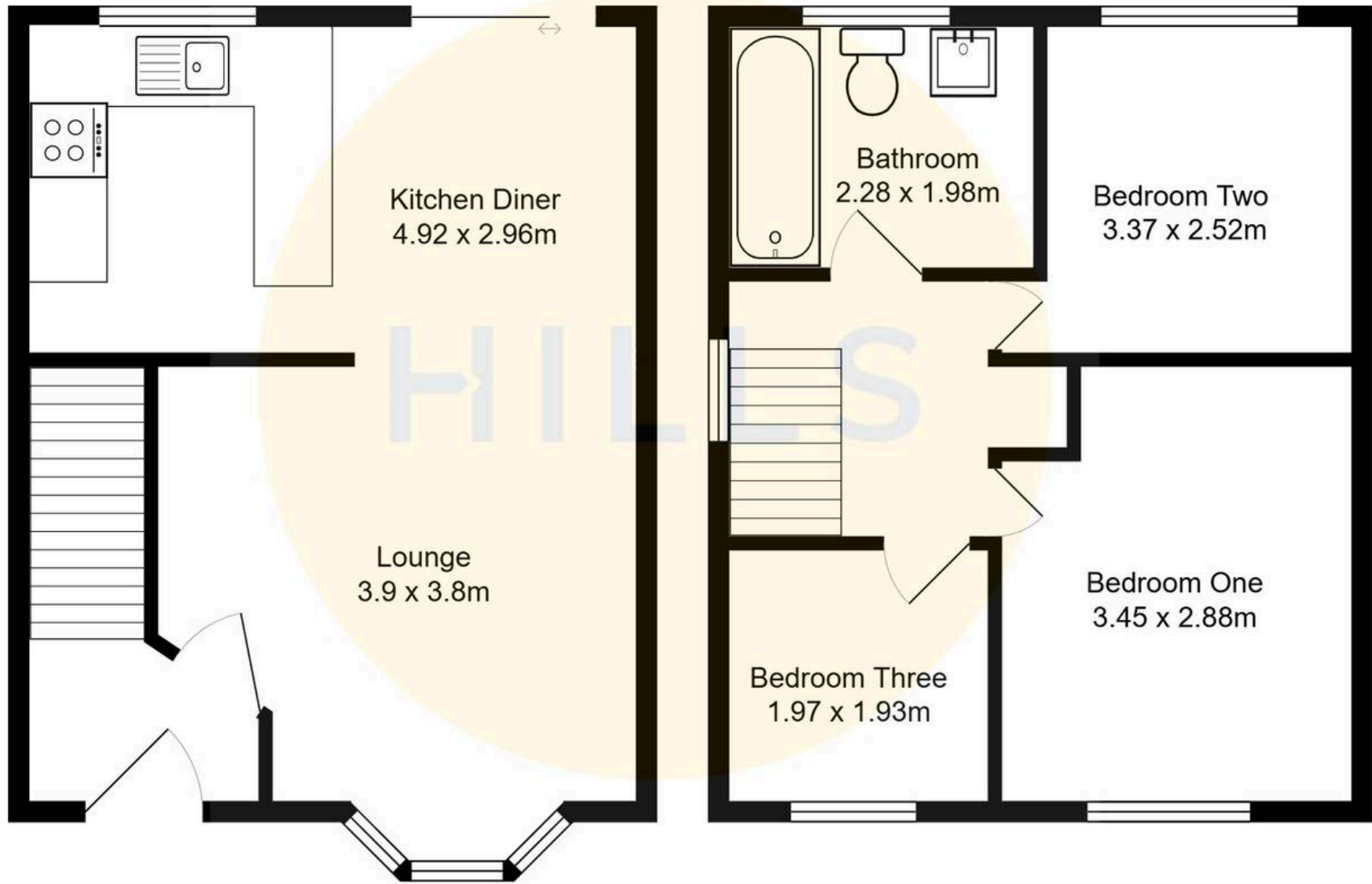
HILLS





HILLS







Hills | Salfords Estate Agent

Hills Residential, Sentinel House Albert Street - M30 0SS

0161 707 4900

sales@hills.agency

www.hills.agency/



By law, we are required to conduct anti-money laundering checks on all potential buyers and sellers. In line with HMRC guidelines, our trusted partner, Coadjute, will securely manage these checks on our behalf. A non-refundable fee of £45 + VAT per person will apply, and Coadjute will handle the payment. Once an offer is accepted, Coadjute will send a secure link for you to complete the biometric checks. These checks must be completed before we can send the memorandum of sale to all parties. PLEASE NOTE: The Agent has not tested any equipment, fixtures, fittings or services so cannot verify that they are in working order or fit for the purpose. References to the properties tenure are based on information supplied by the seller. You are advised to check the availability of this property before travelling any distance to view. Every effort has been made to ensure these particulars are correct and not misleading but their accuracy is not guaranteed nor do they form part of any contract.