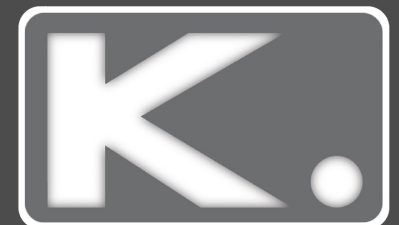
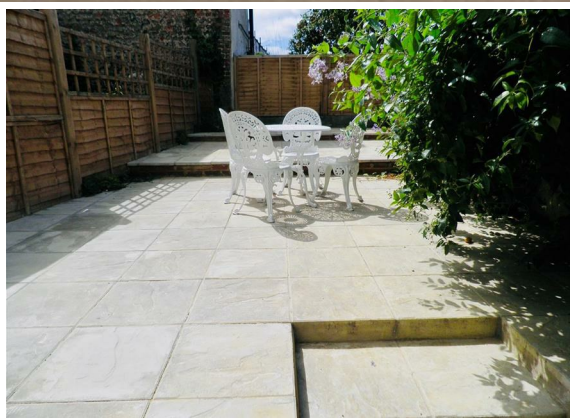




**6 Bed  
House - Terraced  
located in Brighton**

**£550,000**



106 Islingword Road  
Brighton  
East Sussex  
BN2 9SG



6



2



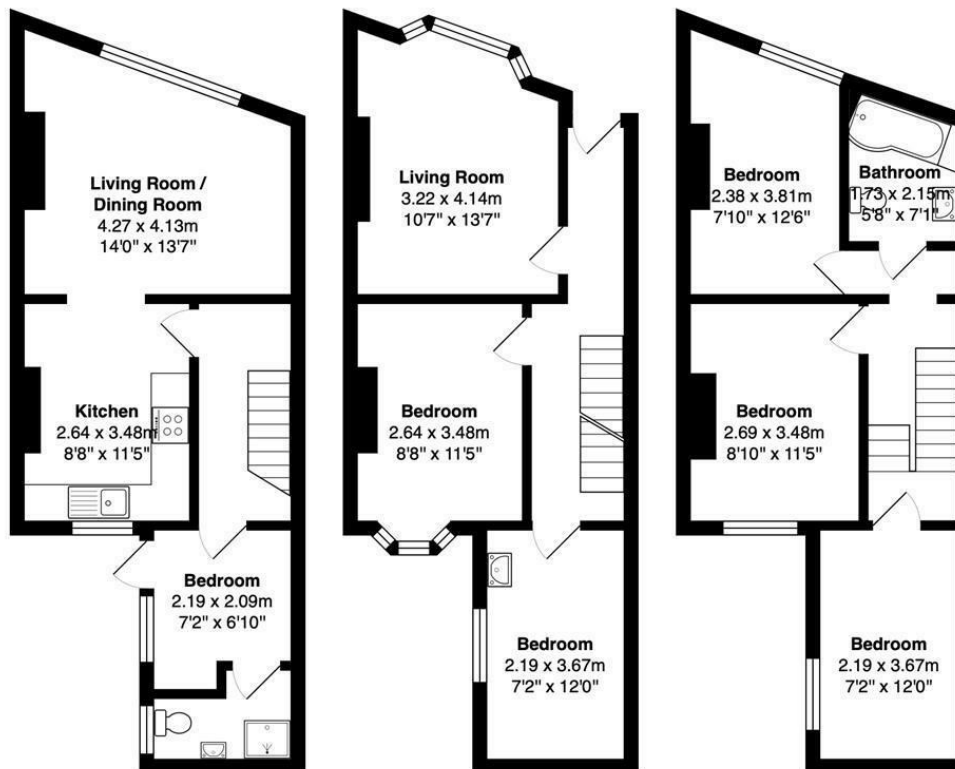
1



E







**Lower Ground Floor**  
 Area: 38.7 m<sup>2</sup> ... 417 ft<sup>2</sup>

**Ground Floor**  
 Area: 39.4 m<sup>2</sup> ... 424 ft<sup>2</sup>

**First Floor**  
 Area: 38.7 m<sup>2</sup> ... 416 ft<sup>2</sup>

Total Area: 116.8 m<sup>2</sup> ... 1257 ft<sup>2</sup>

All measurements are approximate and for display purposes only.

## DIRECTIONS

## CONTACT

Kendrick Property Services - Brighton  
 10-12 Lewes Road  
 Brighton  
 East Sussex  
 BN2 3HP

E:  
[lettings@kendrickpropertyservices.co.uk](mailto:lettings@kendrickpropertyservices.co.uk)  
 T: 01273 699600  
[www.kendrickpropertyservices.co.uk](http://www.kendrickpropertyservices.co.uk)

