

# Bridgwater Road

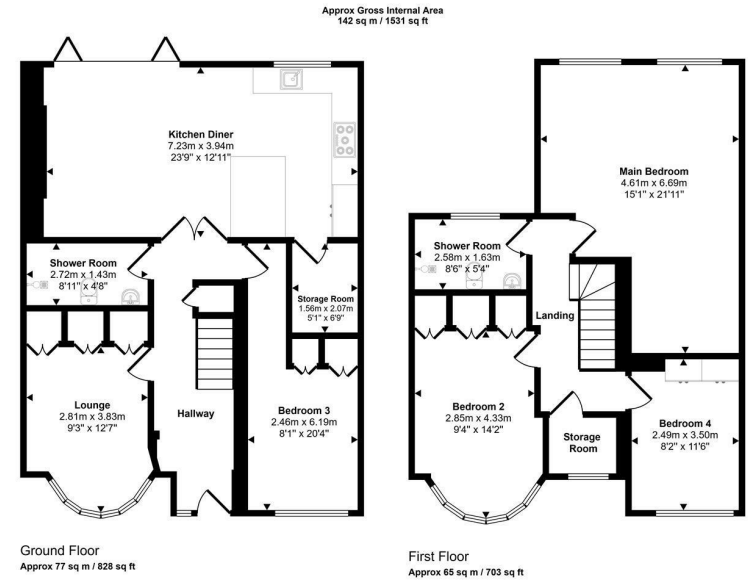
Ruislip • • HA4 0EE  
PCM: £3,300 PCM



coopers  
est 1986



A completed refurbished and generously proportioned four bedroom semi-detached family home situated on the ever-popular Bridgwater Road in Ruislip, offering spacious and versatile accommodation across two floors and conveniently located within close proximity to Ruislip Gardens Station.



This floorplan is only for illustrative purposes and is not to scale. Measurements of rooms, doors, windows, and any items are approximate and no responsibility is taken for any error, omission or mis-statement. Icons of items such as bathroom suites are representations only and may not look like the real items. Made with Made Snappy 360.



Four Bedroom Semi Detached House

Completely Brand New Throughout

Driveway Parking

Private Rear garden With Covered Patio Area

Fitted Wardrobes

Four Double Bedrooms

Two Bathrooms

Moments From Ruislip Gardens Station

Central Line

Local Amenities On Your Doorstep

**Available Date**

23rd May 2026

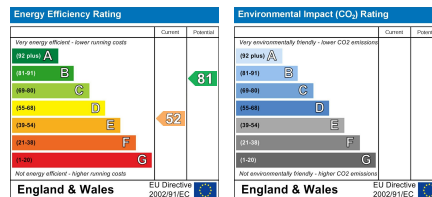
**01895 625 625**

**126-128 High Street, Ruislip,**

**Middlesex, HA4 8LL**

[rl@coopersresidential.co.uk](mailto:rl@coopersresidential.co.uk)

**CoopersResidential.co.uk**



Important Notice: These particulars, whilst believed to be accurate are set out as a general outline only for guidance and do not constitute any part of an offer or contract. Intending purchasers should not rely on them as statements or representation of fact, but must satisfy themselves by inspection or otherwise has the authority to make or give any representation or warranty in respect of the property.

**coopers**  
est 1986