





# The Forgehouse, Blacksmith Croft, Dinnington, S25 2PL

Fixed Price £465,000

🛏 4 🚿 2 🛋 2



## An elegant family home in the heart of heritage.

Introducing **The Forgehouse**—the flagship residence of Blacksmith Croft, an exclusive collection of just eight luxury homes in the heart of Dinnington. Set on the largest plot in the development, this exceptional four-bedroom detached home is the true centrepiece of this historic site.

Crafted in beautiful natural stone with an imposing presence and spacious internal layout, The Forgehouse offers refined family living with room to breathe. From its expansive open-plan spaces to its elegant private garden and driveway, this home is built for those who want something more—more light, more space, and more story.

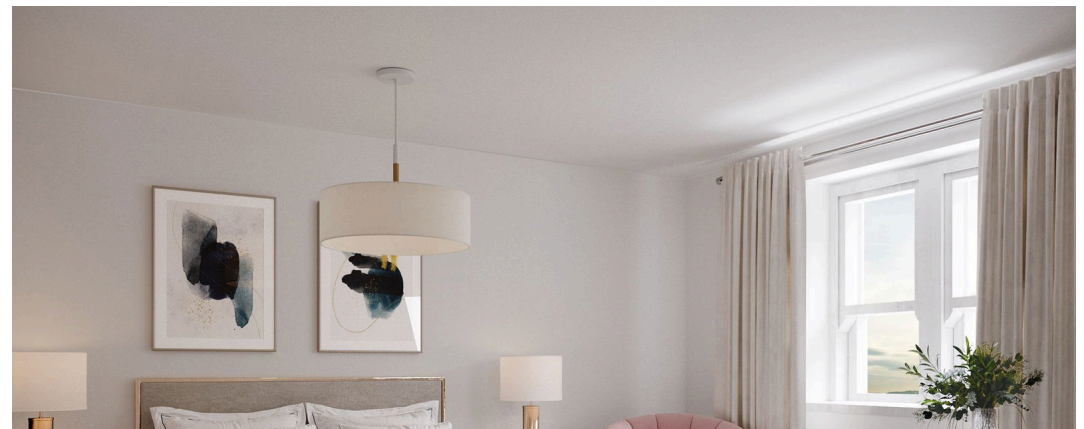
Tailor your home from the inside out with a handpicked selection of kitchens, worktops, tiles, and flooring—all designed to help you create a living space as unique as its setting.

Built on the very ground once home to Billy Hawke's forge, The Forgehouse stands where the village blacksmith once served the community—crafting tools, shoeing horses, and building wheels for the farms around. That same spirit of craftsmanship and purpose is echoed in every detail of this stunning home.

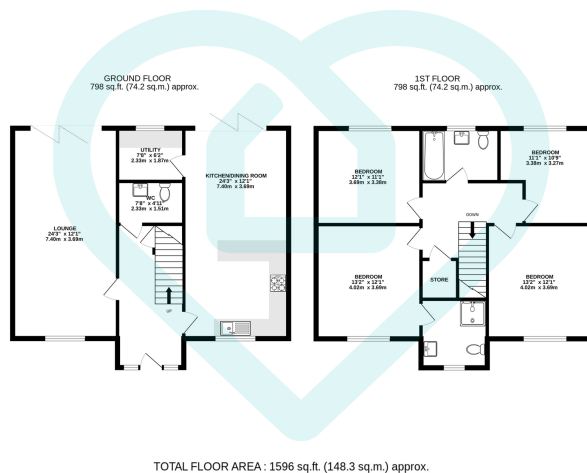
### A Story Worth Living In:

Tucked just off the High Street, opposite the historic St Leonard's Church and beside the Grade II listed Hall Farm, The Forgehouse offers a peaceful and prestigious setting. With local shops, schools, and green spaces just a short walk away—and Sheffield and Rotherham within easy reach via the A57 and M1—this is countryside living without compromise.

This is more than just a new home. It's your chance to be part of something truly special.







This floor plan is for illustrative purposes only. All measurements and layouts are approximations and do not necessarily capture the precise specifications of the property. No responsibility is taken for any error, omission, or misstatement. We always recommend viewing in person to confirm the exact floor plan of a property. Made with Metropix.



- Exclusive four bedroom detached home.
- Select eight-home development
- Traditional stone-built design
- Bespoke kitchen & interior choices
- Spacious family friendly layout
- Private garden and driveway parking
- Historic forge site location
- Great links to M1 & A57
- Near shops, schools and Anston Stones
- 10 year "Protek" New Build warranty

## Sales | Lettings | New Homes

VAT Reg Number: 191 3588 84  
Company Reg Number: 08610489  
Company Reg Address: 67 Middlewood Road, Hillsborough, Sheffield, S6 4GX.

The MorfittSmith Building  
67 Middlewood Road  
Hillsborough  
Sheffield  
S6 4GX

## Get in touch - arrange an appointment



0114 232 1764



sales@morfittsmith.co.uk  
lettings@morfittsmith.co.uk  
newhomes@morfittsmith.co.uk



www.morfittsmith.co.uk



@MorfittSmith



@MorfittSmith



MorfittSmith  
Estate & Letting Agent