



16, Rumsey Close, Copthorne Keep, Shrewsbury, SY3 8FJ
£1,300 Per Month



16, Rumsey Close, Copthorne Keep, Shrewsbury, SY3 8FJ

£1,300 Per Month

VIRTUAL TOUR AVAILABLE - Recently built three bedroom end of terrace house located in this historic location on the site of the former Copthorne Barracks. The Copthorne Keep development is conveniently located just a short walk from Shrewsbury town centre and the Quarry Park. Two allocated parking spaces.

Available: 08/09/26

Description

Comprising: Entrance hall with WC, living room with under-stairs storage, kitchen with integrated fridge freezer, oven, hob and dishwasher. Stairs to first floor landing, two double bedrooms, one with en-suite shower room, further bedroom, bathroom with shower overhead. Rear garden with side access, parking for two cars. Double glazing, Gas Central Heating. EPC B.



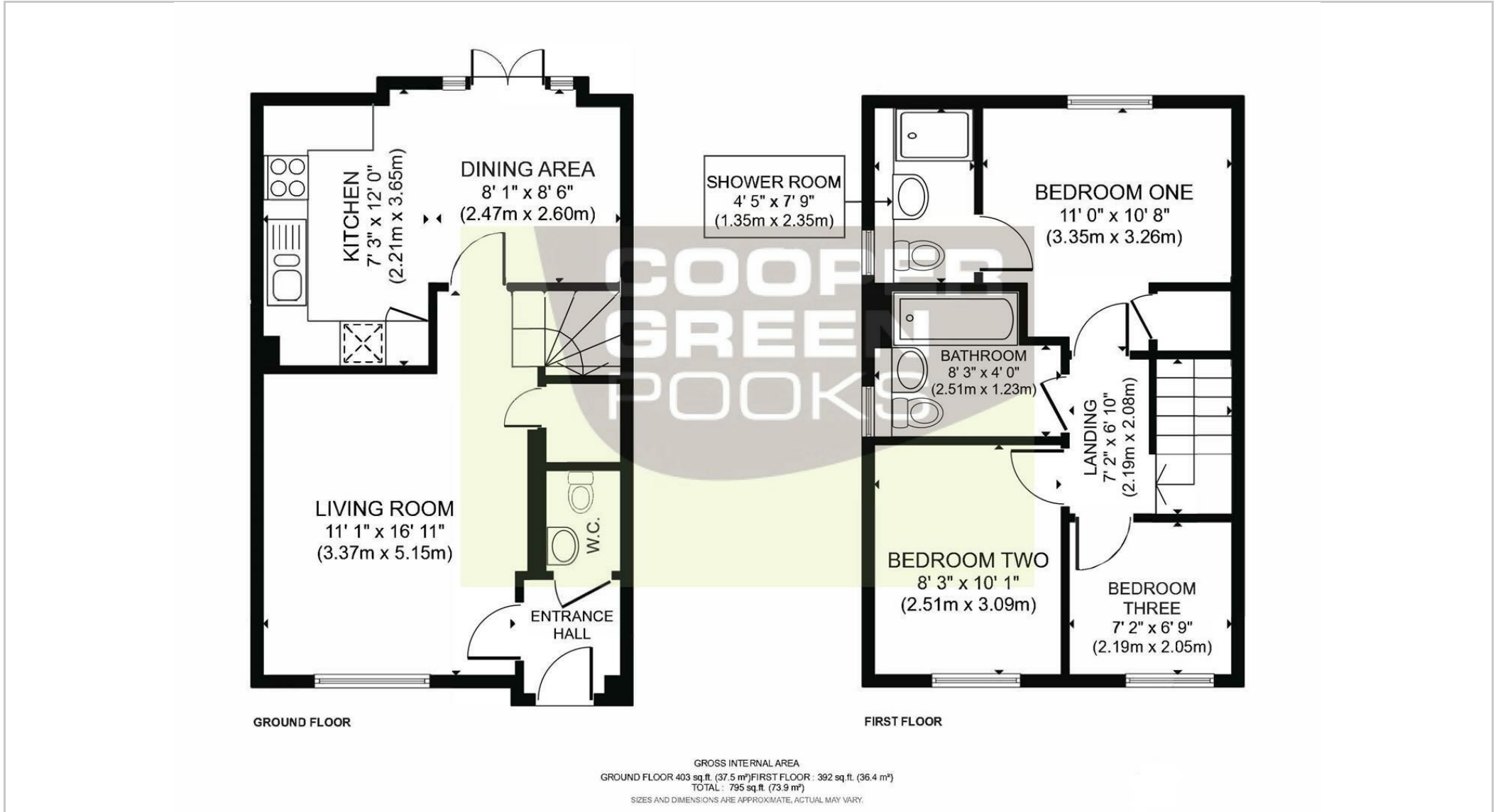
Unfurnished

Council Tax Band: C

Available: 8th September 2026

EPC: B

Floor Plans



These particulars, whilst believed to be accurate are set out as a general outline only for guidance and do not constitute any part of an offer or contract. Intending purchasers should not rely on them as statements of representation of fact, but must satisfy themselves by inspection or otherwise as to their accuracy. No person in this firm's employment has the authority to make or give any representation or warranty in respect of the property.