



*Jordan fishwick*

**DIDSBURY**  
Palatine Mansions



## Palatine Mansions, Didsbury, M20 3ZA

£250,000



### The Property

A stylish duplex apartment presented to a high standard throughout, set in the well regarded Palatine Mansions development, offering easy access to BURTON ROAD, DIDSBURY VILLAGE and METRO STATIONS. The property is positioned over the ground and lower-ground floor and comprises: A spacious entrance hallway, modern fitted kitchen with newly installed boiler, dual aspect living room with large walk-in bay window, to the lower ground floor is a master bedroom with in-built storage, second bedroom and family bathroom with three piece white suite. In addition, there is private residents parking and well tended communal grounds complete the impressive specification.

### Directions

M20 3ZA



- Stylish duplex apartment
- Close to Didsbury Village, Burton Road & Metro station
- Two bedrooms
- Private residents parking
- Newly installed boiler
- Modern bathroom
- Well tended communal grounds
- Bay fronted living room
- Council tax band - C / EPC - D

Postcode - M20 3ZA

EPC Rating - D

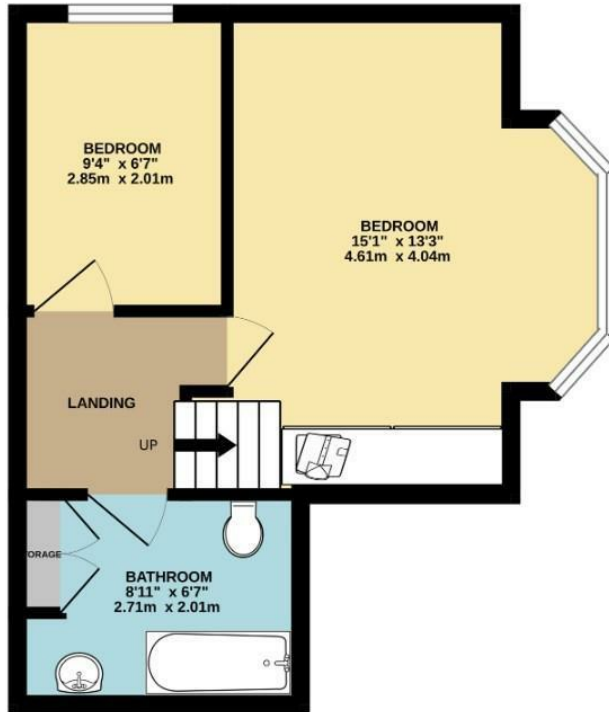
Floor Area - 638.00 sq ft

Local Authority - Manchester City Council

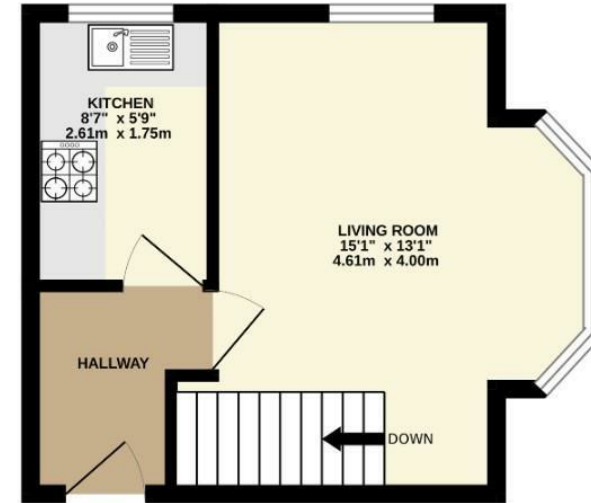
Council Tax - C



BASEMENT  
317 sq.ft. (29.4 sq.m.) approx.



GROUND FLOOR  
245 sq.ft. (22.7 sq.m.) approx.



TOTAL FLOOR AREA : 561 sq.ft. (52.1 sq.m.) approx.  
Measurements are approximate. Not to scale. Illustrative purposes only  
Made with Metropix ©2025



These particulars are believed to be accurate but they are not guaranteed and do not form a contract. Neither Jordan Fishwick nor the vendor or lessor accept any responsibility in respect of these particulars, which are not intended to be statements or representations of fact and any intending purchaser or lessee must satisfy himself by inspection or otherwise as to the correctness of each of the statements contained in these particulars. Any floorplans on this brochure are for illustrative purposes only and are not necessarily to scale.

Offices also at: Wilmslow, Macclesfield, Hale, Sale, Chorlton, Glossop, Manchester & Salford

757-759 Wilmslow Road, Didsbury Village, Manchester

0161 445 4480

didsbury@jordanfishwick.co.uk  
www.jordanfishwick.co.uk