



5a Kenway Road | Earls Court | London | SW5 0RP

£ 2,100 PCM

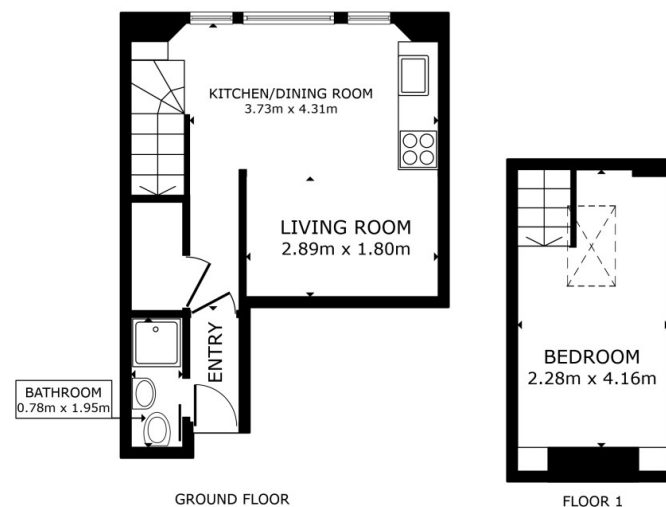
 cityrelay

5a Kenway Road | Earls Court
 London | SW5 ORP
 £ 2,100 PCM

A beautifully arranged and characterful studio apartment set within a charming period building in the heart of Earls Court, just a short three-minute walk from Earls Court Underground Station, offering swift access to the Piccadilly and District Lines.



- Third floor studio apartment
- High ceilings enhancing light and volume
- Bright interior with large sash windows
- Mezzanine bedroom creating defined living space
- Just 3 minutes' walk to Earls Court Station
- Modern fitted kitchen with integrated appliances



GROSS INTERNAL AREA
 GROUND FLOOR 22.3 m² FLOOR 1 9.8 m²
 TOTAL : 32.0 m²
 SIZES AND DIMENSIONS ARE APPROXIMATE, ACTUAL MAY VARY.



Energy Efficiency Rating		Current	Potential
<i>Very energy efficient - lower running costs</i>			
(92 plus)	A		
(81-91)	B		
(69-80)	C		
(55-68)	D	66	81
(39-54)	E		
(21-38)	F		
(1-20)	G		
<i>Not energy efficient - higher running costs</i>			
England & Wales		EU Directive 2002/91/EC	

Council Tax Band A
 EPC Rating D

10 Cromwell Place
 London
 SW7 2JN
 02038 650611
 lettings@cityrelay.com