



## BRONDESURY ROAD, NW6

£550,000

Two Bedrooms  
First Floor Flat  
Separate Kitchen  
South Facing Reception  
Share of Freehold  
Chain-Free

@marshandparsons  
marshandparsons.co.uk

MARSH &  
PARSONS



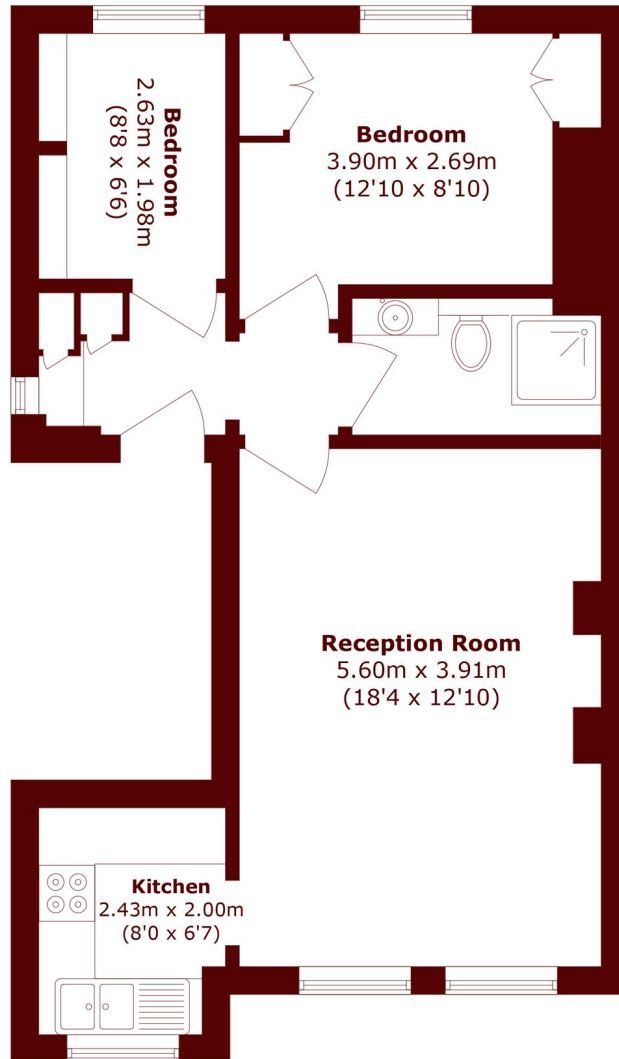
# ABOUT THE PROPERTY

This charming well-presented two bedroom first floor flat in a Victorian building boasts high ceilings and an abundance of natural light. The reception room is south facing with exposed brickwork, there is a separate kitchen, a modern bathroom, and the property is available chain-free.

Brondesbury Road is set on a tree-lined residential street with access to the cafes, bars and restaurants, and amenities on Salusbury Road and the green open spaces of Queen's Park close by. Transport links include Queen's Park (Bakerloo) and Kilburn High Road (Overground).



# STEP INSIDE BRONDESBURY ROAD



Total area (approx.): 52.9 sq. m (569.4 sq. ft)

Queen's Park  
020 7624 4513

Energy Rating: C We aim to make our particulars both accurate and reliable. However, they are not guaranteed; nor do they form part of an offer or contract. If you require clarification on any points then please contact us, especially if you're traveling some distance to view. Please note that appliances and heating systems have not been tested and therefore no warranties can be given as to their good working order

MARSH &  
PARSONS