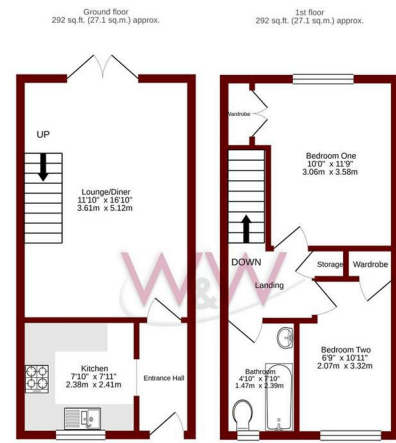




John Bunyan Close | | Whiteley | PO15 7LE

£1,225 PCM





TOTAL FLOOR AREA: 584 sq ft (54.2 sq.m.) approx.

While every attempt has been made to ensure the accuracy of the floorplan, it is not intended to be a legal document. It is for information only and should not be relied upon for legal purposes. The actual floor area may vary slightly from the figures shown. The floorplan is not to scale.

Energy Efficiency Rating		
	Current	Potential
Very energy efficient - lower running costs		
(92 plus) A		87
(81-91) B		
(69-80) C	72	
(55-68) D		
(39-54) E		
(21-38) F		
(1-20) G		
Not energy efficient - higher running costs		
England & Wales	EU Directive 2002/91/EC	



Description

W&W are delighted to offer for let this two bedroom terraced house. The property boasts two bedrooms, fitted kitchen, lounge/dining room & family bathroom. The property also benefits from a southerly facing rear garden and allocated parking. Available January 2026

Key features

- Two Bedroom Mid Terrace House
- Kitchen
- Enclosed Rear Garden with pedestrian rear access
- Lounge Diner
- Family bathroom
- Allocated Parking



H3 Whiteley Shopping Centre
 Whiteley Way
 Whiteley
 Hants
 PO15 7PD
 01489 580800
 pm@walkerwaterer.co.uk
 www.walkerwaterer.co.uk