



Connells

Rounds Road
Coseley Bilston



Property Description

Connells Wolverhampton are delighted to bring to the market this large and spacious CHAIN FREE three bedroom detached bungalow in a popular residential location. Benefiting from an abundance of internal and external space, this property is large than average and should be viewed in order to fully appreciate.

The property comprises of entrance hall, lounge, dining room, kitchen, three bedrooms and modern shower room. Externally there is a large driveway to front and side and garage. To the rear is a large enclosed rear garden.

The Location & Area

Situated in Coseley offering fantastic commuting access to the Birmingham New Road which links to Wolverhampton, Dudley and Birmingham.

Entrance Hall

Door to front, doors to various rooms.

Lounge

Double glazed window to front, central heating radiator, door to entrance hall.

Dining Room

Double glazed window to side, door to kitchen, door to entrance hall.



Kitchen

A range of wall and base units, double glazed window to rear, space for various appliances, double glazed door to rear garden, door to dining room.

Bedroom One

Double glazed window to front, central heating radiator, door to entrance hall.

Bedroom Two

Double glazed door to rear garden, door to entrance hall.

Bedroom Three

Double glazed window to side, central heating radiator, door to entrance hall.

Shower Room

Double glazed window to rear, shower cubicle with electric shower, pedestal sink, low flush toilet, door to entrance hall.

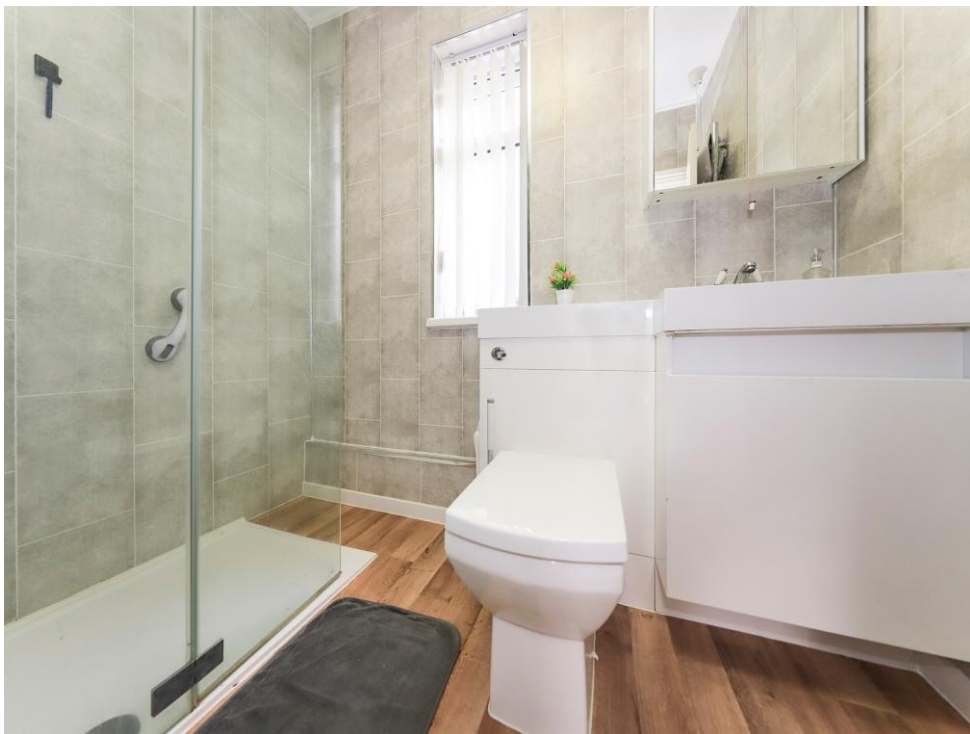
Outside Front

Large block paved driveway with paved steps, driveway to side leading to garage/workshop.

Outside Rear

Large lawned rear garden, a range of outbuildings.









This floor plan is for illustrative purposes only. It is not drawn to scale. Any measurements, floor areas (including any total floor area), openings and orientation are approximate. No details are guaranteed, they cannot be relied upon for any purpose and they do not form part of any agreement. No liability is taken for any error, omission or misstatement. A party must rely upon its own inspection(s). Powered by www.focalagent.com

To view this property please contact Connells on

T 01902 710 170
E wolverhampton@connells.co.uk

81-83 Darlington Street
 WOLVERHAMPTON WV1 4EX

EPC Rating: E Council Tax
 Band: C

Tenure: Freehold

view this property online connells.co.uk/Property/WVH332849



1. MONEY LAUNDERING REGULATIONS Intending purchasers will be asked to produce identification documentation at a later stage and we would ask for your co-operation in order that there will be no delay in agreeing the sale. 2. These particulars do not constitute part or all of an offer or contract. 3. The measurements indicated are supplied for guidance only and as such must be considered incorrect. Potential buyers are advised to recheck measurements before committing to any expense. 4. We have not tested any apparatus, equipment, fixtures, fittings or services and it is in the buyers interest to check the working condition of any appliances.

Connells Residential is registered in England and Wales under company number 1489613, Registered Office is Cumbria House, 16-20 Hockliffe Street, Leighton Buzzard, Bedfordshire, LU7 1GN. VAT Registration Number is 500 2481 05.

See all our properties at www.connells.co.uk | www.rightmove.co.uk | www.zoopla.co.uk

Property Ref: WVH332849 - 0005