

whiteley helyar



455 ft²



studio room



bathroom



*resident's
parking
permit*

Guide Price £225,000

Flat 9, 8 Portland Place, Bath, BA1 2RU

A lovely studio apartment, with separate kitchen/breakfast room, located just to the north of the city centre. On the top floor of a Grade 2* listed Georgian townhouse, the flat offers panoramic southerly views and nicely proportioned accommodation.

ACCOMMODATION

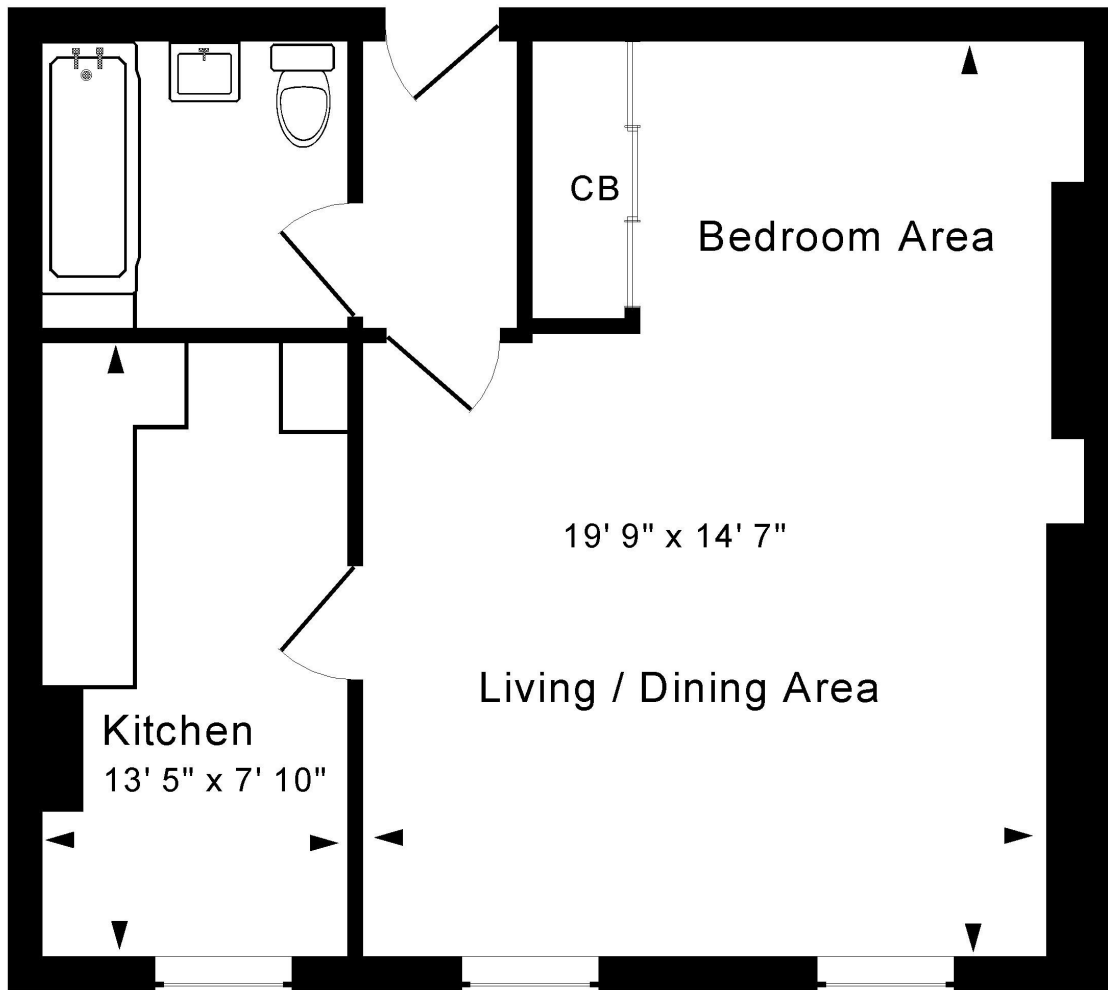
Entrance hall
Open-plan living/dining/bedroom with stunning southerly views
Kitchen/breakfast room with those fabulous views and period fireplace
Modern bathroom

LOCATION

The apartment is well positioned on the lower northern slopes of Bath and just a short walk from Royal Crescent and the Royal Victoria Park (with its Botanical Gardens, extensive children's play areas, café, tennis courts and golf). The shops, galleries and restaurants in Margaret's Buildings and Brock Street are very close by, whilst the numerous amenities in the very centre of Bath are within a quick stroll. Easy access to Junction 18 of the M4 is also available without having to cross the city.







Approx. Gross Internal Floor Area 455 Sq. Ft. / 42 Sq. M
 Includes Conservatories. Excludes Garages, Porches etc. unless stated
 For identification purposes only. Not to scale. Copyright Jemesis Ltd 2026
 Drawing Number:172-0887
 Flat 9, 8 Portland Place, Bath, BA1 2RU.



Tenure: Share of freehold
Service charge: £2689.89 pa
Council Tax Band: 'B' - £1,808.54