

LEASEHOLD



House - Terraced

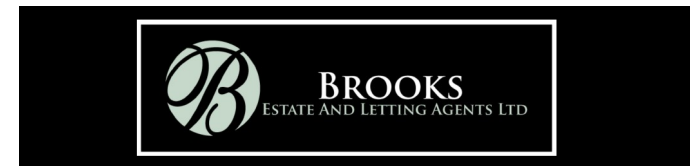
# 59 GILBERT ROAD, WHISTON, PRESCOT, L35 5AG

Asking Price

# £130,000

## FEATURES

- Two bedroom mid terraced property in a sought after location
- Lounge with feature fireplace and dining room
- An early viewing is advised
- Offered with no onward chain
- Situated close to Whiston Hospital, shops, schools and transport links
- Fitted kitchen and modern shower room
- Garden at the rear and driveway for off road parking



**BROOKS**  
ESTATE AND LETTING AGENTS LTD

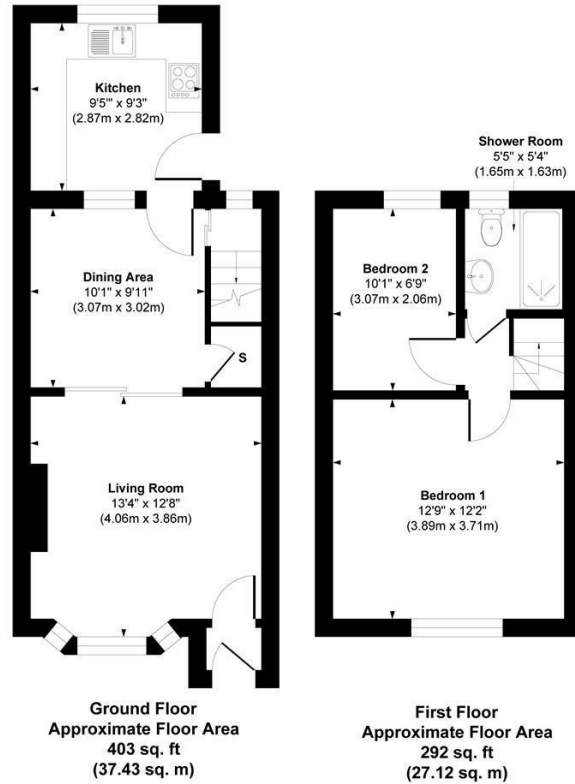
# 2 Bedroom House - Terraced located in Prescot

This well-presented two-bedroom mid-terraced property is ideally located within walking distance of Whiston Hospital, local shops, reputable schools, and excellent transport links, making it a convenient choice for a range of buyers.

The accommodation briefly comprises a welcoming lounge with feature fireplace, a separate dining room, a fitted kitchen, and a modern shower room complete with a contemporary three-piece suite.

Externally, the property benefits from a pleasant rear garden with established shrub displays, providing a lovely outdoor space, while to the front there is a driveway offering off-road parking.

This property would make an ideal first-time purchase or a perfect option for those looking to downsize, and is situated in a highly sought-after residential location. Offering excellent potential, the home is ready for a new owner to add their own personal touch.



**Approx. Gross Internal Area 695 sq. ft / 64.55 sq. meters**

Whilst every attempt has been made to ensure the accuracy of the floorplan shown, all measurements, positioning fixtures fittings and any other data shown are an approximate interpretation for illustrative purposes only and are not to scale. No responsibility is taken for any errors, omission, miss-statement or use of data show.

Call us on

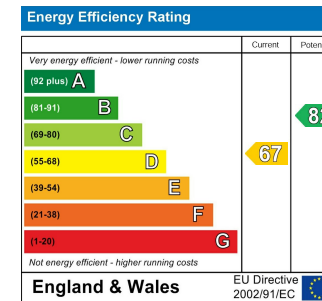
**0151 329 3313**

[prescot@brooksestateandlettings.co.uk](mailto:prescot@brooksestateandlettings.co.uk)

[www.brooksestateandlettings.co.uk](http://www.brooksestateandlettings.co.uk)

**Council Tax Band**

**B**



Agents Note: Whilst every care has been taken to prepare these particulars, they are for guidance purposes only. All measurements are approximate and are for general guidance purposes only and whilst every care has been taken to ensure their accuracy, they should not be relied upon and potential buyers are advised to recheck the measurements.

