



Alexandra Park Road, N22

£750,000

Close to the famous Alexandra Park and Palace, this first floor three bedroom flat retains original period details throughout and has access to a south facing garden. Benefitting from large windows and high ceilings, it is a bright and spacious flat with a generous principal bedroom and family bathroom.

Offering a brilliant location catchment for outstanding local schools, the property benefits from being 0.5 mile from Alexandra Palace Station with connections to the City (Moorgate and Old Street), and situated well for local bus routes into Muswell Hill Broadway.

Features

- Three Bedrooms
- First Floor Flat
- Period Features
- South Facing Garden
- Potential for Loft Conversion
- Outstanding School Catchment

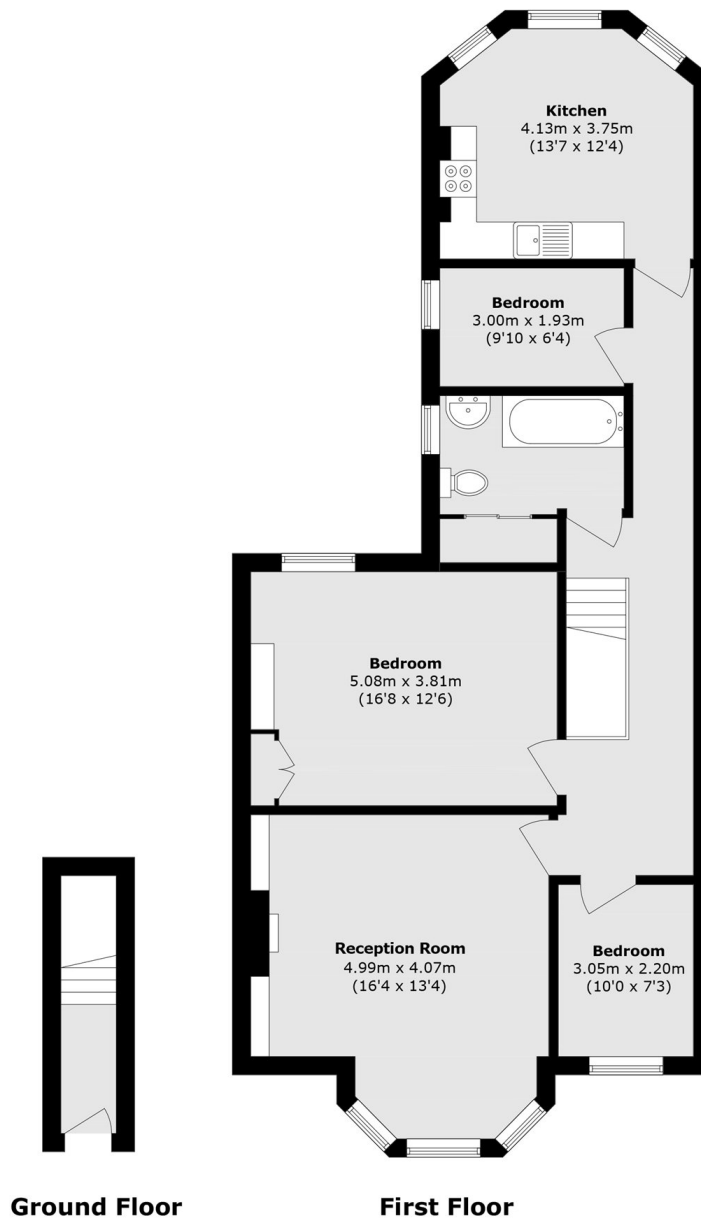


Alexandra Park Road, N22

Complete with an already generous space, this charming flat provides the opportunity for a loft conversion (STPP) and potential for expansion, making it an ideal choice for growing families.



Alexandra Park Road, London, N22



Total area (approx.): 101.5 sq. m (1092.5 sq. ft)