



CORNWELL BUILDINGS

JIM LAWRENCE

COASTAL & MARINE

THE TRIPLEX

114 Walcot street



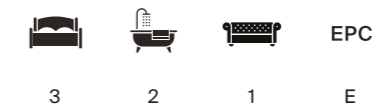
A BEAUTIFULLY RESTORED TOWNHOUSE IN THE CITY WITH ROOF TERRACE VIEWS OF THE COUNTRYSIDE

Ground Floor | Hallway, Under stairs storage

First Floor | Kitchen, Living/Dining Room, Outside Roof Terrace

Second Floor | Main Bedroom, En suite

Third Floor | 2 Double Bedrooms, Bathroom



Services: Mains water, electricity, gas and drainage are connected to the property.

Local Authority: Bath and North East Somerset

Council Tax: Band C

Tenure: Leasehold - 999 year lease from July 2023

Service Charge £3,660 per annum

Viewing: Strictly by prior appointment with the agent.

Postcode: BA1 5BG



THE HOUSE

Number 114 is one of a pair of symmetrical Grade II listed Georgian townhouses whose entrances are either side of an unusual curved shop front. Each of these four-storey elegant properties has a single tripartite window to each floor per house; number 114 is on the right.

Inside, a long hallway extends to the rear where there's under stairs storage and stairs up to the first floor. It's immediately obvious that this historical property has been carefully restored and refurbished to enhance its architectural details with modern fittings to create a comfortable home. For example, the wooden panelling featured through the hallway/stairways has built-in and subtle strip lighting under its dado rails; spotlights feature in all of the rooms' ceilings, low-level column radiators fit discreetly under carefully restored windows and superior bathroom fittings and fixtures complement this home's quality aesthetic.

On the first floor, there's a light and airy galley kitchen with brand new pale grey/white marbled worktops, blue units, ceramic sink and Neff appliances. A floor-to-ceiling glass window (that is actually a door) opens onto a wooden-decked and enclosed roof terrace with views across rooftops and to the hills beyond. Adjacent to the Kitchen is the Living/Dining Room - a large, square space that's ample enough for its multiple uses - and features a period fireplace and floor-to-ceiling windows with shutters.

On the second floor, there's a generous main bedroom with fitted wardrobes and fireplace, which leads to a bright and light en suite with a glass-panelled shower and a curved, freestanding bath by the window (you can bathe while enjoying glorious countryside views!)

The third floor has two good-sized bedrooms, both with wooden beams and fireplaces. The bathroom on this floor has a skylight in its high ceiling, allowing natural illumination of its modern fittings and glass panelled shower.

SITUATION

Walcot is known locally as the artisan quarter, with many independent businesses, vintage boutiques, cafes and restaurants in the neighbourhood. This property is situated towards the eastern end of Walcot Street just a few minutes walk to the city centre and approximately 15 minutes walk to the main railway and bus station. Bath Spa has direct mainline train links to London Paddington (90 minutes) and the M4 (junction 18) is 9 miles north. Bath is a world heritage city and a popular tourist location. It has a wide range of excellent local schools and the University of Bath has an international reputation for its high standards and Olympic training facilities.

Local Train Station | Bath Spa 1.5 miles

Local Town Centre | Bath 0.3 miles

Nearest City | Bristol 15 miles

M4 (Junction 18) | 9 miles



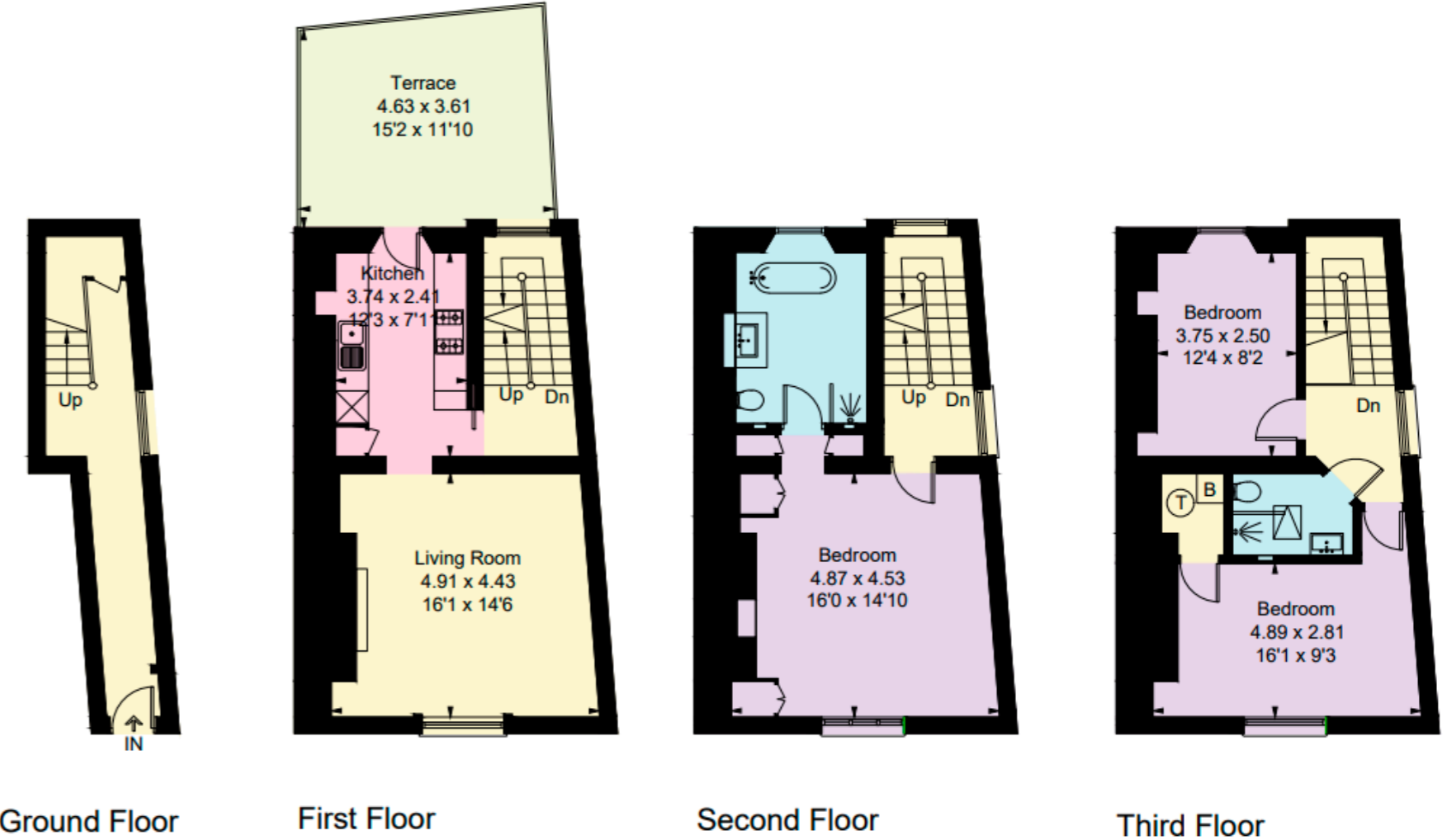


OUTSIDE

There's a generous roof terrace (accessed from the Kitchen) with views across the rooftops to the countryside beyond.

DIRECTIONS

Head west on Queen Square towards Princes Street, following the A4 around the square to the right. Turn left onto Gay Street and follow the road around right onto George Street. Continue along the A4 until you reach a roundabout, take the second exit onto London Street/Walcot Street. The Triplex is at 114 Walcot Street (Above the Jim Lawrence shop, grey door to the right).



Approximate Gross Internal Area = 128.6 sq m / 1,384 sq ft

This plan is for layout guidance only. Not drawn to scale unless stated. Windows and door openings are approximate. Whilst every care is taken in the preparation of this plan, please check all dimensions, shapes and compass bearings before making any decisions reliant upon them.

We would be delighted
to tell you more.

Sam Daniels
01225 325 992
sam.daniels@knightfrank.com

Knight Frank Bath
4 Wood Street, Queen Square
Bath, BA1 2JQ

[knightfrank.co.uk](https://www.knightfrank.co.uk)

Your partners in property

1. Particulars: These particulars are not an offer or contract, nor part of one. You should not rely on statements given by Knight Frank in the particulars, by word of mouth or in writing ("information") as being factually accurate about the property, its condition or its value. Neither Knight Frank nor any joint agent has any authority to make any representations about the property, and accordingly any information given is entirely without responsibility on the part of Knight Frank. 2. Material Information: Please note that the material information is provided to Knight Frank by third parties and is provided here as a guide only. While Knight Frank has taken steps to verify this information, we advise you to confirm the details of any such material information prior to any offer being submitted. If we are informed of changes to this information by the seller or another third party, we will use reasonable endeavours to update this as soon as practical. 3. Photos, Videos etc: The photographs, property videos and virtual viewings etc. show only certain parts of the property as they appeared at the time they were taken. Areas, measurements and distances given are approximate only. 4. Regulations etc: Any reference to alterations to, or use of, any part of the property does not mean that any necessary planning, building regulations or other consent has been obtained. A buyer must find out by inspection or in other ways that these matters have been properly dealt with and that all information is correct. 5. Fixtures and fittings: A list of the fitted carpets, curtains, light fittings and other items fixed to the property which are included in the sale (or may be available by separate negotiation) will be provided by the Seller's Solicitors. 6. VAT: The VAT position relating to the property may change without notice. 7. To find out how we process Personal Data, please refer to our Group Privacy Statement and other notices at <https://www.knightfrank.com/legals/privacy-statement>.

Particulars dated December 2025. Photographs and videos dated December 2025. All information is correct at the time of going to print. Knight Frank is the trading name of Knight Frank LLP. Knight Frank LLP is a limited liability partnership registered in England and Wales with registered number OC305934. Our registered office is at 55 Baker Street, London W1U 8AN. We use the term 'partner' to refer to a member of Knight Frank LLP, or an employee or consultant. A list of members names of Knight Frank LLP may be inspected at our registered office. If you do not want us to contact you further about our services then please contact us by either calling 020 3544 0692, email to marketing.help@knightfrank.com or post to our UK Residential Marketing Manager at our registered office (above) providing your name and address.