



## Review Road, NW2

### £700,000

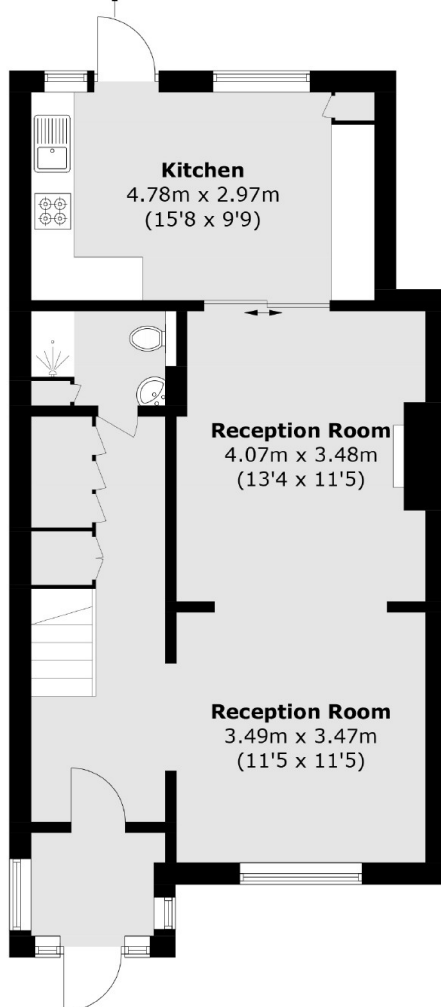
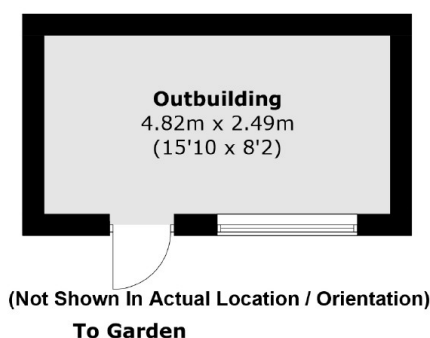
This mid-terraced house makes an ideal family home, with four bedrooms, two bathrooms, a double reception, and a separate kitchen that leads on to the garden. The property comes with a useful outbuilding, off-street parking, and no onward chain.

Review Road is a short distance from the new Brent Cross West station (Thameslink) as well as the variety of shops available at Brent Cross Shopping Centre.

### Features

- Four Bedrooms
- Two Bathrooms
- No Onward Chain
- Driveway
- Terraced House
- Extended into Loft

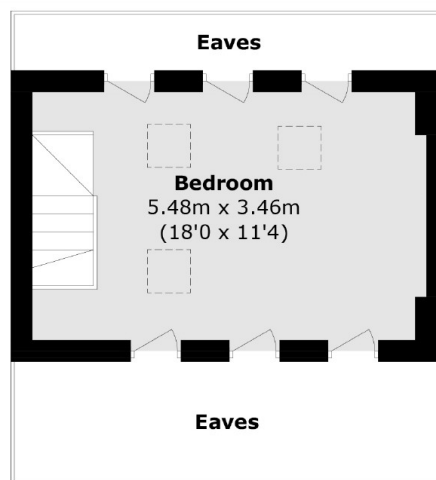
# Review Road, London, NW2



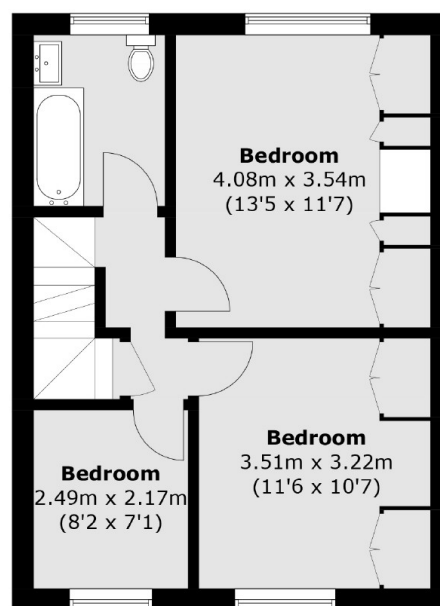
## Ground Floor

Approx Internal Area: 121.0 sq. m (1,302.4 sq. ft)  
(Excluding Eaves)

Outbuilding: 12.1 sq. m (130.2 sq. ft)



## Second Floor



## First Floor

# Dexters

Cricklewood  
28-30 Cricklewood Broadway  
London  
NW2 3HD  
Sales  
020 7794 7710

Energy Rating: D. We aim to make our particulars both accurate and reliable. However they are not guaranteed; nor do they form part of an offer or contract. If you require clarification on any points then please contact us, especially if you're traveling some distance to view. Please note that appliances and heating systems have not been tested and therefore no warranties can be given as to their good working order.

 **RICS** | Regulated  
Estate Agent  
and Letting Agent

dexters.co.uk