



Ely Road, Prickwillow, CB7 4UJ

Rent - £1,200 Per Month Deposit - £1,384

Set within the quiet village of Prickwillow, this three bedroom semi-detached home offers spacious accommodation in a rural setting, while remaining well placed for access to Ely and within approximately 25 minutes' drive of RAF Mildenhall and RAF Lakenheath. The property includes a lounge with feature fireplace, a fitted kitchen with selected appliances, three bedrooms and a family bathroom.

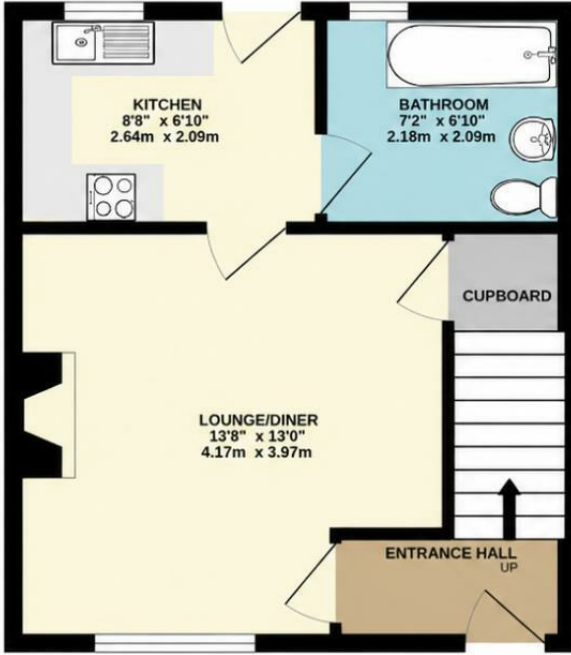
Outside, the property benefits from a shared driveway providing off-road parking for two to three vehicles, along with a rear garden and useful shed. Further benefits include oil central heating, charming village surroundings and availability from late April.

- THREE BEDROOM SEMI-DETACHED HOME
- NEARBY TO RAF BASES
- KITCHEN WITH SELECTED APPLIANCES
- OFF-ROAD PARKING FOR 3 VEHICLES
- EPC RATING - D
- QUIET RURAL VILLAGE LOCATION
- LOUNGE WITH FEATURE FIREPLACE
- OIL CENTRAL HEATING
- COUNCIL TAX BAND - A
- EARLY VIEWING ADVISED

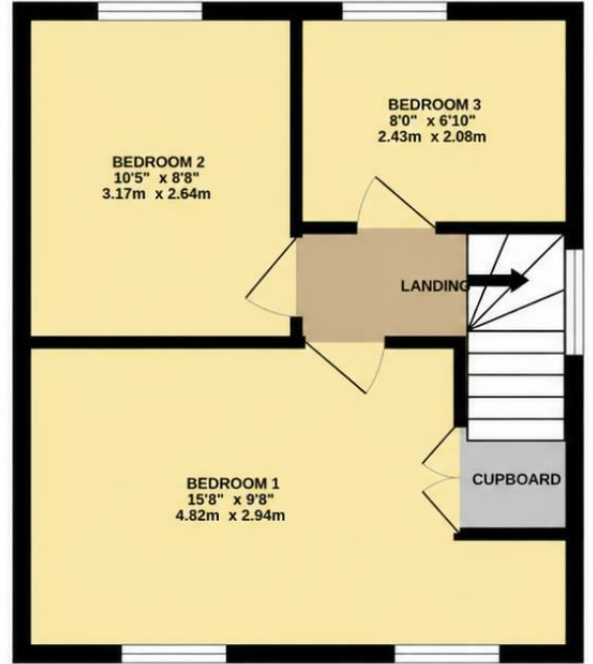


Council Tax Band: A - EPC Rating: D 67

GROUND FLOOR
339 sq.ft. (31.5 sq.m.) approx.



1ST FLOOR
352 sq.ft. (32.7 sq.m.) approx.



TOTAL FLOOR AREA : 691 sq.ft. (64.2 sq.m.) approx.

Whilst every attempt has been made to ensure the accuracy of the floorplan contained here, measurements of doors, windows, rooms and any other items are approximate and no responsibility is taken for any error, omission or mis-statement. This plan is for illustrative purposes only and should be used as such by any prospective purchaser. The services, systems and appliances shown have not been tested and no guarantee as to their operability or efficiency can be given.
Made with Metropix ©2023

