



Wellington Walk | | Stockton-On-Tees | TS18 1BL

£625 Per month



Wellington Walk | Stockton-On-Tees | TS18 1BL £625 Per month

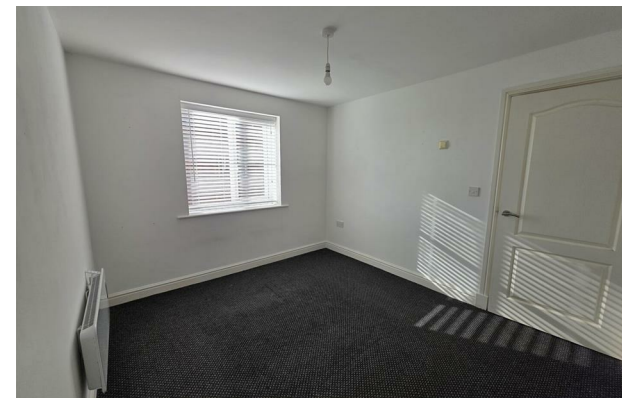
Set within the popular Wellington Walk development, this well-laid-out two-bedroom apartment offers generous proportions and a straightforward, easy-to-live-in layout.

At the heart of the property is a spacious open-plan living and dining area, with large doors providing plenty of natural light and an open outlook. The adjoining kitchen is neatly configured in a U-shape, giving a good amount of storage and preparation space while keeping everything within easy reach.

The apartment includes two bedrooms, both comfortably sized and suitable for a range of uses, whether as sleeping space, a home office or additional storage. The bathroom is fitted with a full suite including a bath with overhead shower, finished in simple, neutral tones.

Additional features include electric heating, double glazing and a practical internal layout that makes the

- Two-bedroom upper floor apartment
- Two good-sized bedrooms
- Short distance to Stockton town centre and shopping facilities
- Spacious open-plan living and dining area
- On-site parking available
- Zero deposit option available



Energy Efficiency Rating		Current	Potential
<i>Very energy efficient - lower running costs</i>			
(92 plus) A			
(81-91) B		84	
(69-80) C			
(55-68) D			
(39-54) E			
(21-38) F			
(1-20) G			
<i>Not energy efficient - higher running costs</i>			
England & Wales		EU Directive 2002/91/EC	

Council Tax Band A
EPC Rating B

St Bede Chambers Albert Road
Jarrow
NE32 5RR
0191 694 1104
general@everstone-property.com