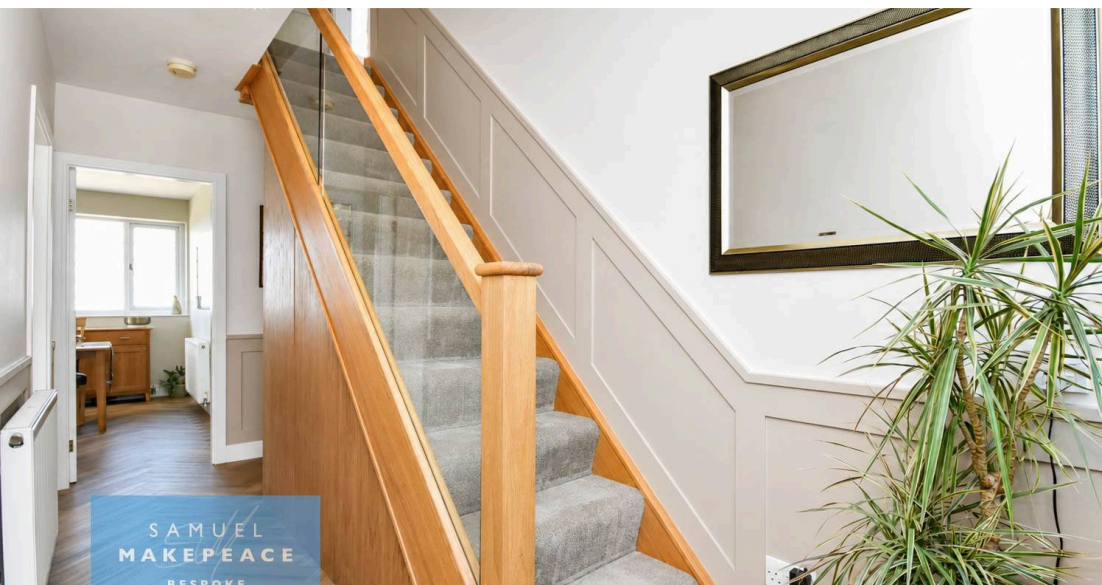
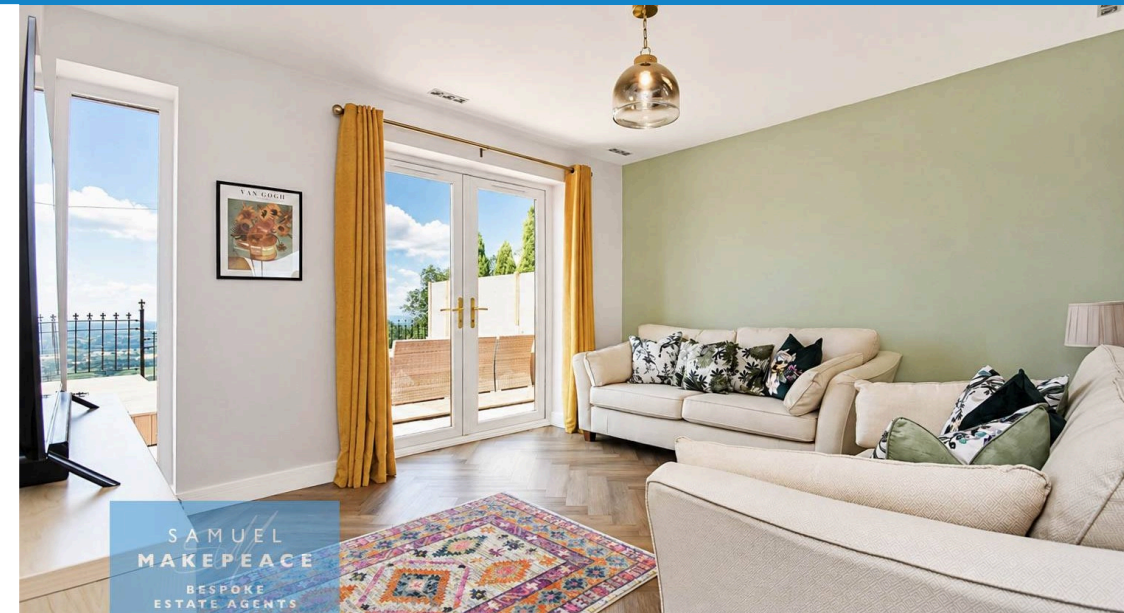




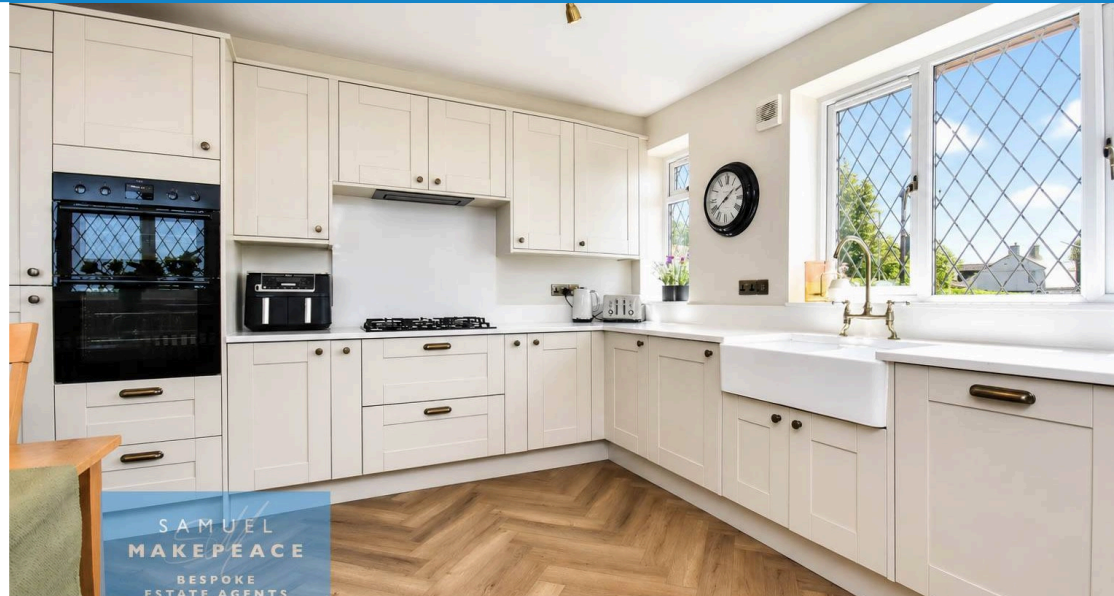
 **3**  
Bedrooms

 **1**  
Bathroom

 **2**  
Receptions



- STUNNING DETACHED DORMA BUNGALOW WITH GARAGE
- JAW DROPPING VIEWS
- GLORIOUS BESPOKE KITCHEN DINER with HIGH END FINISHES
- LOUNGE WITH PATIO DOORS TO THE VIEWS
- THREE DOUBLE BEDROOMS
- OUT OF THIS WORLD BATHROOM
- CONTINUOUS FLOW HERRINGBONE FLOORING THROUGHOUT GROUND FLOOR
- CLOAKROOM WC
- DRIVEWAY FOR MULTI & LOW MAINTENANCE OUTDOORS



I feel like i'm on top of the world! That is exactly how you will feel with one look at this insanely beautiful abode. Perched in an enviable position with far-reaching views and a finish that would not look out of place in a glossy interiors magazine, this exceptional three-bedroom detached home is a genuine showstopper. Beautifully presented throughout and thoughtfully remodelled, it combines stylish contemporary living with superb practicality, generous outside space and a setting that is quite simply hard to beat.

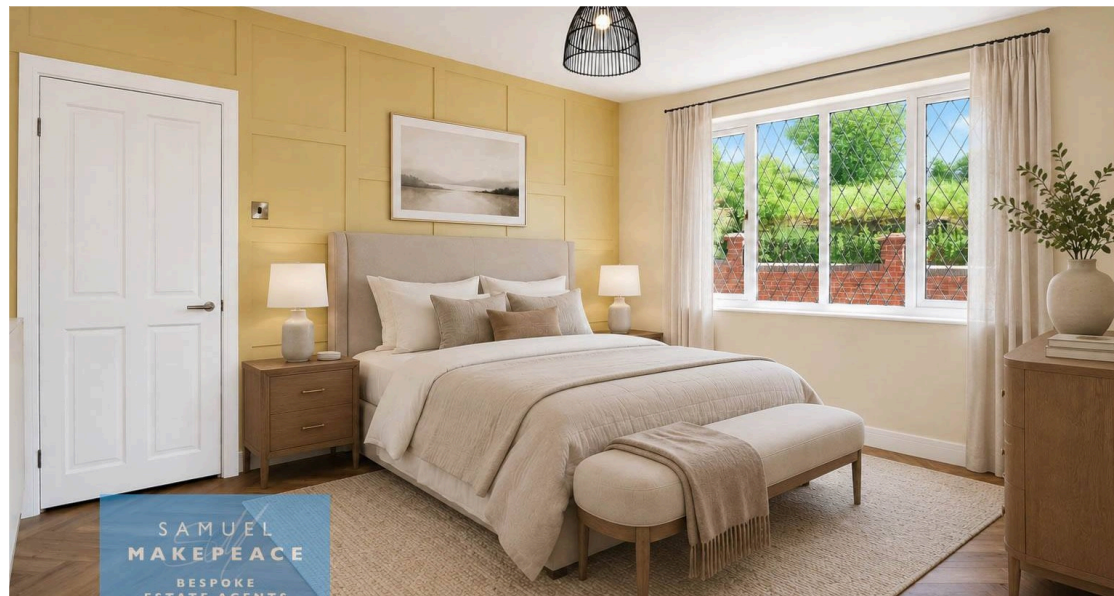
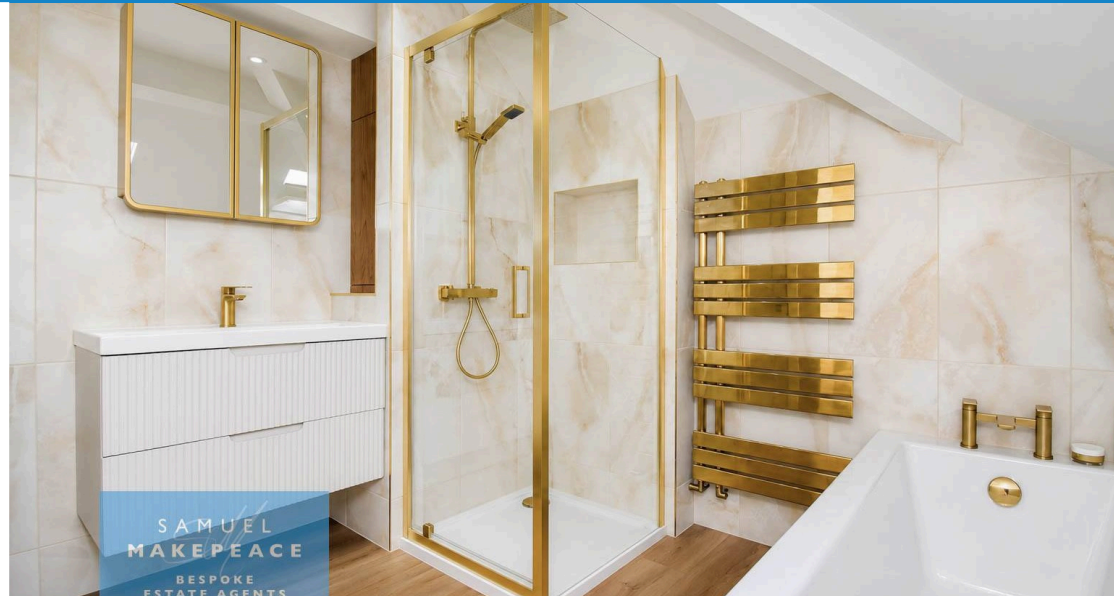
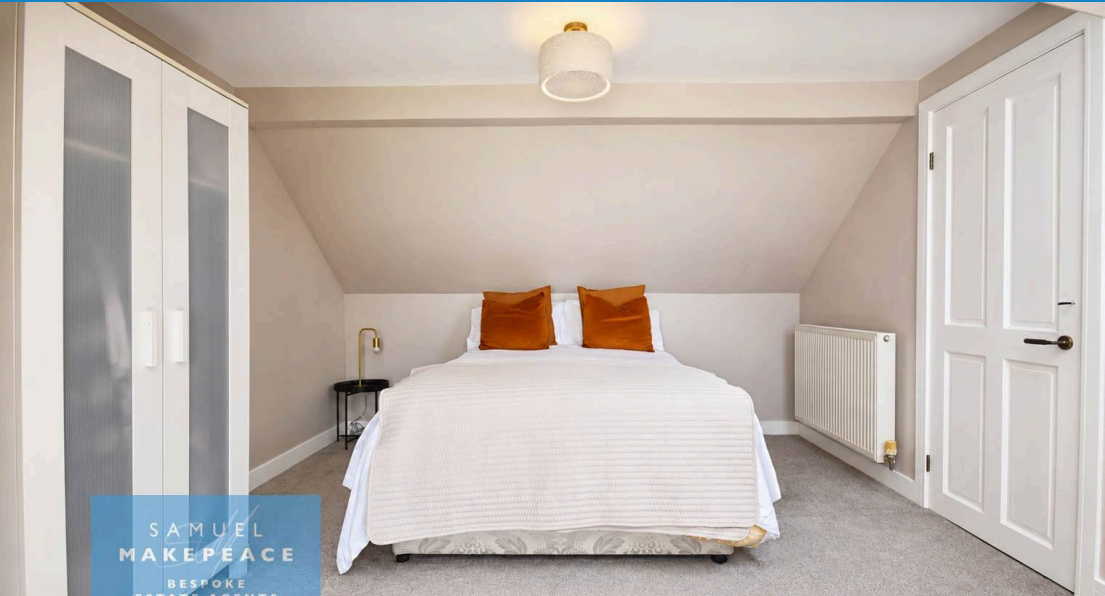
Choose your favourite view! Will it be the unrivalled and unspoilt view of Mow Cop Castle, which is just on your doorstep, or will it be the jaw dropping views of the the Cheshire plains, Welsh mountains, Lancashire and Merseyside?

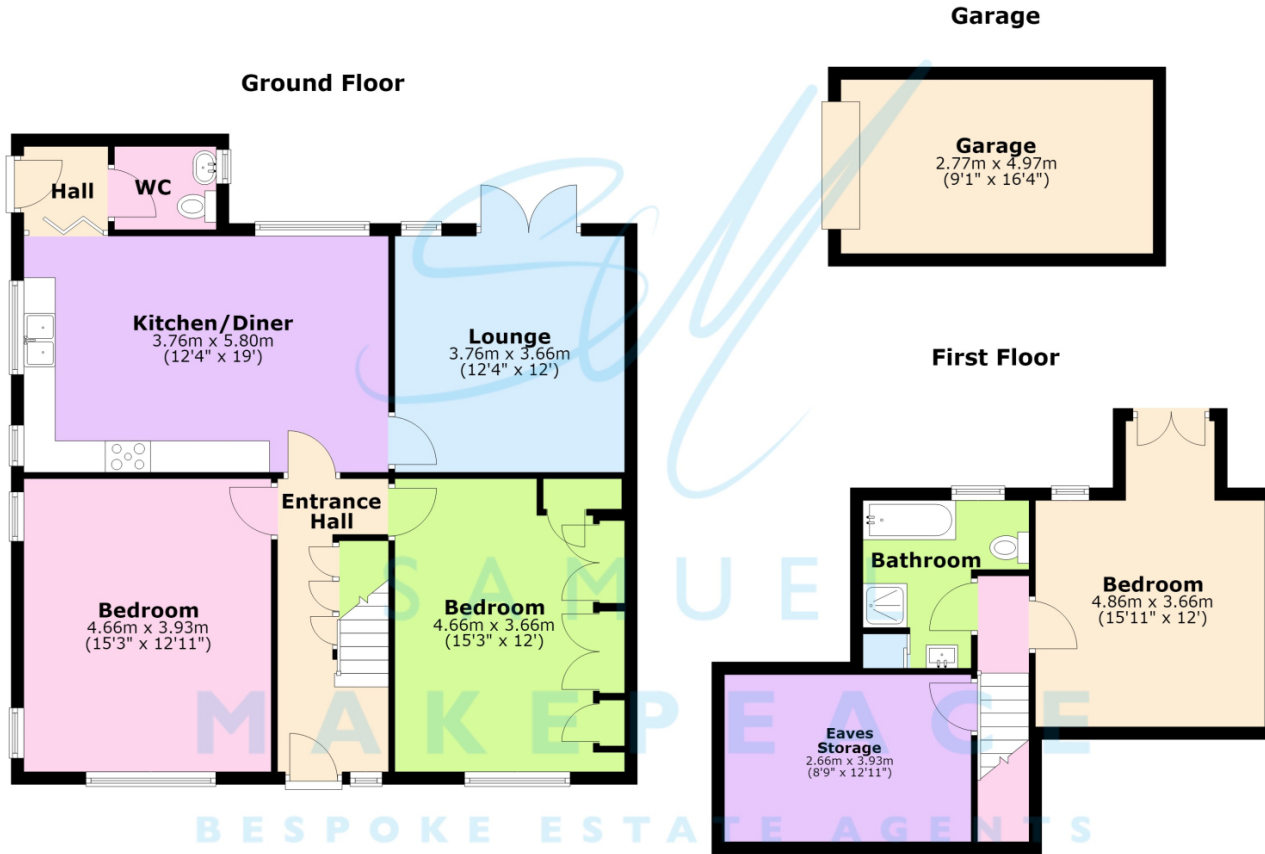
The ground floor begins with an impressive entrance hall, where bespoke under-stairs storage, panelled walls, a glass and oak balustrade and herringbone-style luxury vinyl flooring immediately set the tone. The lounge is light, spacious and wonderfully inviting, with a full-height double-glazed window and French patio doors opening onto the rear garden, and those far reaching views, that can be gazed upon from your sofa. At the heart of the home is the superb open-plan kitchen diner, fitted with bespoke wall and base units, quartz work surfaces, a double Belfast sink and an excellent range of integrated appliances, including a five-burner AEG gas hob, cooker hood, AEG double oven, dishwasher, washing machine and fridge freezer. Three double-glazed windows flood the space with natural light, making this a fantastic room for family life and entertaining. Also on the ground floor are two well-proportioned bedrooms, one featuring three double-glazed windows and stylish wall panelling, while the other benefits from fitted wardrobes. A beautifully finished cloakroom completes the level, with a fitted vanity unit, low-level WC, towel radiator and further panelled detailing. Upstairs, the landing offers useful eaves storage and leads to the principal bedroom, a fabulous retreat with a skylight and French doors opening onto a Juliette balcony. The first-floor bathroom is equally impressive, offering both a bath and separate shower cubicle, vanity wash basin, low-level WC, towel radiator and tasteful part-tiled walls. Outside, the property continues to impress. The front provides a driveway with parking for multiple vehicles and access along the side, while the rear has been designed for relaxing and entertaining, with a paved patio leading onto a large raised deck enclosed by a metal balustrade. The detached garage is equipped with a roller shutter door, power and lighting, providing excellent storage or workshop potential. With its spectacular presentation, versatile accommodation, generous parking and breathtaking position in sought-after Mow Cop, this is a very special home that must be viewed to be fully appreciated.

**Disclaimer:** All property particulars are provided in good faith and are believed to be accurate to the best of our knowledge at the time of publication. Samuel Makepeace (Newcastle & Stoke) Ltd t/a Samuel Makepeace Bespoke Estate Agents cannot accept any responsibility for any errors, omissions, or misstatements. Prospective purchasers are advised to verify the details independently and should not rely solely on the information provided when making decisions. These particulars remain the property of Samuel Makepeace Bespoke Estate Agents Stoke on Trent, Newcastle Under Lyme & Alsager.

We have used artificial furnishings on a select number of photos on this advert







Total area: approx. 134.8 sq. metres (1451.4 sq. feet)

Floorplans are provided as a guide only. All measurements are not to be relied upon. To confirm any measurements and layouts you must check yourself. Samuel Makepeace Bespoke Estate Agents do not accept any liability for the accuracy of this. Plan produced using PlanUp.

Energy Efficiency Rating		Current	Potential
Very energy efficient - lower running costs			
(92+)	<b>A</b>		
(81-91)	<b>B</b>		
(69-80)	<b>C</b>		
(55-68)	<b>D</b>		
(39-54)	<b>E</b>	59	77
(21-38)	<b>F</b>		
(1-20)	<b>G</b>		
Not energy efficient - higher running costs			
England, Scotland & Wales		EU Directive 2002/91/EC	

Address: High Street, Mow Cop, ST7

Environmental Impact (CO <sub>2</sub> ) Rating		Current	Potential
Very environmentally friendly - lower CO <sub>2</sub> emissions			
(92+)	<b>A</b>		
(81-91)	<b>B</b>		
(69-80)	<b>C</b>		
(55-68)	<b>D</b>		
(39-54)	<b>E</b>	54	74
(21-38)	<b>F</b>		
(1-20)	<b>G</b>		
Not environmentally friendly - higher CO <sub>2</sub> emissions			
England, Scotland & Wales		EU Directive 2002/91/EC	

Scan me for more info

