



## Worple Road, SW19

### £645,000

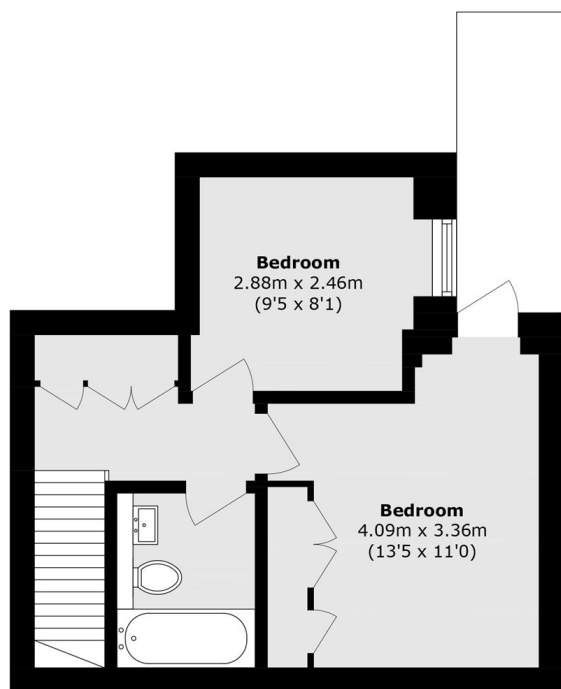
An exceptional two double bedroom, split level, new build apartment, complete with its own front door and a private courtyard garden accessible from the principle bedroom.

Located just a short distance from central Wimbledon with the district line tube, overground train and tram line, as well as exclusive shops, restaurants, pubs and bars.

### Features

- Own Front Door
- Split Level
- Two Double Bedrooms
- Private Courtyard Garden
- New Build Development
- Open Kitchen/ Dining Room

# Worple Road, London, SW19



**Lower Ground Floor**



**Ground Floor**

Total area (approx.): 67.7 sq. m (728.7 sq. ft)