

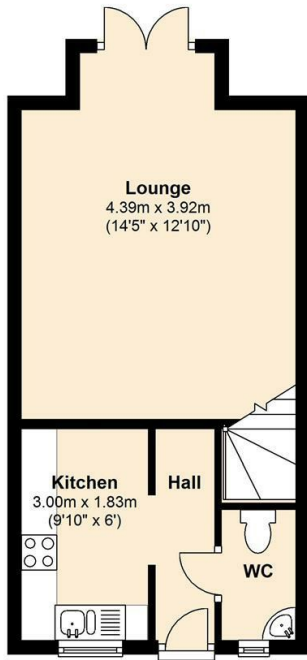
Prospect House, 3a St Thomas Place, Ely,  
Cambs., CB7 4EX  
01353 665020 | [lettings@clarkhomes.co.uk](mailto:lettings@clarkhomes.co.uk)  
[clarkhomes.co.uk](http://clarkhomes.co.uk)



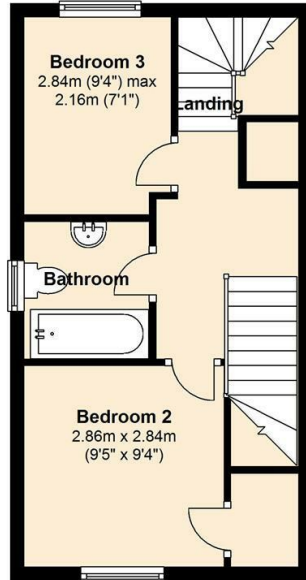
29 Fishers Bank, Littleport, CB6 1LL  
£1,150 PCM



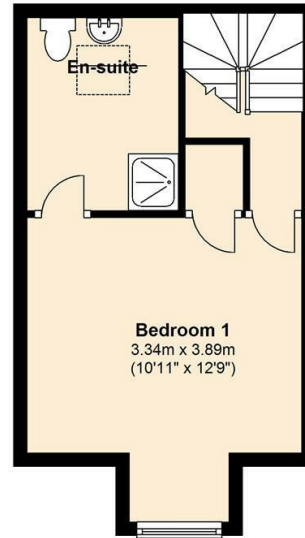
**Ground Floor**  
Approx. 34.6 sq. metres (372.2 sq. feet)



**First Floor**  
Approx. 32.0 sq. metres (344.6 sq. feet)



**Second Floor**  
Approx. 23.7 sq. metres (255.4 sq. feet)



Total area: approx. 90.3 sq. metres (972.2 sq. feet)

This floorplan is produced purely as a guide to the property and it is not to scale therefore its strict accuracy is not guaranteed. It should not be used to order goods or services by a prospective purchaser who should visit the property and satisfy themselves with regard to measurements and layout.

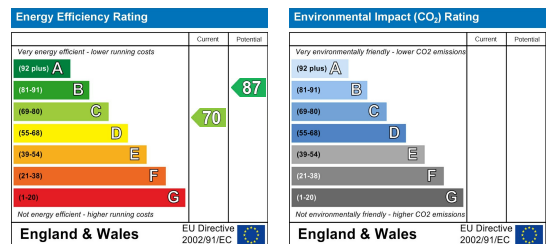
Plan produced using PlanUp.



Tucked away in a peaceful cul-de-sac on the edge of Littleport, this modern three-storey townhouse offers a bright, freshly decorated living space ideal for families or professionals. The ground floor flows from a welcoming hallway into a light living room where French doors open onto a private garden – perfect for summer evenings or weekend relaxation. Two bedrooms and a family bathroom occupy the first floor, while the entire top level is dedicated to a generous master suite with its own shower room. With gas heating, double glazing, a garage, and a well-kept garden, this home blends comfort, practicality, and modern style. EPC C Council Tax C

Directions to the property using What3Words.  
Enter the link in your browser then click on Waze or Google Maps:

**P1081**



These particulars, whilst believed to be accurate are set out as a general outline only for guidance and do not constitute any part of an offer or contract. Intending purchasers should not rely on them as statements of representation of fact, but must satisfy themselves by inspection or otherwise as to their accuracy. No person in this firm's employment has the authority to make or give any representation or warranty in respect of the property.