

for sale

offers over **£180,000** Freehold



Vicarage Road Wednesfield Wolverhampton WV11 1SF

A spacious three-bed mid-terraced home with driveway, lounge, kitchen/diner, lean-to and three good-sized bedrooms. Close to transport links, shops and well-regarded schools—ideal for families seeking convenience and comfort



Property Details

Entrance Hallway

Stairs to first floor; Door to lounge

Lounge

13' 5" x 11' 11" (4.09m x 3.63m)
Double glazed window to front aspect; Door to kitchen/diner;
Storage cupboard

Kitchen/Diner

16' 2" x 8' 11" (4.93m x 2.72m)
Double glazed window to rear aspect; Doors to lean-to, lounge
and lobby

Lean-To

11' 4" x 9' 8" (3.45m x 2.95m)
Double glazed window to rear aspect; Door to garden

Lobby

Door to ground floor wc

Ground Floor Bathroom

Double glazed window to rear aspect; Bath with shower over;
Toilet; Basin

Landing

Doors to bedrooms

Bedroom One

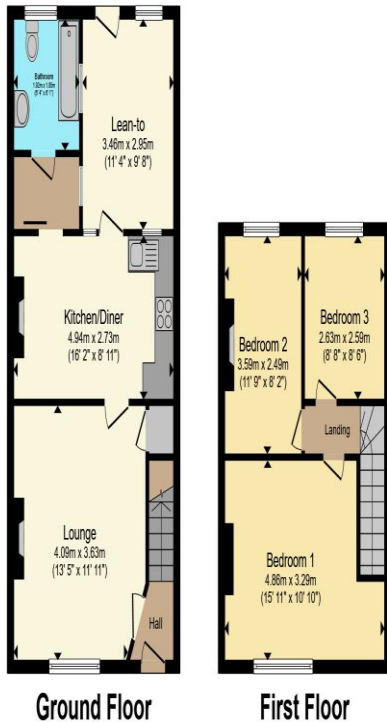
15' 11" x 10' 10" (4.85m x 3.30m)
Double glazed window to front aspect

Bedroom Two

11' 9" x 8' 2" (3.58m x 2.49m)
Double glazed window to rear aspect

Bedroom Three

8' 8" x 8' 6" (2.64m x 2.59m)
Double glazed window to rear aspect



To view this property please contact Paul Dubberley on

T 01902 494966
E bilston@pauldubberley.co.uk

69 Church Street
BILSTON WV14 0AX

Property Ref: PBI104864 - 0005

Tenure: Freehold EPC Rating: E

Council Tax Band: A

Total floor area 90.8 m² (977 sq.ft.) approx

This floor plan is for illustrative purposes only. It is not drawn to scale. Any measurements, floor areas (including any total floor area), openings and orientation are approximate. No details are guaranteed, they cannot be relied upon for any purpose and they do not form part of any agreement. No liability is taken for any error, omission or misstatement. A party must rely upon its own inspection(s). Powered by www.propertybox.io



1. MONEY LAUNDERING REGULATIONS Intending purchasers will be asked to produce identification documentation at a later stage and we would ask for your co-operation in order that there will be no delay in agreeing the sale. 2. These particulars do not constitute part or all of an offer or contract. 3. The measurements indicated are supplied for guidance only and as such must be considered incorrect. Potential buyers are advised to recheck measurements before committing to any expense. 4. We have not tested any apparatus, equipment, fixtures, fittings or services and it is in the buyers interest to check the working condition of any appliances.

Paul Dubberley is a trading name of Connells Residential which is registered in England and Wales under company number 1489613, Registered Office is Cumbria House, 16-20 Hockliffe Street, Leighton Buzzard, Bedfordshire, LU7 1GN. VAT Registration Number is 500 2481 05.

see all our properties at www.pauldubberley.co.uk | www.rightmove.co.uk | www.zoopla.co.uk