



47 Brownfield Gardens, Maidenhead, SL6 2RL
£249,995

 **HORLER**

47 Brownfield Gardens, Maidenhead, SL6 2RL

This beautifully designed 40x20ft park home offers stylish, contemporary living in the highly desirable Brownfield Gardens community in Maidenhead. Thoughtfully crafted for comfort and modern convenience, this brand-new property features a spacious open-plan layout ideal for today's lifestyle.

The home includes two generous bedrooms, with the master benefiting from a private en-suite, plus a second elegant bathroom finished to a high specification. The bright and airy living area seamlessly combines lounge, dining, and kitchen spaces, complete with a sleek fitted kitchen and premium finishes throughout.

Nestled within the tranquil setting of Brownfield Gardens, residents enjoy a friendly community atmosphere alongside easy access to local amenities and excellent transport connections. With its modern design, quality finish, and ready-to-move-in appeal, this home is perfect for anyone seeking a fresh start in a contemporary, low-maintenance environment.



General Information

Ground Rent - TBC

Council Tax Band 'A'

Family Park

Legal Note

Although these particulars are thought to be materially correct their accuracy cannot be guaranteed and they do not form part of any contract.



Brownfield Gardens SL6

Approximate Gross Internal Floor Area = 57.6 sq m / 621 sq ft

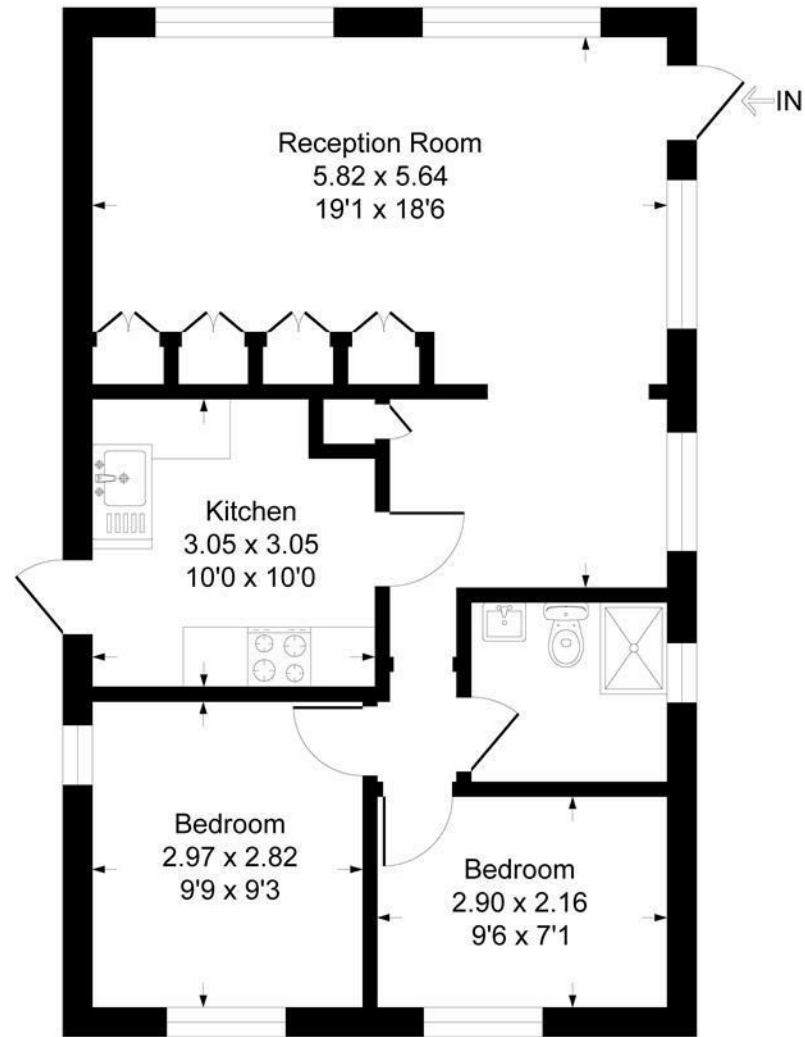


Illustration for identification purposes only, measurements are approximate, not to scale.
Produced By Esjay Property Marketing