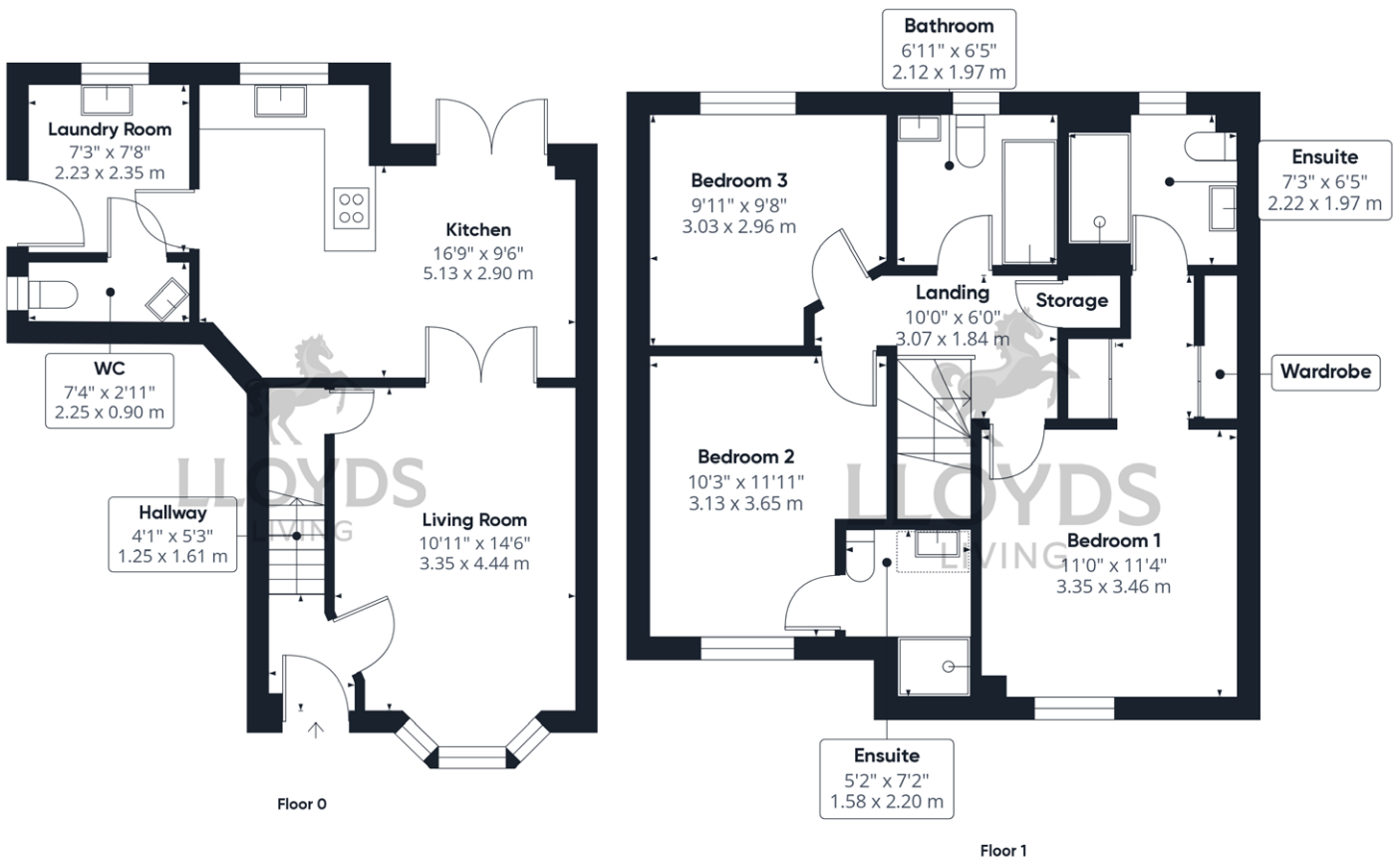


# Axbridge

(3 bedrooms) 103.9 sq m / 1,119 sq ft

A modern, beautifully designed three-bedroom home. This property boasts a good-sized living room with bay window to the front and handy storage cupboard under the stairs, Double doors open into the modern kitchen dining room which spans across the rear of the property with French doors leading to the garden and patio area. The kitchen benefits from integrated appliances such as a fridge freezer and dishwasher, a handy utility room with doors out to the garden and a downstairs W/C.

Upstairs the generously sized principal bedroom features fully fitted wardrobes, a dressing area and a contemporary ensuite with a large double shower. Bedroom two is a spacious double room benefiting from an en-suite. Bedroom three is also a double room which has full use of the modern family bathroom with bath. This property has an integral garage and driveway parking.



All details provided are indicative and intended to act as a guide only and may change. These details should be treated as general guidance only and cannot be relied upon as accurately describing any of the specified matters prescribed by any order under the Consumer Protection from Unfair Trading Regulations 2008. Nor do they constitute a contract or a warranty. Dimensions should not be used for carpet sizes, appliances or furniture. Lloyds Living operate a policy of continuous product development and individual features such as specification, windows and elevational treatments may vary.

Whilst every attempt has been made to ensure the accuracy of the floorplan contained in this brochure, measurements of doors, windows, rooms and any other items are approximate and no responsibility is taken for any error, omission, or mis-statement. The measurements should not be relied upon for valuation, transaction and/or funding purposes. This plan is for illustrative purposes only and should be used as such by any prospective purchaser or tenant.

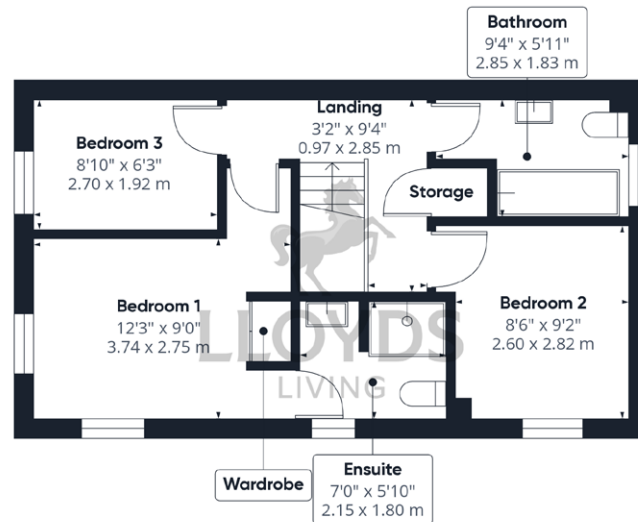
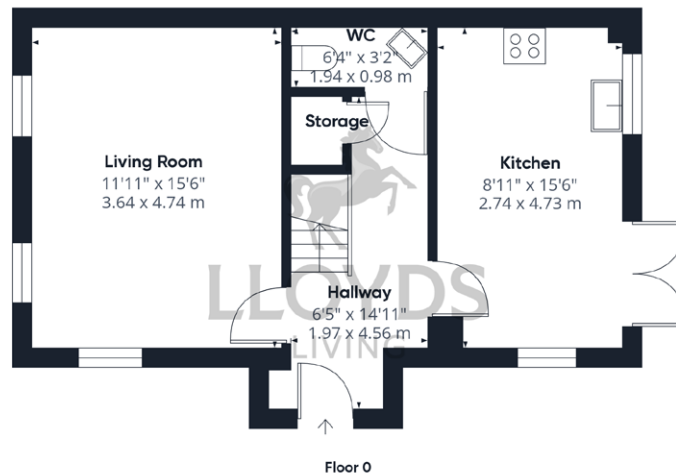
# Capesthorpe

(3 bedrooms) 87.9sq m / 947 sq ft

This well presented three bedroom home offers an excellent open plan living space, with a modern kitchen diner. The spacious lounge is dual aspect to the front and side allowing the room to be filled with natural light. The property offers a modern kitchen diner and comes equipped with a single electric oven, gas hob, integrated fridge freezer, dishwasher and a washing machine, with French doors leading out to the patio and garden.

The property also benefits from a downstairs W/C. Upstairs, Bedroom one has windows to the front and side and is complete with fitted wardrobes and a stylish en-suite.

Bedroom two also has a fitted wardrobe and a window to the front of the property whilst bedroom three has a window to the side. The contemporary family bathroom has a shower over the bath and a bath screen. There is a storage cupboard off the first-floor landing.



All details provided are indicative and intended to act as a guide only and may change. These details should be treated as general guidance only and cannot be relied upon as accurately describing any of the specified matters prescribed by any order under the Consumer Protection from Unfair Trading Regulations 2008. Nor do they constitute a contract or a warranty. Dimensions should not be used for carpet sizes, appliances or furniture. Lloyds Living operate a policy of continuous product development and individual features such as specification, windows and elevational treatments may vary.

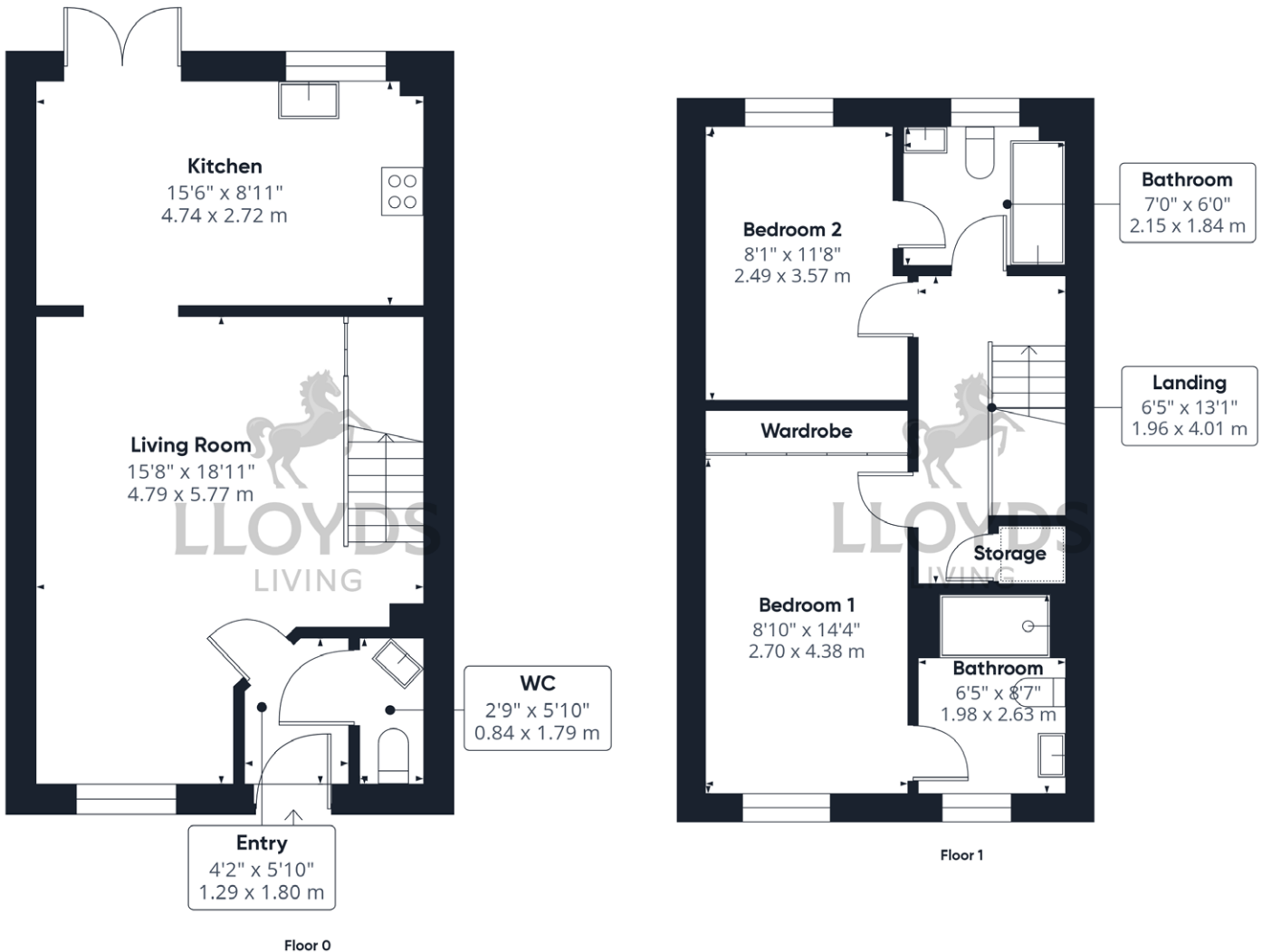
Whilst every attempt has been made to ensure the accuracy of the floorplan contained in this brochure, measurements of doors, windows, rooms and any other items are approximate and no responsibility is taken for any error, omission, or mis-statement. The measurements should not be relied upon for valuation, transaction and/or funding purposes. This plan is for illustrative purposes only and should be used as such by any prospective purchaser or tenant.

# Daresbury

(2 bedrooms) 86.7 sq m / 934 sq ft

A cleverly designed two bedroom home offers a flexible open plan living space with a modern fully fitted kitchen. The spacious living room has a window to the front and ample space for entertaining. The kitchen is fully equipped with a single electric oven, gas hob and extractor fan. You will also find an integrated dishwasher, washing machine and a fridge freezer, with French doors leading out to the garden and patio area. A W/C completes the downstairs of this lovely house.

Upstairs are two good sized bedrooms, Bedroom one has fitted wardrobes and a spacious en suite with a double shower. Bedroom two is also a generous double room with access to the family bathroom which has a shower over the bath and bath screen.



All details provided are indicative and intended to act as a guide only and may change. These details should be treated as general guidance only and cannot be relied upon as accurately describing any of the specified matters prescribed by any order under the Consumer Protection from Unfair Trading Regulations 2008. Nor do they constitute a contract or a warranty. Dimensions should not be used for carpet sizes, appliances or furniture. Lloyds Living operate a policy of continuous product development and individual features such as specification, windows and elevational treatments may vary.

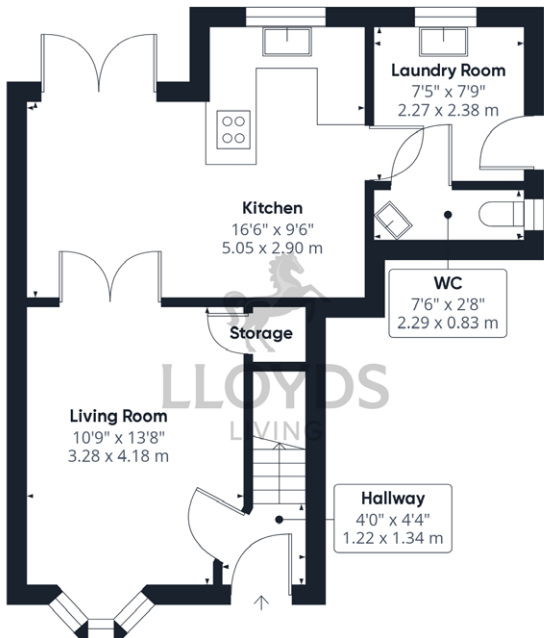
Whilst every attempt has been made to ensure the accuracy of the floorplan contained in this brochure, measurements of doors, windows, rooms and any other items are approximate and no responsibility is taken for any error, omission, or mis-statement. The measurements should not be relied upon for valuation, transaction and/or funding purposes. This plan is for illustrative purposes only and should be used as such by any prospective purchaser or tenant.

# Knutsford

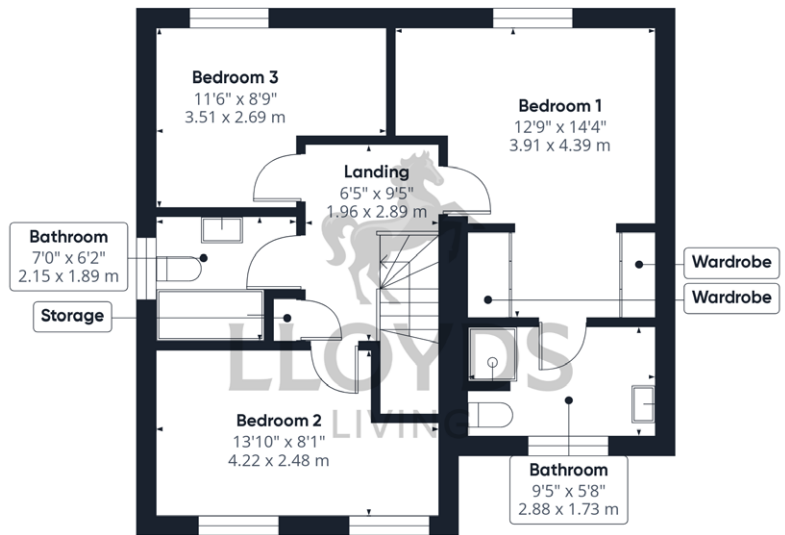
(3 bedrooms) 98.1 sq m / 1,056 sq ft

A modern beautifully designed three-bedroom home. This property boasts a good-sized living room with a bay window to the front and a handy storage cupboard under the stairs. Double doors open into the modern kitchen dining room which spans across the rear of the property, with French doors leading to the garden and patio area. The kitchen benefits from integrated appliances such as a fridge freezer and dishwasher, with a handy utility room with doors out to the garden and a downstairs W/C.

Upstairs, the generously sized principal bedroom has fully fitted wardrobes with a dressing area and contemporary ensuite. Bedroom two is a good-sized double room with two windows to the front, whilst bedroom three is a single room with a window overlooking the garden. These bedrooms share the family bathroom which has a shower and screen over the bath. This property has an integral garage and driveway parking.



Floor 0



Floor 1



All details provided are indicative and intended to act as a guide only and may change. These details should be treated as general guidance only and cannot be relied upon as accurately describing any of the specified matters prescribed by any order under the Consumer Protection from Unfair Trading Regulations 2008. Nor do they constitute a contract or a warranty. Dimensions should not be used for carpet sizes, appliances or furniture. Lloyds Living operate a policy of continuous product development and individual features such as specification, windows and elevational treatments may vary.

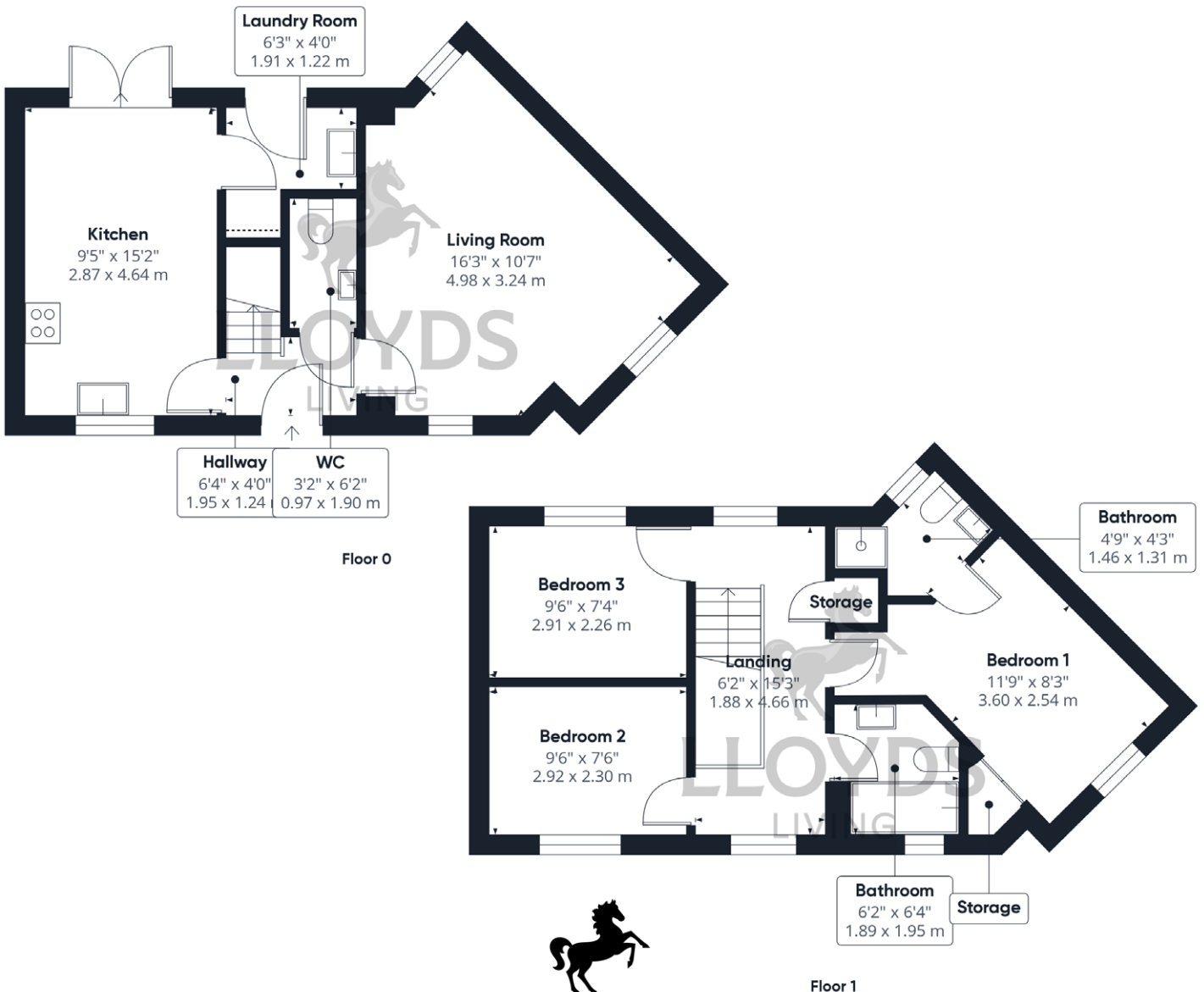
Whilst every attempt has been made to ensure the accuracy of the floorplan contained in this brochure, measurements of doors, windows, rooms and any other items are approximate and no responsibility is taken for any error, omission, or mis-statement. The measurements should not be relied upon for valuation, transaction and/or funding purposes. This plan is for illustrative purposes only and should be used as such by any prospective purchaser or tenant.

# Dalton

(3 bedrooms) 87.1 sq m / 938 sq ft

This unique 3 bedroom semi detached home offers a bright and airy living space. The kitchen diner is dual aspect, boasting a thoughtfully designed fully fitted kitchen which features a single electric oven, gas hob and extractor fan. You will also find an integrated dishwasher, washing machine and a fridge freezer. The French doors lead out to the garden and patio area. The property has the benefit of a utility room with a door to the garden. The living room is also dual aspect with windows to the front and rear allowing for lots of natural light. A W/C completes the downstairs.

Upstairs, the spacious landing has windows to the front and rear and a storage cupboard. Bedroom one overlooks the front and has a stylish en suite shower room. Bedroom two also overlooks the front and bedroom three the rear garden. The modern family bathroom has a shower and screen over the bath.



All details provided are indicative and intended to act as a guide only and may change. These details should be treated as general guidance only and cannot be relied upon as accurately describing any of the specified matters prescribed by any order under the Consumer Protection from Unfair Trading Regulations 2008. Nor do they constitute a contract or a warranty. Dimensions should not be used for carpet sizes, appliances or furniture. Lloyds Living operate a policy of continuous product development and individual features such as specification, windows and elevational treatments may vary.

Whilst every attempt has been made to ensure the accuracy of the floorplan contained in this brochure, measurements of doors, windows, rooms and any other items are approximate and no responsibility is taken for any error, omission, or mis-statement. The measurements should not be relied upon for valuation, transaction and/or funding purposes. This plan is for illustrative purposes only and should be used as such by any prospective purchaser or tenant.

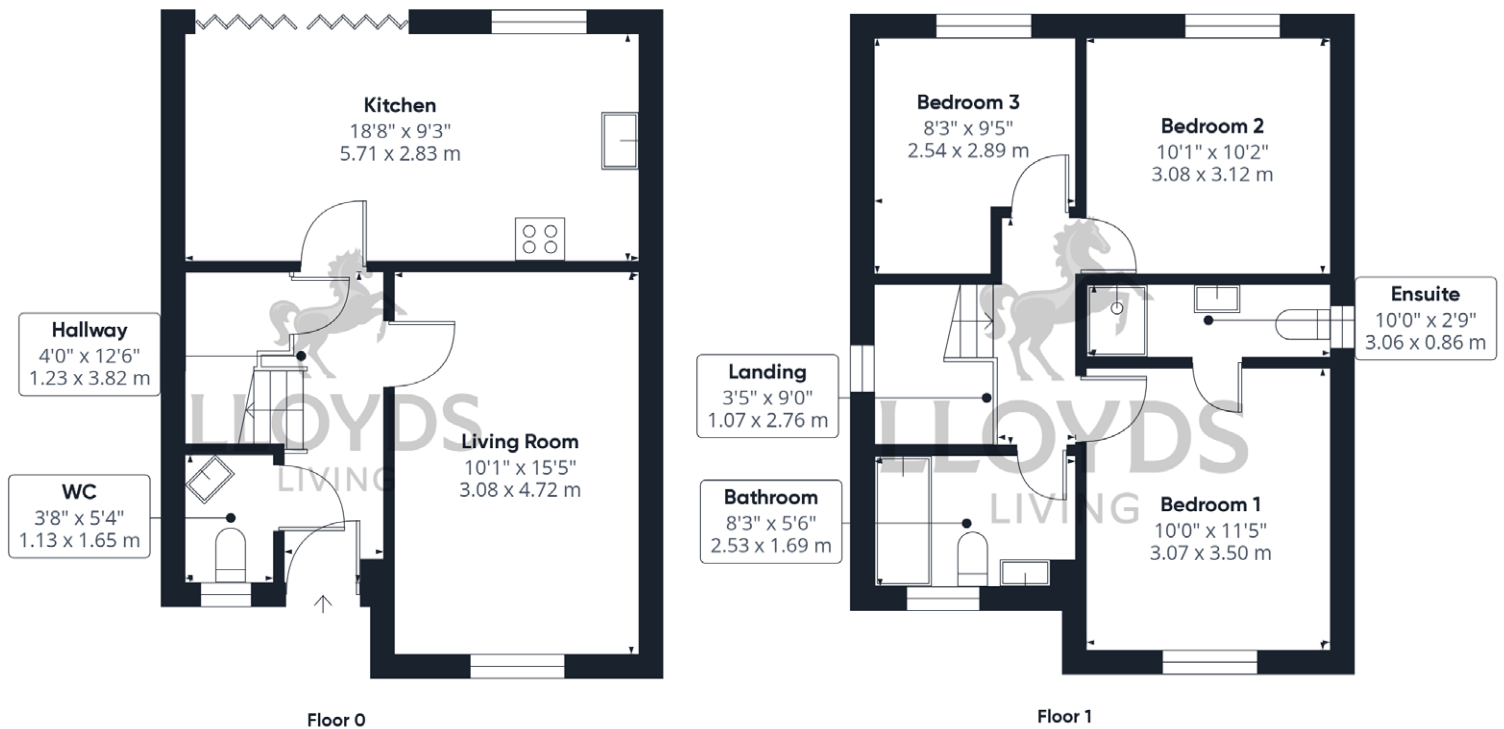
# Davenham

(3 bedrooms) 88.9 sq m / 957 sq ft

This striking three-bedroom home features a spacious living room and a sociable kitchen dining room with lots of natural light. The kitchen is fully equipped with a single electric oven, gas hob and extractor fan. You will also find an integrated dishwasher, washing machine and a fridge freezer. The dining area has ample space for a dining table and entertaining with bi fold doors leading out to the garden and patio. The lounge is spacious with a large bay window to the front. Downstairs also features a W/C and a useful storage cupboard.

Upstairs, Bedroom 1 is complete with a stylish en-suite and fitted wardrobe. Bedroom two is a double room and overlooks the rear garden, whilst Bedroom three is a single room which also overlooks the garden. These bedrooms share the family bathroom which has a shower and screen over the bath.

Note: Plots 69, 74, 106 and 164 do not have a bay window to the lounge.



All details provided are indicative and intended to act as a guide only and may change. These details should be treated as general guidance only and cannot be relied upon as accurately describing any of the specified matters prescribed by any order under the Consumer Protection from Unfair Trading Regulations 2008. Nor do they constitute a contract or a warranty. Dimensions should not be used for carpet sizes, appliances or furniture. Lloyds Living operate a policy of continuous product development and individual features such as specification, windows and elevational treatments may vary.

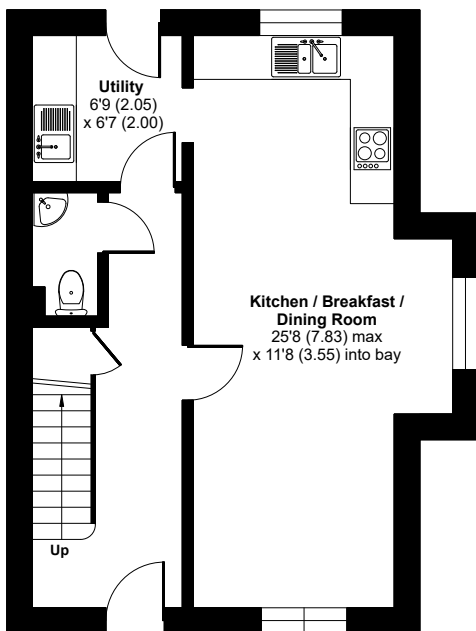
Whilst every attempt has been made to ensure the accuracy of the floorplan contained in this brochure, measurements of doors, windows, rooms and any other items are approximate and no responsibility is taken for any error, omission, or mis-statement. The measurements should not be relied upon for valuation, transaction and/or funding purposes. This plan is for illustrative purposes only and should be used as such by any prospective purchaser or tenant.

# Melford SA Crescent

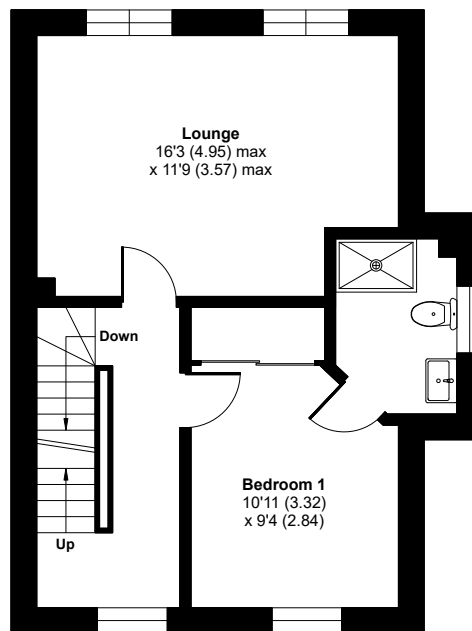
Plots 152 & 163 (3 bedrooms) 114.3 sq m / 1,232 sq ft

A well-presented three-bedroom townhouse offering a perfect blend of comfort and convenience, with a modern fitted kitchen/diner and spacious lounge. The well-designed kitchen comes complete with fully integrated appliances including a fridge freezer, washing machine, dishwasher and electric oven and hob. This triple aspect room has a large dining and family area perfect for entertaining. This property also benefits from a handy utility room with doors out to the rear garden, a downstairs W/C and storage cupboard.

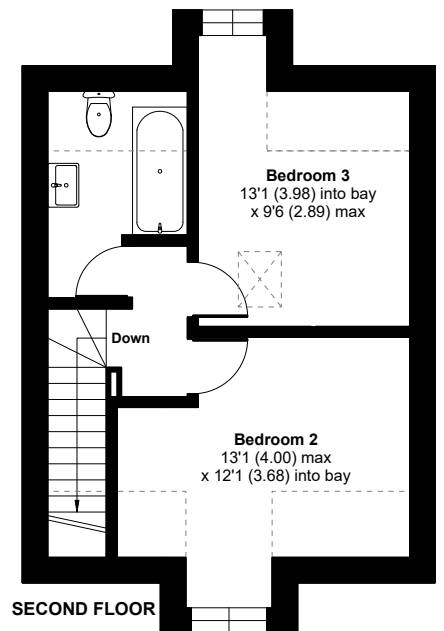
On the first floor, you have a generous sized living room with two windows overlooking the rear garden and the principal bedroom with an en suite shower room. The second floor boasts two good sized bedrooms and a modern family bathroom which has shower and screen over bath.



GROUND FLOOR



FIRST FLOOR



SECOND FLOOR



**LLOYDS**  
LIVING

All details provided are indicative and intended to act as a guide only and may change. These details should be treated as general guidance only and cannot be relied upon as accurately describing any of the specified matters prescribed by any order under the Consumer Protection from Unfair Trading Regulations 2008. Nor do they constitute a contract or a warranty. Dimensions should not be used for carpet sizes, appliances or furniture. Lloyds Living operate a policy of continuous product development and individual features such as specification, windows and elevational treatments may vary.

Whilst every attempt has been made to ensure the accuracy of the floorplan contained in this brochure, measurements of doors, windows, rooms and any other items are approximate and no responsibility is taken for any error, omission, or mis-statement. The measurements should not be relied upon for valuation, transaction and/or funding purposes. This plan is for illustrative purposes only and should be used as such by any prospective purchaser or tenant.

# Cotswold

(3 bedrooms) 89 sq m / 959 sq ft

This well presented three bedroom home offers an excellent open plan living space, with a modern kitchen diner. The spacious lounge is dual aspect to the front and side allowing the room to be filled with natural light.

The property offers a modern kitchen diner and comes equipped with a single electric oven, gas hob, integrated fridge freezer, dishwasher and a washing machine, with French doors leading out to the patio and garden.

The property also benefits from a downstairs W/C. Upstairs Bedroom one is dual aspect with windows to the front and side and is complete with fitted wardrobes and a stylish en-suite. Bedroom two also has a fitted wardrobe and a window to the front of the property whilst bedroom three has a window to the side. The contemporary family bathroom has a shower over the bath and a bath screen. There is a storage cupboard off the first-floor landing.



All details provided are indicative and intended to act as a guide only and may change. These details should be treated as general guidance only and cannot be relied upon as accurately describing any of the specified matters prescribed by any order under the Consumer Protection from Unfair Trading Regulations 2008. Nor do they constitute a contract or a warranty. Dimensions should not be used for carpet sizes, appliances or furniture. Lloyds Living operate a policy of continuous product development and individual features such as specification, windows and elevational treatments may vary.

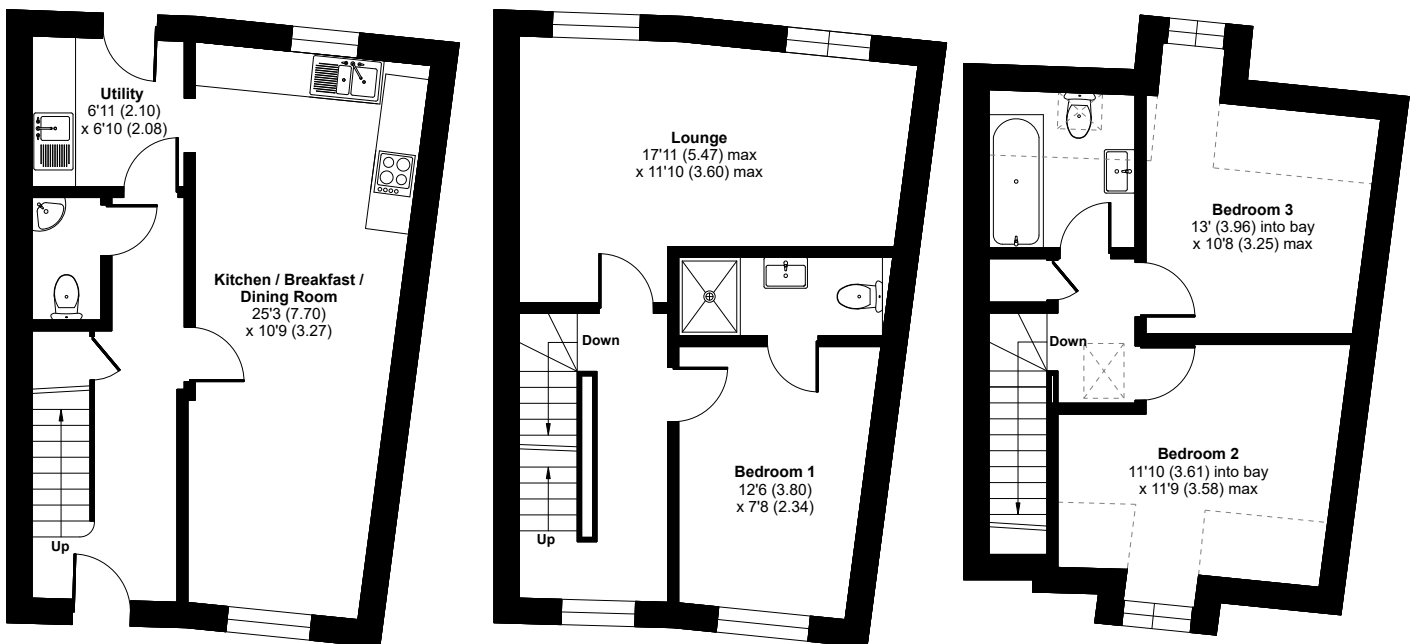
Whilst every attempt has been made to ensure the accuracy of the floorplan contained in this brochure, measurements of doors, windows, rooms and any other items are approximate and no responsibility is taken for any error, omission, or mis-statement. The measurements should not be relied upon for valuation, transaction and/or funding purposes. This plan is for illustrative purposes only and should be used as such by any prospective purchaser or tenant.

# Melford C Crescent

Plots 155, 156, 159 & 160 (3 bedrooms) 111 sq m / 1,159 sq ft

A well-presented three-bedroom townhouse offering a perfect blend of comfort and convenience, with a modern fitted kitchen/diner and spacious lounge. The well-designed kitchen comes complete with fully integrated appliances including a fridge freezer, washing machine, dishwasher and electric oven and hob. This triple aspect room has a large dining and family area perfect for entertaining. This property also benefits from a handy utility room with doors out to the rear garden, a downstairs W/C and storage cupboard.

On the first floor, you have a generous sized living room with two windows overlooking the rear garden and the principal bedroom with an en suite shower room. The second floor boasts two good sized bedrooms and a modern family bathroom which has shower and screen over bath.



All details provided are indicative and intended to act as a guide only and may change. These details should be treated as general guidance only and cannot be relied upon as accurately describing any of the specified matters prescribed by any order under the Consumer Protection from Unfair Trading Regulations 2008. Nor do they constitute a contract or a warranty. Dimensions should not be used for carpet sizes, appliances or furniture. Lloyds Living operate a policy of continuous product development and individual features such as specification, windows and elevational treatments may vary.

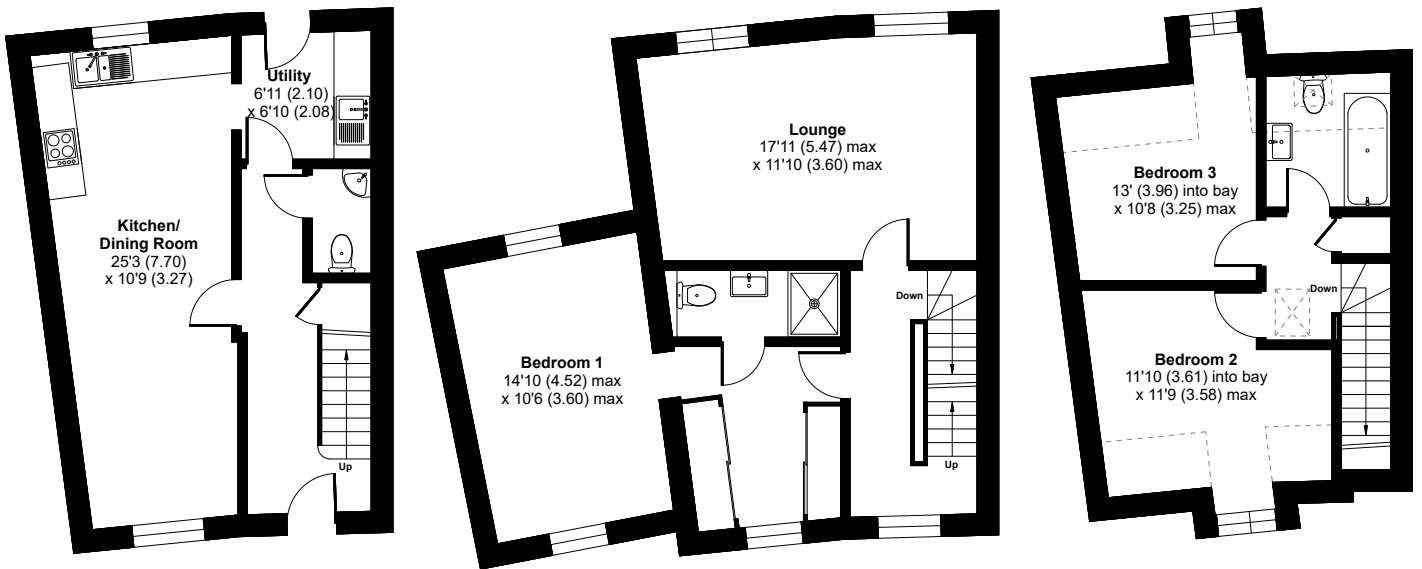
Whilst every attempt has been made to ensure the accuracy of the floorplan contained in this brochure, measurements of doors, windows, rooms and any other items are approximate and no responsibility is taken for any error, omission, or mis-statement. The measurements should not be relied upon for valuation, transaction and/or funding purposes. This plan is for illustrative purposes only and should be used as such by any prospective purchaser or tenant.

# Melford SP Crescent

Plots 157 & 158 (3 bedrooms) 126.3 sq m / 1,360 sq ft

A well-presented three-bedroom townhouse offering a perfect blend of comfort and convenience, with a modern fitted kitchen/diner and spacious lounge. The well-designed kitchen comes complete with fully integrated appliances including a fridge freezer, washing machine, dishwasher and electric oven and hob. This triple aspect room has a large dining and family area perfect for entertaining. This property also benefits from a handy utility room with doors out to the rear garden, a downstairs W/C and storage cupboard.

On the first floor, you have a generous sized living room with two windows overlooking the rear garden and the principal bedroom with an en suite shower room. The second floor boasts two good sized bedrooms and a modern family bathroom which has shower and screen over bath.



All details provided are indicative and intended to act as a guide only and may change. These details should be treated as general guidance only and cannot be relied upon as accurately describing any of the specified matters prescribed by any order under the Consumer Protection from Unfair Trading Regulations 2008. Nor do they constitute a contract or a warranty. Dimensions should not be used for carpet sizes, appliances or furniture. Lloyds Living operate a policy of continuous product development and individual features such as specification, windows and elevational treatments may vary.

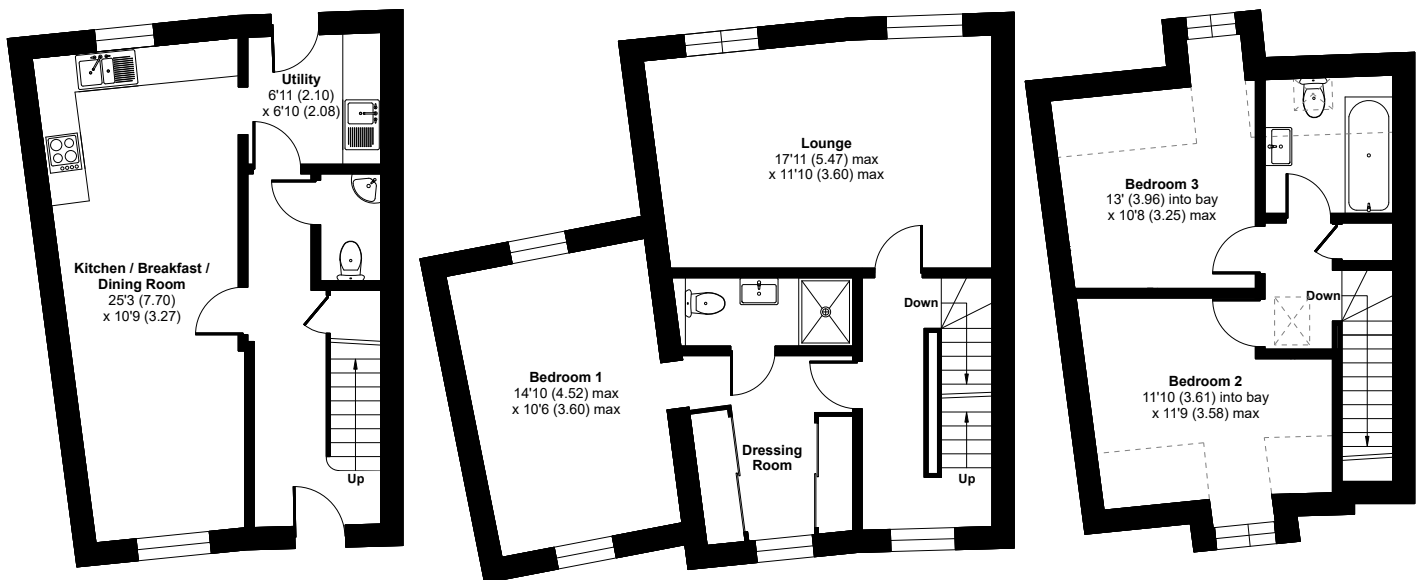
Whilst every attempt has been made to ensure the accuracy of the floorplan contained in this brochure, measurements of doors, windows, rooms and any other items are approximate and no responsibility is taken for any error, omission, or mis-statement. The measurements should not be relied upon for valuation, transaction and/or funding purposes. This plan is for illustrative purposes only and should be used as such by any prospective purchaser or tenant.

# T45 Melford SP3 Crescent

Plots 154 & 161 (3 bedrooms) 126.3 sq m / 1,360 sq ft

A well-presented three-bedroom townhouse offering a perfect blend of comfort and convenience, with a modern fitted kitchen/diner and spacious lounge. The well-designed kitchen comes complete with fully integrated appliances including a fridge freezer, washing machine, dishwasher and electric oven and hob. This triple aspect room has a large dining and family area perfect for entertaining. This property also benefits from a handy utility room with doors out to the rear garden, a downstairs W/C and storage cupboard.

On the first floor, you have a generous sized living room with two windows overlooking the rear garden and the principal bedroom with an en suite shower room. The second floor boasts two good sized bedrooms and a modern family bathroom which has shower and screen over bath.



All details provided are indicative and intended to act as a guide only and may change. These details should be treated as general guidance only and cannot be relied upon as accurately describing any of the specified matters prescribed by any order under the Consumer Protection from Unfair Trading Regulations 2008. Nor do they constitute a contract or a warranty. Dimensions should not be used for carpet sizes, appliances or furniture. Lloyds Living operate a policy of continuous product development and individual features such as specification, windows and elevational treatments may vary.

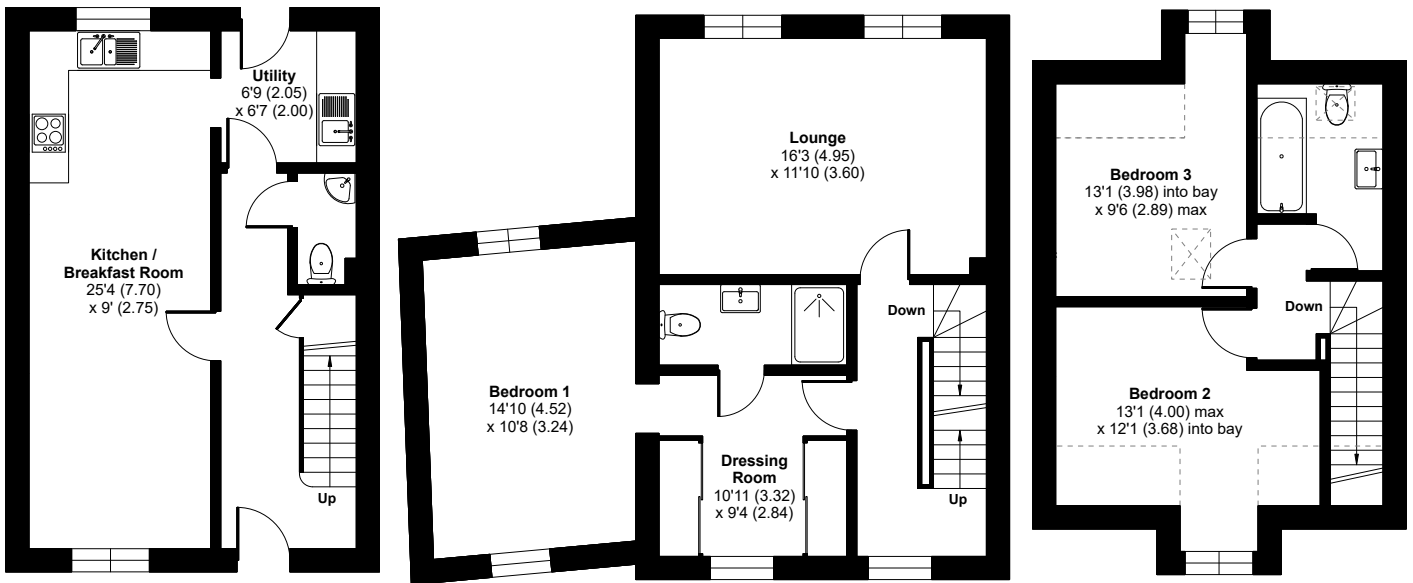
Whilst every attempt has been made to ensure the accuracy of the floorplan contained in this brochure, measurements of doors, windows, rooms and any other items are approximate and no responsibility is taken for any error, omission, or mis-statement. The measurements should not be relied upon for valuation, transaction and/or funding purposes. This plan is for illustrative purposes only and should be used as such by any prospective purchaser or tenant.

# Melford SP2 Crescent

Plots 153 & 162 (3 bedrooms) 121.9 sq m / 1,312 sq ft

A well-presented three-bedroom townhouse offering a perfect blend of comfort and convenience, with a modern fitted kitchen/diner and spacious lounge. The well-designed kitchen comes complete with fully integrated appliances including a fridge freezer, washing machine, dishwasher and electric oven and hob. This triple aspect room has a large dining and family area perfect for entertaining. This property also benefits from a handy utility room with doors out to the rear garden, a downstairs W/C and storage cupboard.

On the first floor, you have a generous sized living room with two windows overlooking the rear garden and the principal bedroom with an en suite shower room. The second floor boasts two good sized bedrooms and a modern family bathroom which has shower and screen over bath.



All details provided are indicative and intended to act as a guide only and may change. These details should be treated as general guidance only and cannot be relied upon as accurately describing any of the specified matters prescribed by any order under the Consumer Protection from Unfair Trading Regulations 2008. Nor do they constitute a contract or a warranty. Dimensions should not be used for carpet sizes, appliances or furniture. Lloyds Living operate a policy of continuous product development and individual features such as specification, windows and elevational treatments may vary.

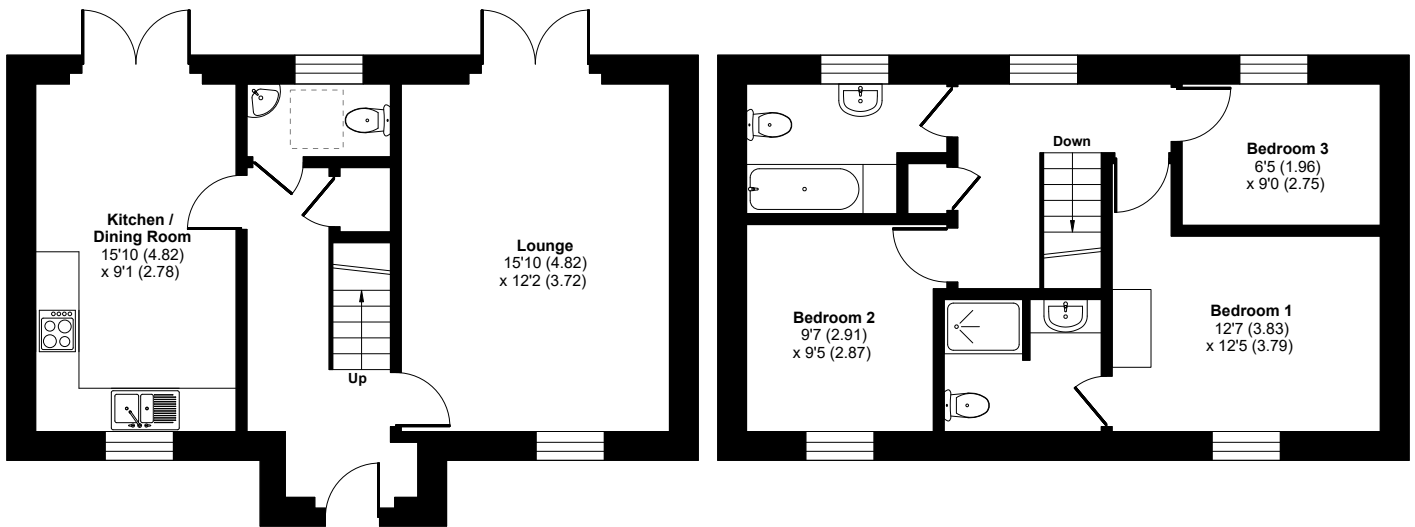
Whilst every attempt has been made to ensure the accuracy of the floorplan contained in this brochure, measurements of doors, windows, rooms and any other items are approximate and no responsibility is taken for any error, omission, or mis-statement. The measurements should not be relied upon for valuation, transaction and/or funding purposes. This plan is for illustrative purposes only and should be used as such by any prospective purchaser or tenant.

# The Ryedale

(3 bedrooms) 86.3 sq m / 930 sq ft

This well presented three-bedroom home offers excellent open plan living space, with a modern kitchen diner. The spacious lounge has a window to the front and French doors leading out to the garden and patio area. The property offers a modern kitchen diner and comes equipped with single electric oven, gas hob, integrated fridge freezer, dishwasher and a washing machine, with French doors leading out to the patio and garden. The property also benefits from a downstairs W/C and a storage cupboard.

Upstairs, Bedroom one is complete with fitted wardrobes and a stylish en-suite. There is a storage cupboard located off the first-floor landing. Bedroom two also has a fitted wardrobe and a window to the front of the property whilst bedroom three has a window overlooking the rear garden. The contemporary family bathroom has a shower over the bath and bath screen.



All details provided are indicative and intended to act as a guide only and may change. These details should be treated as general guidance only and cannot be relied upon as accurately describing any of the specified matters prescribed by any order under the Consumer Protection from Unfair Trading Regulations 2008. Nor do they constitute a contract or a warranty. Dimensions should not be used for carpet sizes, appliances or furniture. Lloyds Living operate a policy of continuous product development and individual features such as specification, windows and elevational treatments may vary.

Whilst every attempt has been made to ensure the accuracy of the floorplan contained in this brochure, measurements of doors, windows, rooms and any other items are approximate and no responsibility is taken for any error, omission, or mis-statement. The measurements should not be relied upon for valuation, transaction and/or funding purposes. This plan is for illustrative purposes only and should be used as such by any prospective purchaser or tenant.

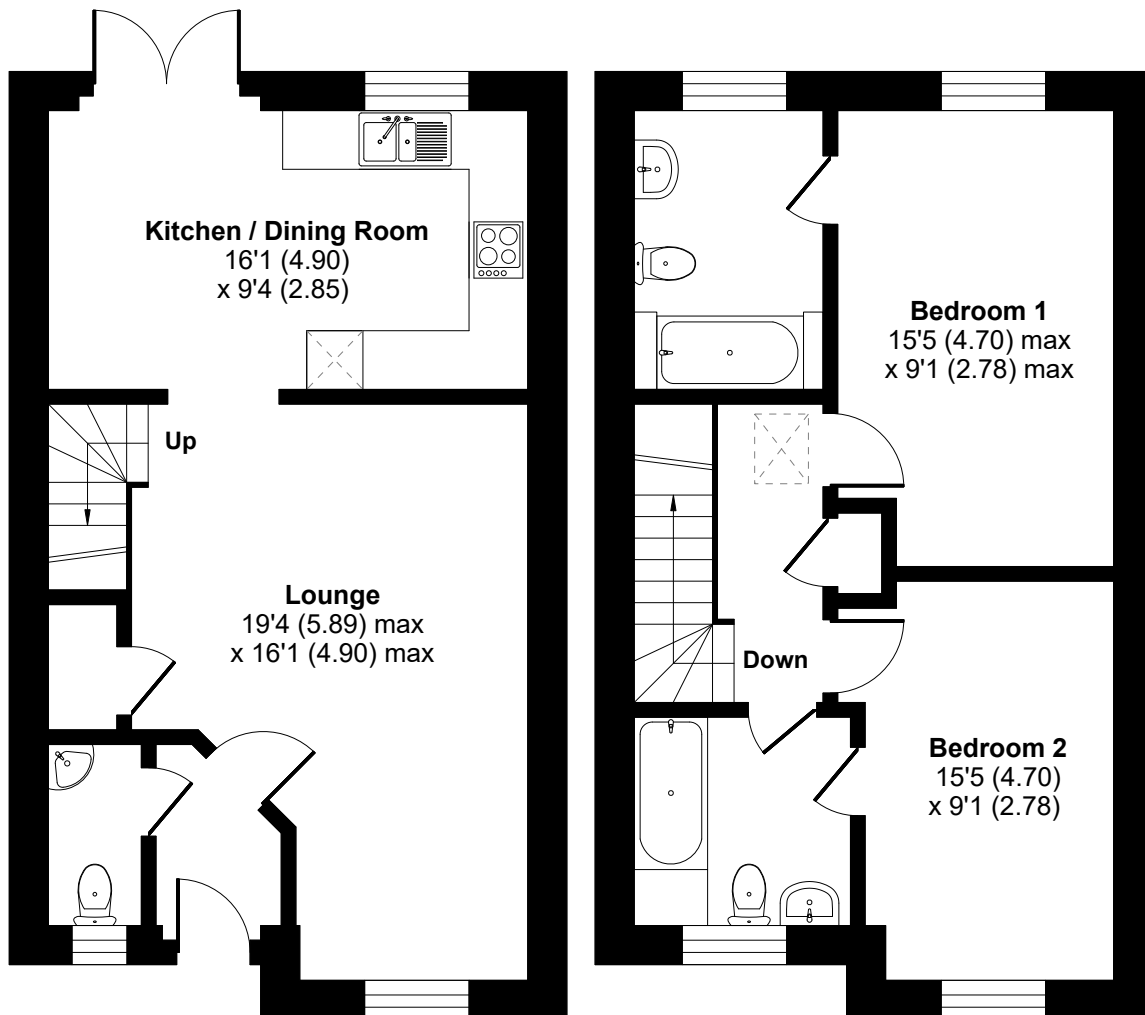
# Daventry

(2 bedrooms) 84.1 sq m / 906 sq ft

A cleverly designed two-bedroom home offering a flexible open plan living space with a modern fully fitted kitchen. The spacious living room has a window to the front and ample space for entertaining.

The kitchen is fully equipped with a single electric oven, gas hob and extractor fan. You will also find an integrated dishwasher, washing machine and fridge freezer, with French doors leading out to the garden and patio area.

A storage cupboard and W/C complete the downstairs of this lovely house. Upstairs are two spacious bedrooms, Bedroom one has fitted wardrobes and a spacious en suite with a double shower. Bedroom two is also a generous double room with access to the family bathroom which has a shower over the bath and bath screen.



All details provided are indicative and intended to act as a guide only and may change. These details should be treated as general guidance only and cannot be relied upon as accurately describing any of the specified matters prescribed by any order under the Consumer Protection from Unfair Trading Regulations 2008. Nor do they constitute a contract or a warranty. Dimensions should not be used for carpet sizes, appliances or furniture. Lloyds Living operate a policy of continuous product development and individual features such as specification, windows and elevational treatments may vary.

Whilst every attempt has been made to ensure the accuracy of the floorplan contained in this brochure, measurements of doors, windows, rooms and any other items are approximate and no responsibility is taken for any error, omission, or mis-statement. The measurements should not be relied upon for valuation, transaction and/or funding purposes. This plan is for illustrative purposes only and should be used as such by any prospective purchaser or tenant.