



201 Hayling Road, Watford
£485,000





201 Hayling Road

Watford

A COMPLETELY REFURBISHED THREE BEDROOM SEMI DETACHED PROPERTY PRESENTED IN EXCELLENT CONDITION. LOCATED ON A POPULAR RESIDENTIAL ROAD.

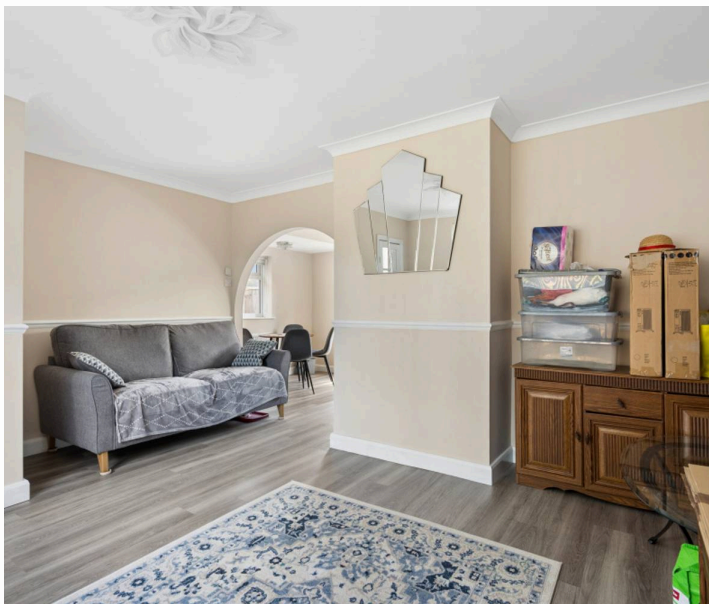
Council Tax band: D

Tenure: Freehold

EPC Energy Efficiency Rating: D

EPC Environmental Impact Rating: D

- BRICK BUILT HOUSE (STANDARD CONSTRUCTION)
- THREE BEDROOM'S SEMI DETACHED
- RECENTLY REFURBISHED
- MODERN KITCHEN & BATHROOM
- FITTED 'NEFF' KITCHEN APPLIANCES
- DOUBLE GLAZED & GAS CENTRAL HEATING
- SOUTH FACING REAR GARDEN
- COUNCIL TAX BAND - D





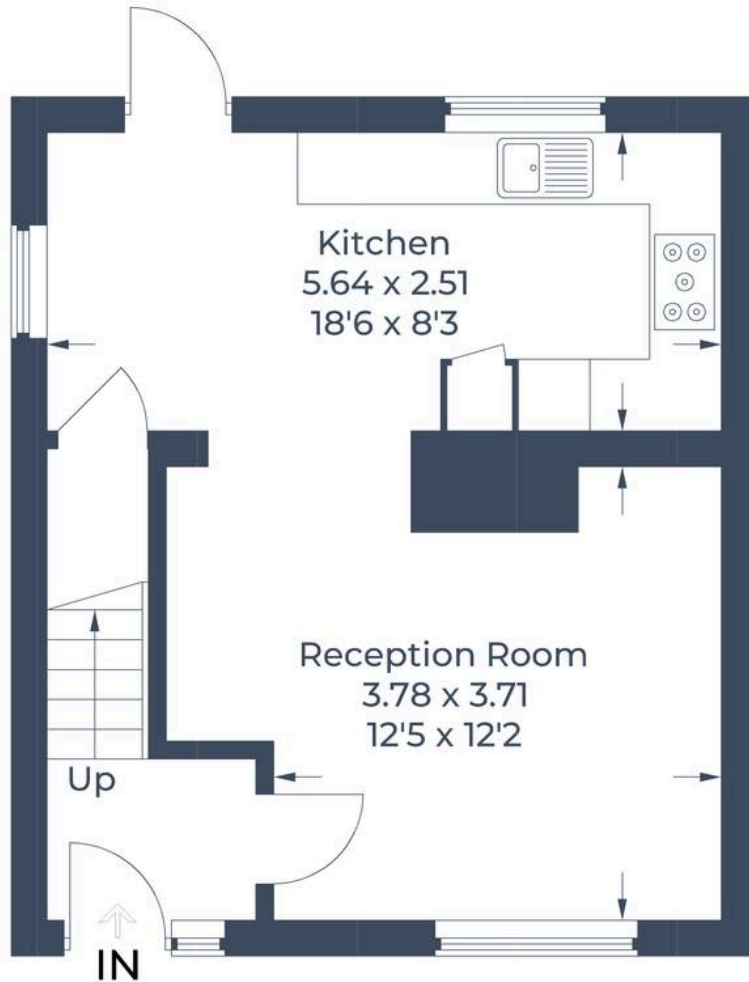




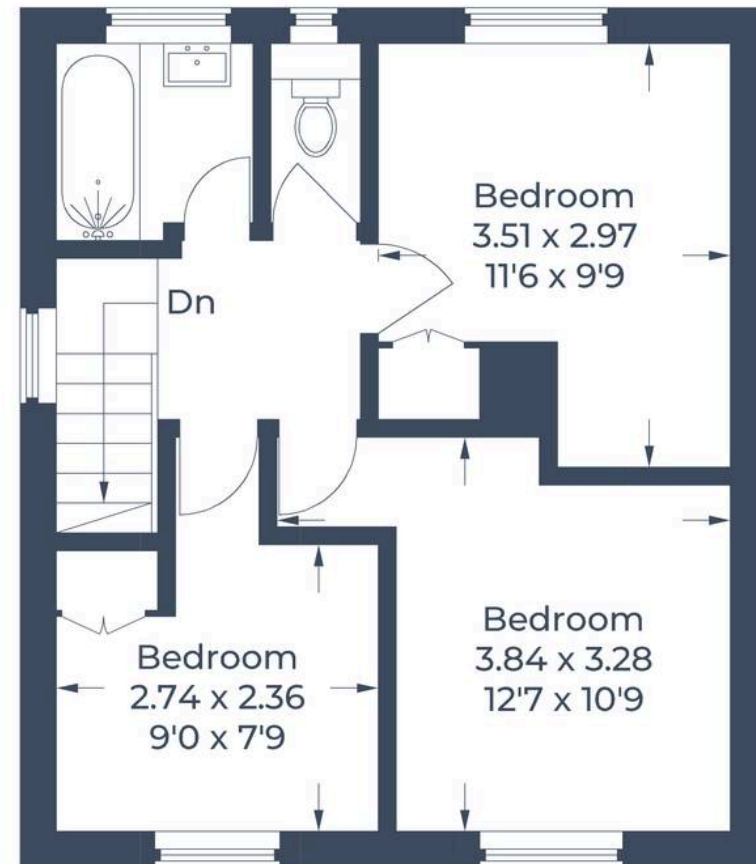




Approximate Gross Internal Area
Ground Floor = 37.6 sq m / 405 sq ft
First Floor = 37.3 sq m / 401 sq ft
Total = 74.9 sq m / 806 sq ft



Ground Floor



First Floor

Illustration for identification purposes only,
measurements are approximate, not to scale.

© CJ Property Marketing Produced for Fairfield Estates





Fairfield – Oxhey

1 Station Approach, Watford – WD19 7DT

020 8428 0540 • rob@fairfieldstates.co.uk • fairfieldstates.co.uk/

We have prepared these particulars as a general guide of the property and they are not intended to constitute part of an offer or contract. We have not carried out a detailed survey of the property and we have not tested any apparatus, fixtures, fittings, or services. All measurements and floorplans are approximate, and photographs are for guidance only. These should not be relied upon for the purchase of carpets or any other fixtures or fittings. Lease details, service