



Hopkins Row, E20

£2,950 Per week

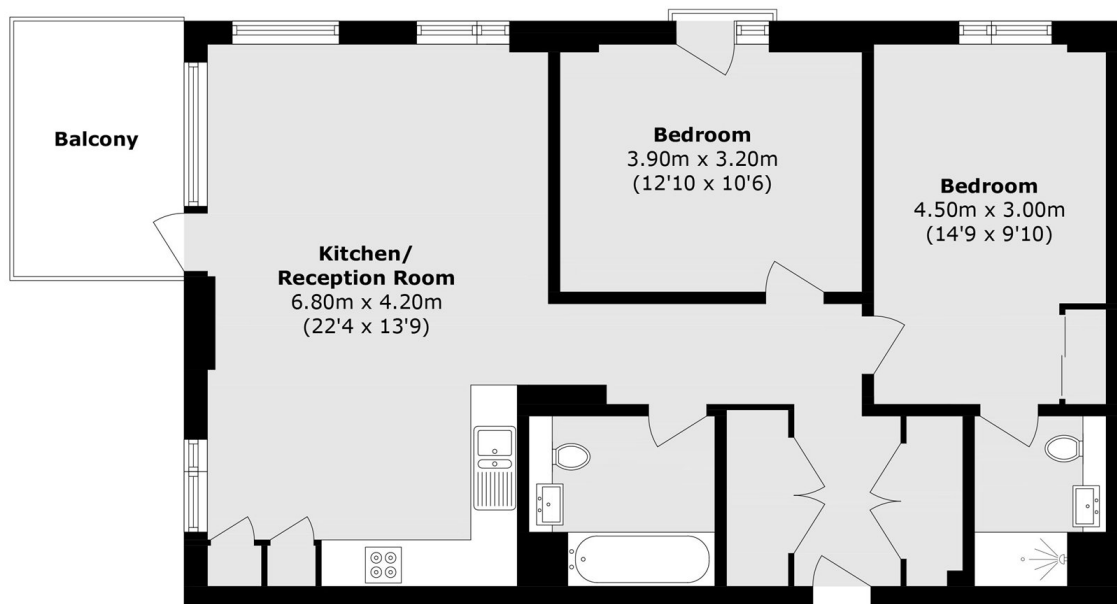
Stunning two-double bedroom, two-bathroom apartment located on the top floor of a brand-new complex in Olympic Village. This bright apartment features floor-to-ceiling windows throughout, open-plan reception area that leads out to a private balcony.

The Olympic Village is a social hub of new build developments almost connected to Westfield shopping centre and Stratford transport links. With internal lakes, play areas, running clubs, residents exercise classes and on-site security team.

Features

- Two Double Bedroom
- Two Bathroom
- Top Floor
- Brand New
- Open Plan
- Skyline Views

Hopkins Row, LONDON, E20



Total area (approx): 79.3 sq. m (853.5 sq. ft)
Balcony area (approx): 7.2 sq. m (77.5 sq. ft)