

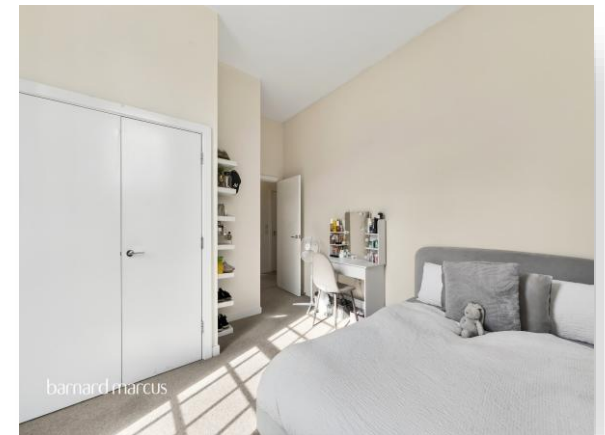


Drummond Court, Dillon Close, Epsom KT19 8GZ

welcome to

Drummond Court, Dillon Close, Epsom

Discover this beautifully presented home in the highly sought-after Noble Park development, tucked away in a peaceful cul-de-sac close to Epsom's vibrant town centre. Offering bright, well-designed living space and the convenience of excellent transport links, shops, parks, and schools.



welcome to

Drummond Court, Dillon Close, Epsom

- Noble Park Development
- First Floor Flat
- Two Double Bedrooms
- Modern Kitchen & Bathroom
- Spacious Light Filled Living / Diner
- Allocated Parking

Tenure: Leasehold EPC Rating: C

Council Tax Band: D Service Charge: Ask Agent

Ground Rent: Ask Agent

This is a Leasehold property. We are awaiting further details about the Term of the lease. For further information please contact the branch. Please note additional fees could be incurred for items such as Leasehold packs.

guide price

£370,000



Please note the marker reflects the postcode not the actual property

view this property online [barnardmarcus.co.uk/Property/EPS110432](https://www.barnardmarcus.co.uk/Property/EPS110432)



Property Ref:
EPS110432 - 0003

1. MONEY LAUNDERING REGULATIONS Intending purchasers will be asked to produce identification documentation at a later stage and we would ask for your co-operation in order that there is no delay in agreeing the sale. 2. These particulars do not constitute part or all of an offer or contract. 3. The measurements indicated are supplied for guidance only and as such must be considered incorrect. Potential buyers are advised to recheck measurements before committing to any expense. 4. We have not tested any apparatus, equipment, fixtures or services and it is in the buyers interest to check the working condition of any appliances. 5. Where an EPC, or a Home Report (Scotland only) is held for this property, it is available for inspection at the branch by appointment. If you require a printed version of a Home Report, you will need to pay a reasonable production charge reflecting printing and other costs. 6. We are not able to offer an opinion either written or verbal on the content of these reports and this must be obtained from your legal representative. 7. Whilst we take care in preparing these reports, a buyer should ensure that his/her legal representative confirms as soon as possible all matters relating to title including the extent and boundaries of the property and other important matters before exchange of contracts.



barnard marcus



01372 740911



Epsom@barnardmarcus.co.uk



2 Kings Shade Walk, The Ashley Centre, Epsom,
Surrey, KT19 8EB



[barnardmarcus.co.uk](https://www.barnardmarcus.co.uk)