

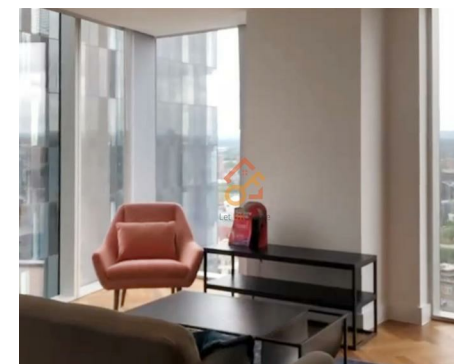
Let **UK** Home

**2 Bedrooms**

**Flat**

**Located  
in Manchester**

**£2,700 Per Month**



[pmadmin@letukhome.co.uk](mailto:pmadmin@letukhome.co.uk)

<https://www.letukhome.co.uk/>

01615219812



# 9 Owen Street Manchester

M15 4UF



Let UK Home are delighted to offer this stunning and spacious two-bedroom apartment in East Tower, part of Manchester's premiere residential address, Deansgate Square.

This property comprises a large bright open plan kitchen and living room, two double bedrooms with wardrobes (master en-suite), a large family sized bathroom and ample storage.

The residents of this development will have access to an efficient concierge service with a cafe for residents to enjoy, state of the art gym, swimming pool, sauna, yoga and fitness studios.

It is only a walking distance from the development to the University of Manchester's North and South campuses, and it is also very convenient to get to Manchester Metropolitan University.

Deansgate Square sits in an enviable location benefitting from all Manchester has to offer. Just off Deansgate Train Station and Metrolink stop, a few minutes walk to Oxford Road Train Station, and the vibrant Spinningfields area, known for its cool bars and restaurants.

Whilst Deansgate offers a host of independent bars, restaurants and shopping, Regent Road retail park is also situated nearby with a large Sainsbury's, TK Maxx, Boots, and much more on offer. For sport and entertainment, Manchester's famous football stadiums Old Trafford (home to Manchester United) and the Etihad (home

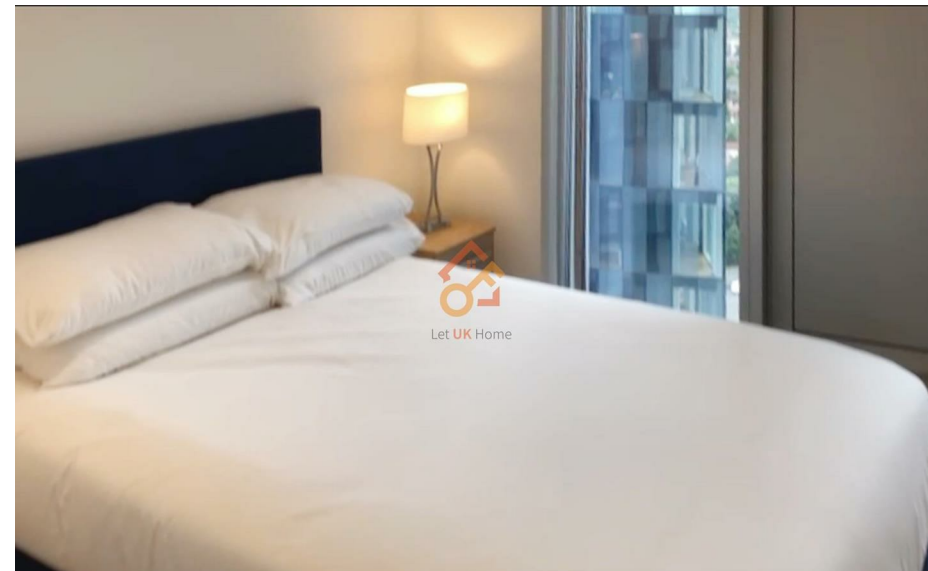
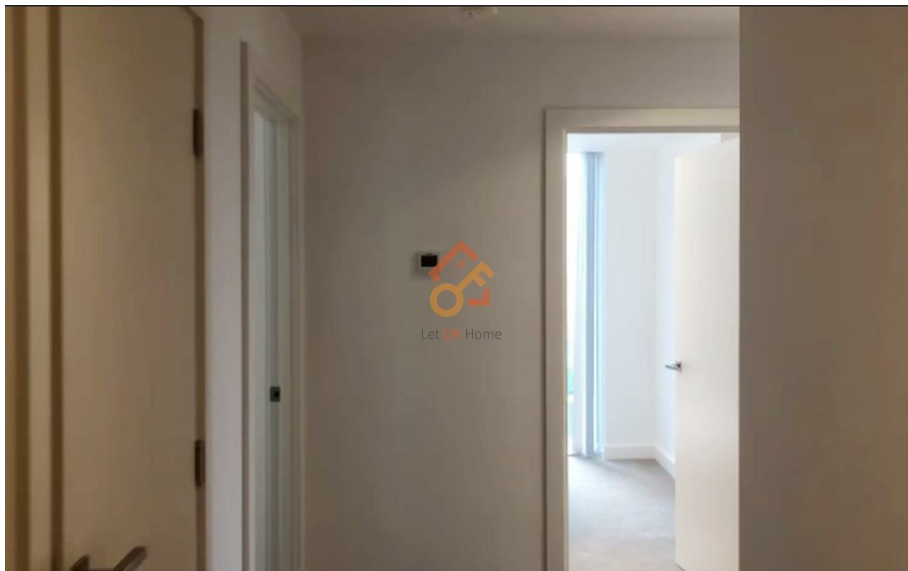
# 9 Owen Street Manchester

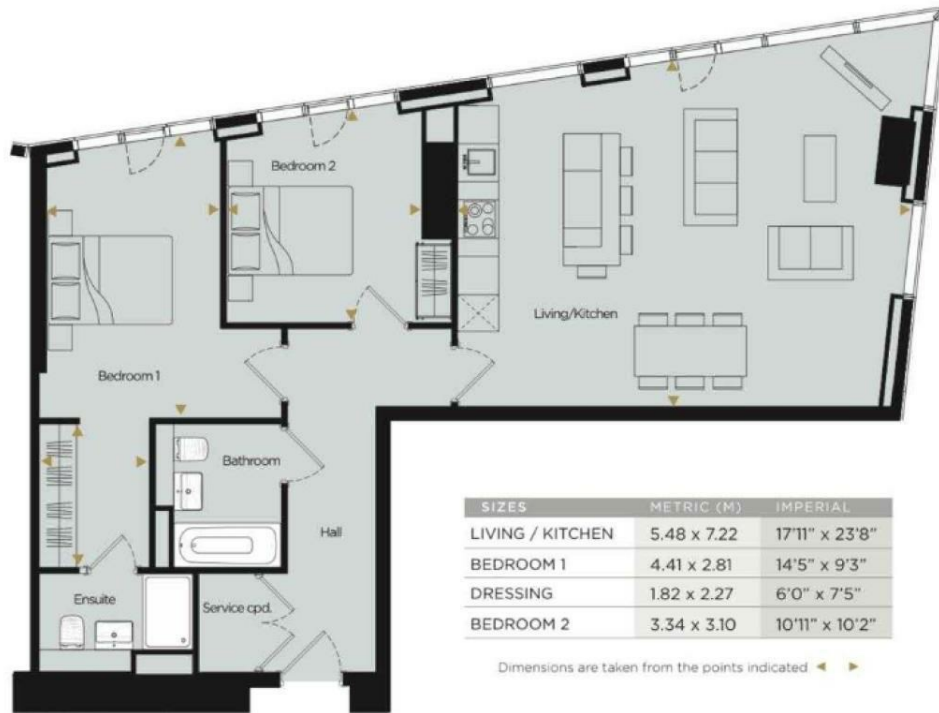
## £2,700 Per Month



- 32nd Floor
- Concierge Service
- Swimming Pool
- Yoga Room

- The Gym
- 24h Security
- Sauna & Steam Room
- EPC Rating: B





**Total floor area**

**89 square metres**



Let **UK** Home

1/F, St James Tower 7 Charlotte Street  
Manchester  
M1 4DZ

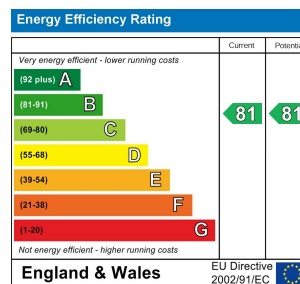
01615219812

[pmadmin@letukhome.co.uk](mailto:pmadmin@letukhome.co.uk)

**Council Tax Band: F**

**Local Authority:**

Agents Note: Whilst every care has been taken to prepare these particulars, they are for guidance purposes only. All measurements are approximate and are for general guidance purposes only and whilst every care has been taken to ensure their accuracy, they should not be relied upon and potential buyers/tenants are advised to recheck the measurements.



<https://www.letukhome.co.uk/>