



ELSHAM ROAD, W14

£10,000 per month

Two Bedrooms
Two Bathrooms
Private Patio
Air Conditioning
Wooden Flooring
Refurbished

@marshandparsons
marshandparsons.co.uk

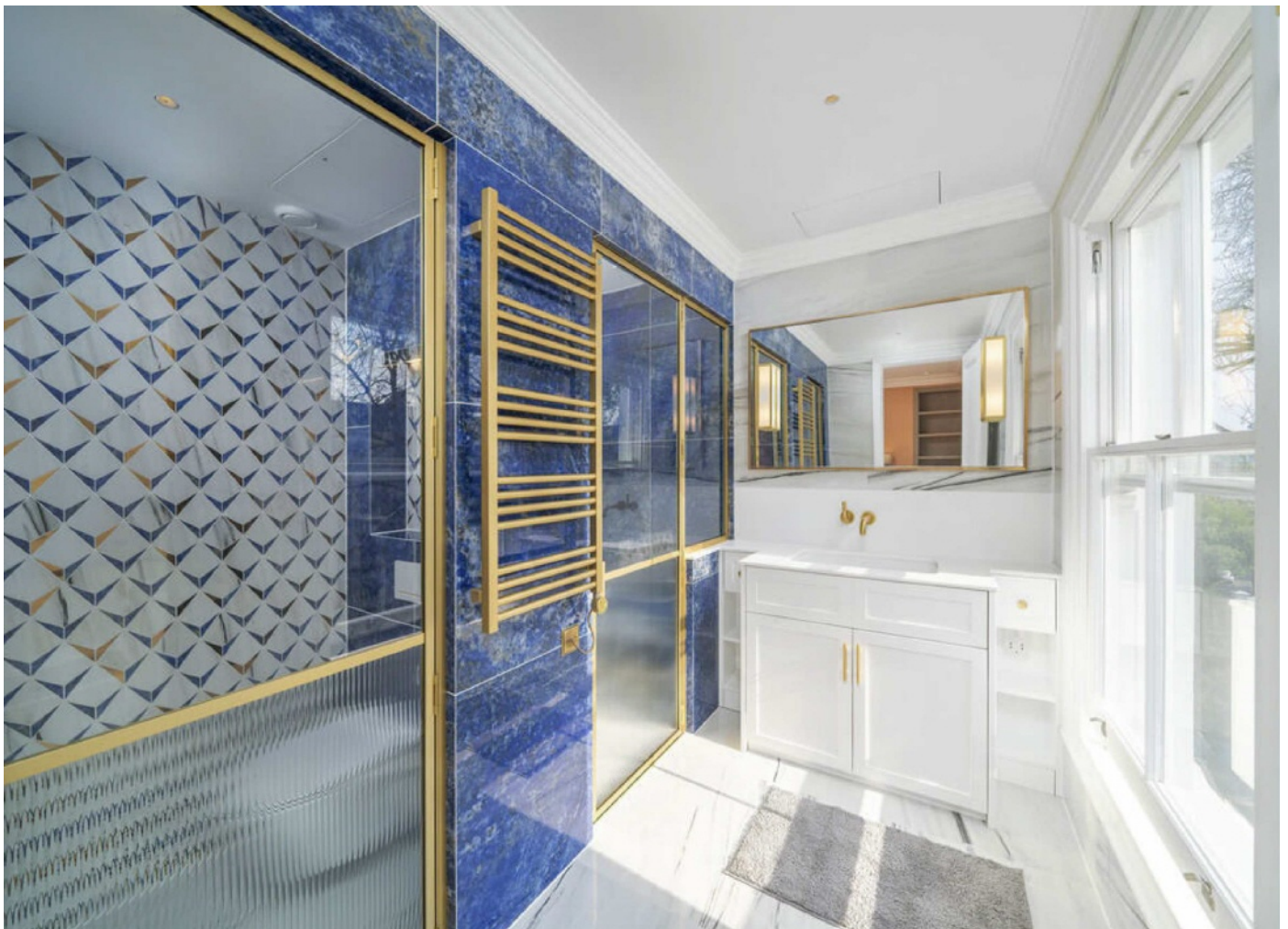
MARSH &
PARSONS



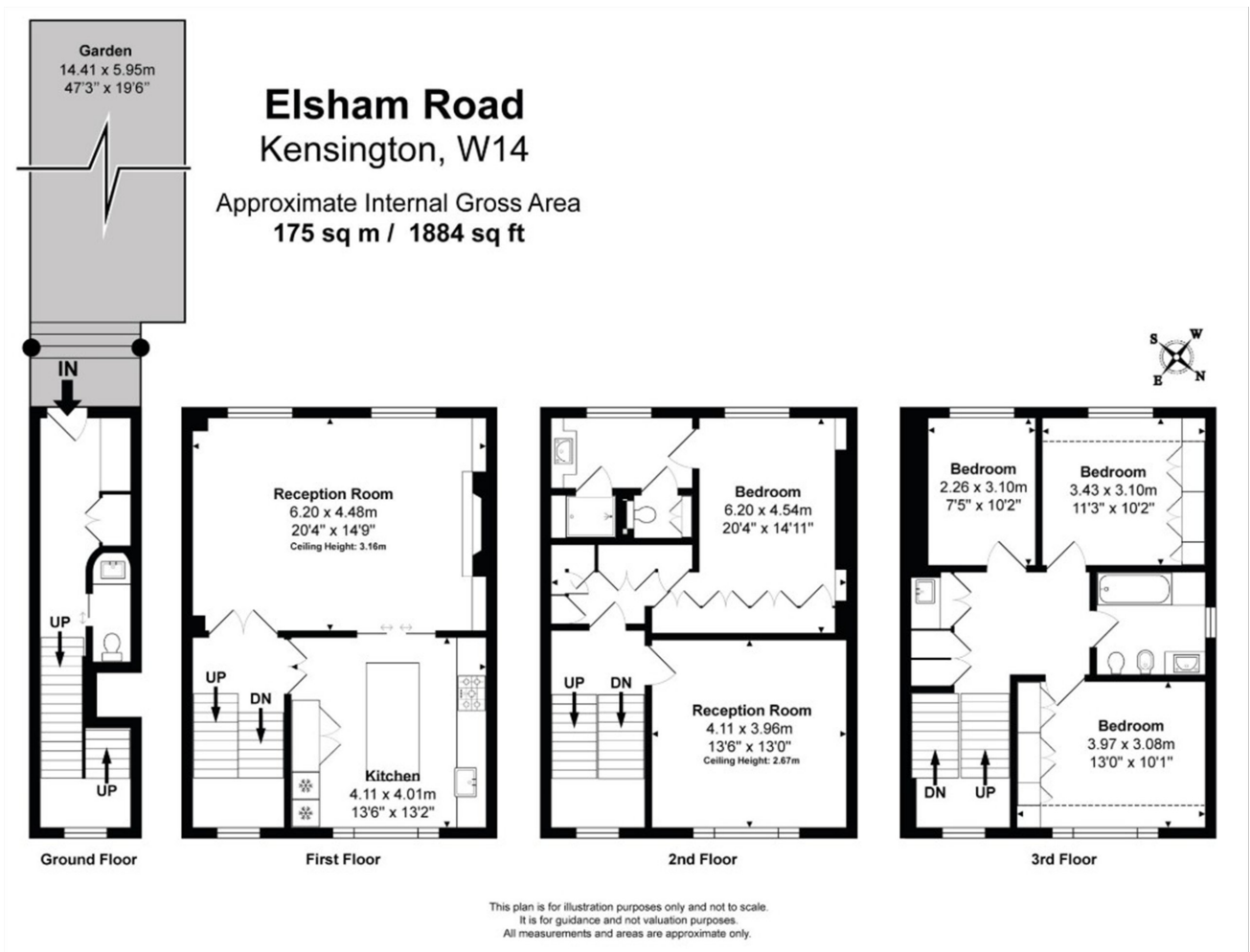
ABOUT THE PROPERTY

A unique, fully refurbished family home presented in pristine condition with bespoke finishes throughout. Arranged over four floors with a private entrance, it features a spacious reception room and bespoke kitchen, a principal bedroom with en-suite and ample storage, plus three further double bedrooms, a study, and a family bathroom. Additional benefits include a west-facing garden, air conditioning throughout.

Elsham Road is popular tree-lined street and is a short walk from the shops, bars and eateries of Holland Park Avenue and Kensington High Street. Transport links include Kensington Olympia Overground Station, Shepherds Bush Central Line/Overground and Holland



STEP INSIDE ELSHAM ROAD



Holland Park
020 7605 6895

Energy Rating: C We aim to make our particulars both accurate and reliable. However, they are not guaranteed; nor do they form part of an offer or contract. If you require clarification on any points then please contact us, especially if you're traveling some distance to view. Please note that appliances and heating systems have not been tested and therefore no warranties can be given as to their good working order

MARSH &
PARSONS