



Unit H, 65 Elsham Road | Holland Park Notting Hill | London | W14 8HA

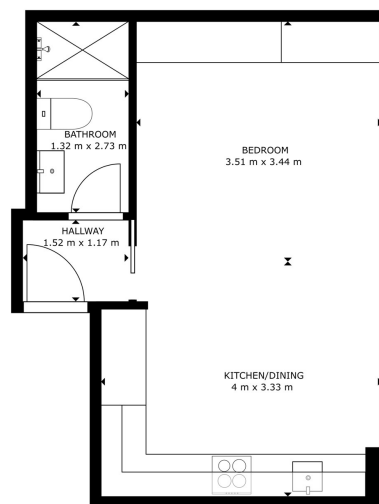
£2,100 PCM

SÉJOUR

**Unit H, 65 Elsham Road
| Holland Park Notting Hill
London | W14 8HA**

Nestled in the charming area of Holland Park, this delightful studio that offers a perfect blend of comfort and convenience. With a well-designed layout, this property features a spacious bedroom area that seamlessly integrates with the living space, making it ideal for both relaxation and entertaining.

- Refurbished studio in Holland Park
- Sleek, modern bathroom fittings
- Fully equipped kitchen with modern appliances
- Bright, airy living space
- Excellent transport links
- Viewing highly recommended



GROSS INTERNAL AREA
FLOOR 1: 20.06 m²
TOTAL: 20.06 m²
SIZES AND DIMENSIONS ARE APPROXIMATE, ACTUAL MAY VARY

Energy Efficiency Rating		Current	Potential
<i>Very energy efficient - lower running costs</i>			
(92 plus) A			
(81-91) B			
(69-80) C			
(55-68) D		61	61
(39-54) E			
(21-38) F			
(1-20) G			
<i>Not energy efficient - higher running costs</i>			
England & Wales		EU Directive 2002/91/EC	

**Council Tax Band D
EPC Rating D**



**10 Cromwell Pl
South Kensington
London
SW7 2JN
020 3865 0611
lettings@cityrelay.com**