



Jordan fishwick

5 Seymour House Tudor Road, SK9 2HB
Guide Price £139,950

Tudor Road Wilmslow SK9 2HB

Guide Price £139,950




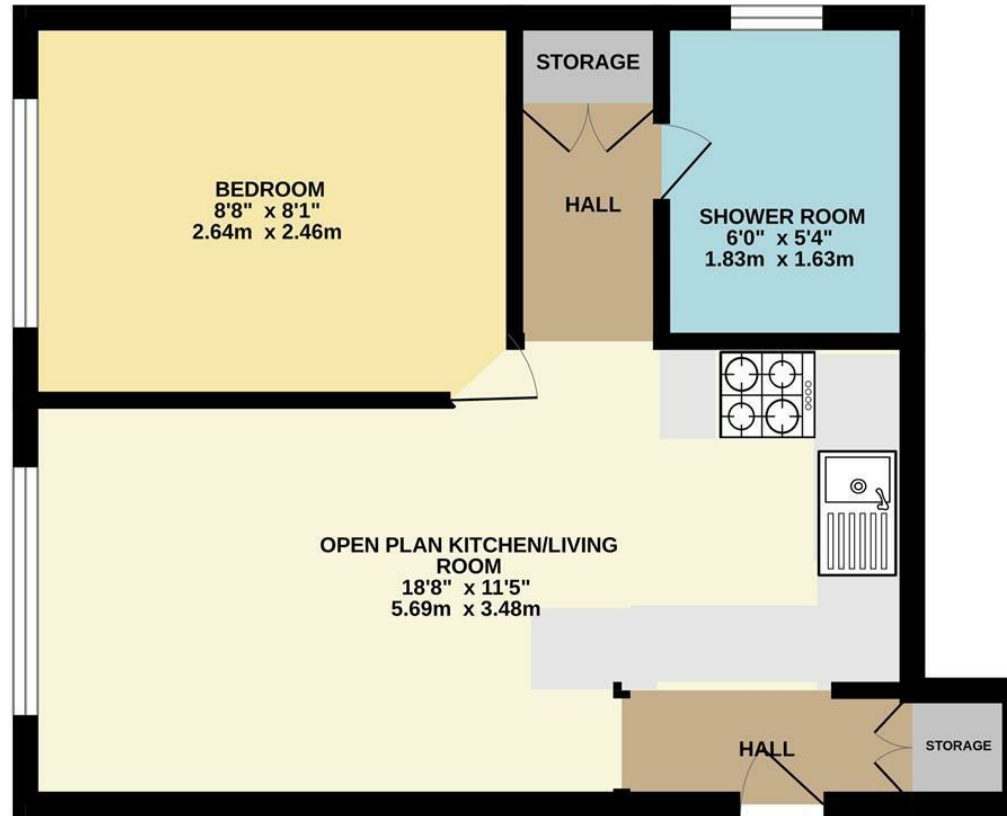
A beautifully presented first floor apartment, discreetly positioned in a quiet cul-de-sac and ideally located for easy access to the A34 bypass and wider motorway network. The accommodation comprises a communal entrance with stairs to the first floor, leading to a private front door. Inside, the apartment offers a bright and spacious open-plan lounge and kitchen area, fully equipped with integrated appliances including a dishwasher, fridge and electric hob and oven. The property further benefits from a well proportioned double bedroom and a modern bathroom featuring a shower cubicle. The property also benefits from ample storage space including space for washer/dryer as well as loft access. This lovely apartment is perfect for professionals seeking modern living in a convenient yet peaceful location. Wilmslow town centre offers a wide range of amenities, which include a number of local shopping facilities, bars and restaurants. Wilmslow train station offers a direct service to London Euston and Manchester City centre and the location caters for many different needs. The property is well placed for easy access to the M56 and A34 for commuters to Manchester and the North West commercial centres and Manchester Airport is less than 20 minutes away. The property is perfect for first time buyers, investors and those buyers looking to downsize.



- Stunning One Bedroom Apartment
- Parking to the rear
- Modern Kitchen
- First floor
- Stylish Shower room
- Loft space for extra storage
- Gas Fired Central Heating



Energy Efficiency Rating		
	Current	Potential
Very energy efficient - lower running costs		
(92 plus) A		
(81-91) B		
(69-80) C	72	74
(55-68) D		
(39-54) E		
(21-38) F		
(1-20) G		
Not energy efficient - higher running costs		
England & Wales	EU Directive 2002/91/EC 	



Measurements are approximate. Not to scale. Illustrative purposes only.
Made with Metropix ©2026



These particulars are believed to be accurate but they are not guaranteed and do not form a contract. Neither Jordan Fishwick nor the vendor or lessor accept any responsibility in respect of these particulars, which are not intended to be statements or representations of fact and any intending purchaser or lessee must satisfy himself by inspection or otherwise as to the correctness of each of the statements contained in these particulars. Any floorplans on this brochure are for illustrative purposes only and are not necessarily to scale.

Offices at: Chorlton, Didsbury, Disley, Hale, Glossop, Macclesfield, Manchester Deansgate, Manchester Whitworth Street, New Mills, Sale, Wilmslow and Withington

36-38 Alderley Road, Wilmslow SK91JX
01625 532000

wilmslow@jordanfishwick.co.uk
www.jordanfishwick.co.uk