



**Guide Price**  
**£390,000**

**Freehold**

3x  2x  2x 

**Grenville Gardens,  
Chichester, West  
Sussex, PO19**

**OVER 60?**

Secure this property  
for up to **59% less!**

**cubitt & west**  
Helping you move forwards



## Main features

- Spacious family home in desirable location
- Integral garage and driveway
- Flexible accommodation with ample storage
- Quite, Cul-de-sac location
- Short walk to Chichester city centre, close to shops and bus route

## Accommodation

### GROUND FLOOR

Entrance Hall  
 Living Area: 14'8 x 12'4 (4.47m x 3.76m)  
 Dining Area: 11'3 x 8'0 (3.43m x 2.44m)  
 Kitchen: 16'2 x 7'1 (4.93m x 2.16m)  
 Conservatory: 15'5 x 10'4 (4.70m x 3.15m)  
 WC

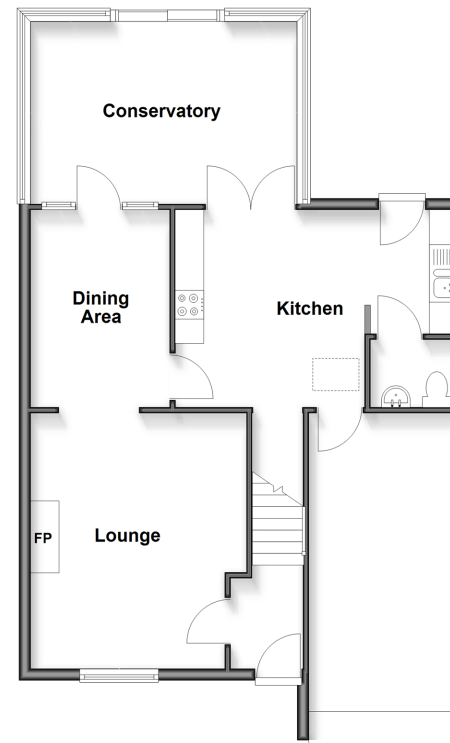
### FIRST FLOOR

Landing  
 Bedroom 1: 12'2 x 8'0 (3.71m x 2.44m)  
 En Suite  
 Bedroom 2: 11'8 x 9'1 (3.56m x 2.77m)  
 Bedroom 3: 8'7 x 8'7 (2.62m x 2.62m)  
 Bathroom

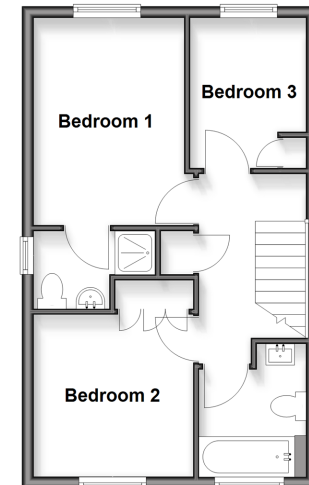
### OUTSIDE

Integral Garage  
 Driveway  
 Rear Garden

**Ground Floor**  
 Approx. 77.6 sq. metres (835.6 sq. feet)



**First Floor**  
 Approx. 38.1 sq. metres (409.7 sq. feet)



Call Chichester - 01243 786581 ■ [cubittandwest.co.uk](http://cubittandwest.co.uk)

■ Through a Homewise Home For Life Plan people aged 60+ can secure this property for up to 59% less, by purchasing a Lifetime Lease



40415727/20260321/JH/JH