

SNELLERS

ESTATE AGENTS



Nelson Road, TW3

£2,475 PCM

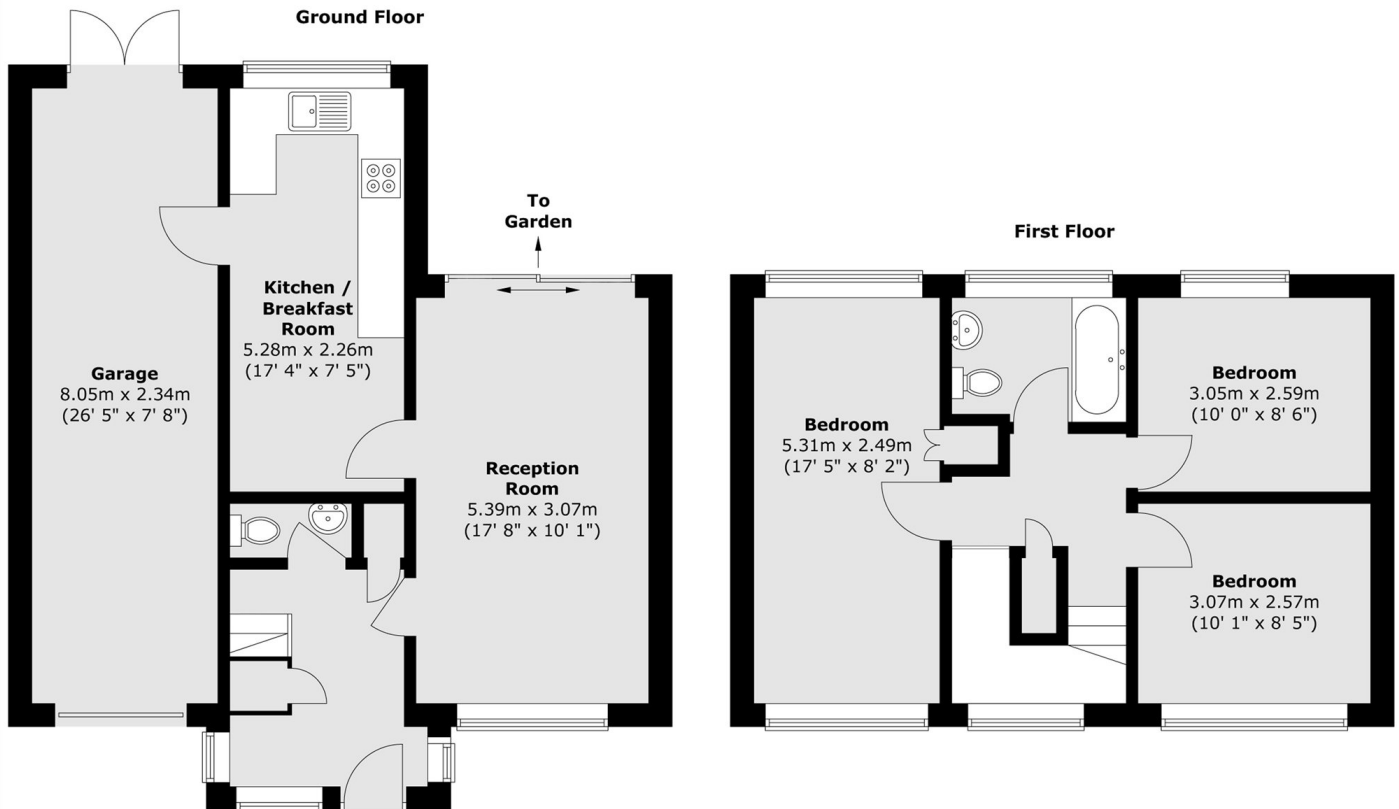
A beautiful family home offering bright, modern living space throughout. Downstairs, there is a spacious reception room, a well-equipped kitchen, and the added convenience of a downstairs w.c. Upstairs there is a modern bathroom and three double bedrooms. Further benefits include a private garage and off-street parking.

The property is located on Nelson Road within walking distance of Whitton High Street and just 0.9 Miles to Whitton Station for fast trains into London Waterloo.

- Three Bedrooms • Bathroom & W.C • Recently Redecorated •
- Private Garage & OSP • Off street parking • Private Garden •

SNELLERS

ESTATE AGENTS



Total area (approx.) : 102.8 sq. m (1106 sq. ft)
(Including garage)

Snellers Twickenham Lettings
64-66 Heath Road
Twickenham
TW1 4BX
020 8892 5678
twickenhamlettings@snellers.co.uk

Energy Rating: D We aim to make our particulars both accurate and reliable. However they are not guaranteed; nor do they form part of an offer or contract. If you require clarification on any points then please contact us, especially if you're traveling some distance to view. Please note that appliances and heating systems have not been tested and therefore no warranties can be given as to their good working order