



STEPHENSON BROWNE

Moreton Parade, MayBank, Newcastle

ST5 0JD



£240,000

DESCRIPTION

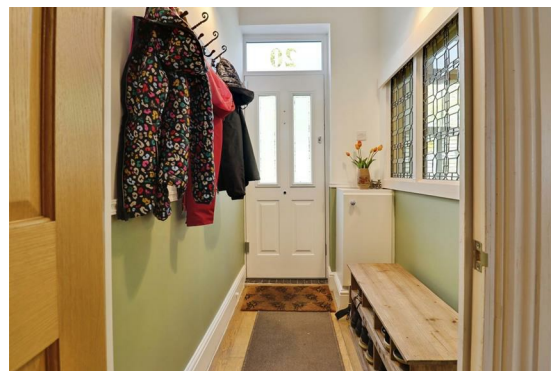
Beautifully presented period townhouse overlooking May Bank Marsh, ideally positioned for Newcastle-under-Lyme town centre, the A500 road network, and nearby schools. Moreton Parade has been lovingly maintained and restored to ooze charm, character, and warmth throughout, with features including high ceilings, original stained glass windows, cast iron fireplaces, solid oak flooring, and private courtyard spaces to both the front and rear.

The rear gated courtyard previously provided off-road parking as well as a seating area and could easily be reverted if desired, while the front courtyard offers an attractive approach to the property. There are also plenty of nearby parking options available.

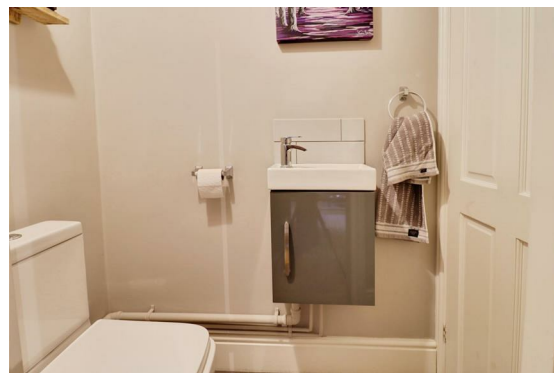
Entering through the enclosed entrance hall, you are immediately welcomed by beautiful stained glass windows that set the tone for the character found throughout. The spacious open-plan living/dining room is bright and inviting, featuring a bay window to the front, a cosy log burner in the lounge area, and a further feature fireplace within the dining space. The dining area also provides access to the downstairs W.C. and useful understairs storage.

To the rear is the kitchen, leading through to a generous utility room offering excellent additional storage and workspace, with access to the rear courtyard from both the utility and dining area.

To the first floor are three well-proportioned double bedrooms, with bedroom one benefiting from built-in wardrobes, alongside a beautifully re-fitted family bathroom. The landing also features a useful airing cupboard for additional storage.



Early viewings are highly recommended to fully appreciate everything this fantastic home has to offer.



ROOM DESCRIPTIONS

Ground Floor

Entrance Hall

4'3" x 6'1"

Living/Dining Room

14'2" x 29'0"

W.C.

5'0" x 3'0"

Understairs Storage

Kitchen

8'10" x 13'1"

Utility Room

8'6" x 7'4"

First Floor

Bedroom One

12'4" x 14'3"

Bedroom Two

13'3" x 8'3"

Bedroom Three

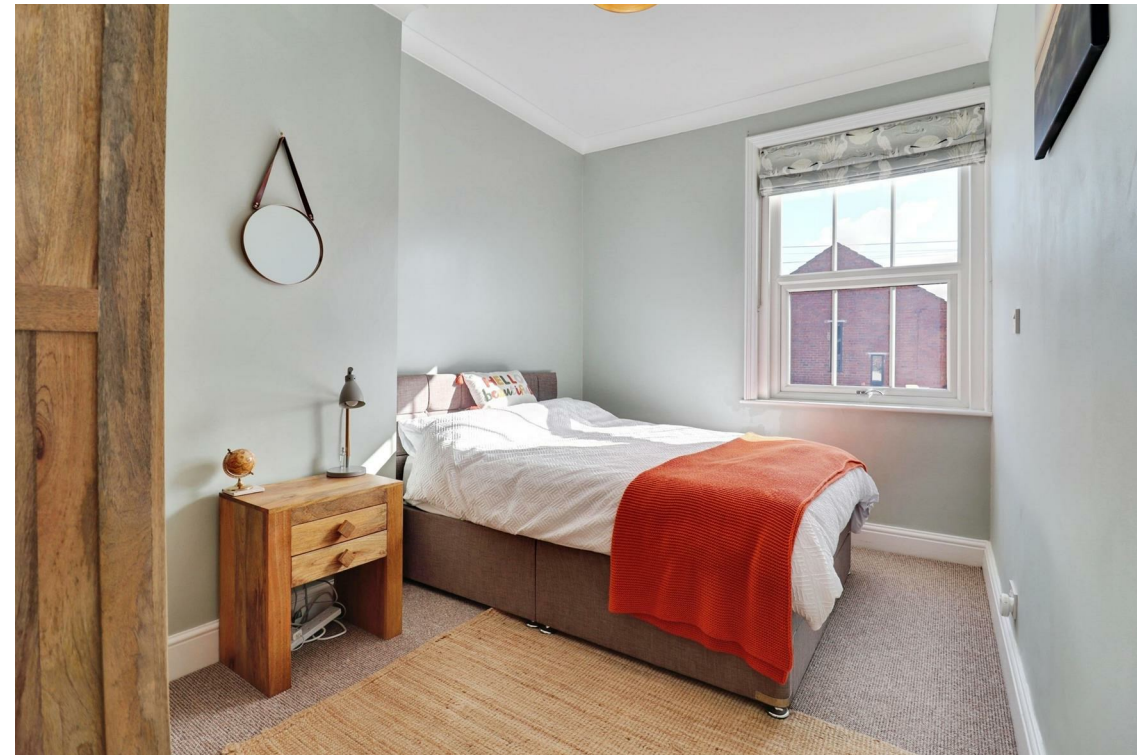
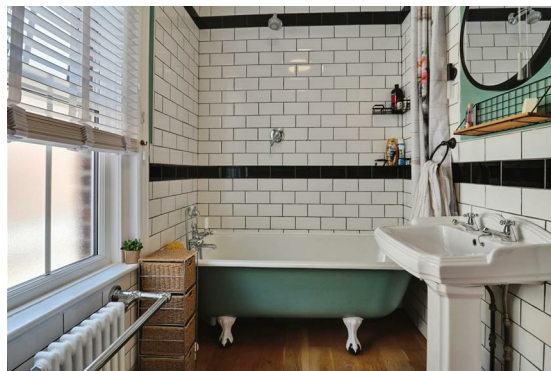
8'5" x 12'10"

Bathroom

8'1" x 5'4"

Stephenson Browne AML Disclosure

Agents are required by law to conduct Anti-Money Laundering checks on all those buying a property. Stephenson Browne charge £49.99 plus VAT for an AML check per purchase transaction. This is a non-refundable fee. The charges cover the cost of obtaining relevant data, any manual checks that are required, and ongoing monitoring. This fee is payable in advance prior to the issuing of a memorandum of sale on the property you are seeking to buy.



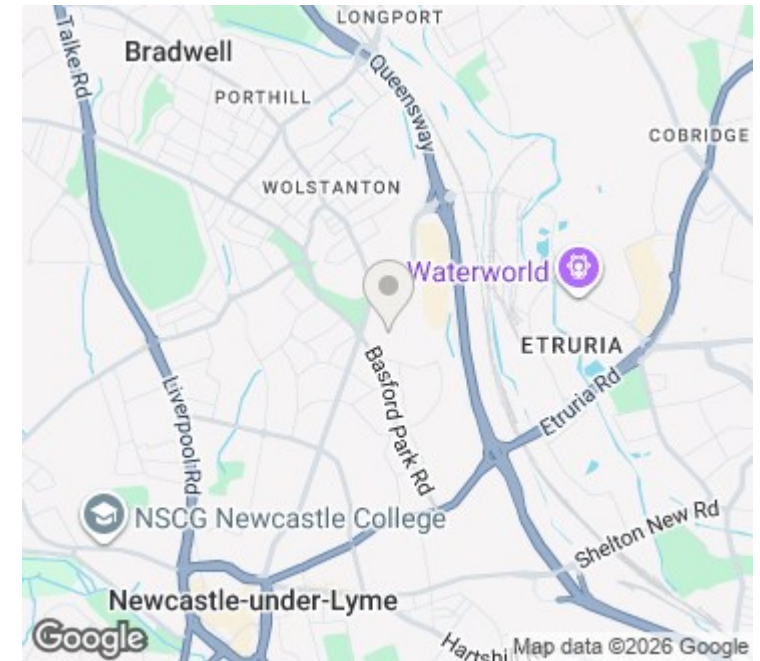


Floorplans

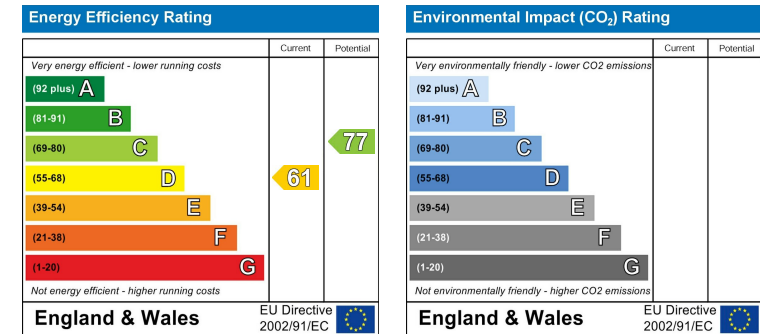


Whilst every attempt has been made to ensure the accuracy of the floorplan contained here, measurements of doors, windows, rooms and any other items are approximate and no responsibility is taken for any error, omission or mis-statement. This plan is for illustrative purposes only and should be used as such by any prospective purchaser. The services, systems and appliances shown here are not been tested and no guarantee as to their operability or efficiency can be given. Made with Monopix ©2025.

Area Map



EPC Rating



Viewing

Please contact our office using the details provided on the final page if you are interested in booking a viewing or require further information. 01782 625734

NOTICE: Stephenson Browne for themselves and for the vendors or lessors of this property whose agents they are give notice that: (1) the particulars are set out as a general guideline only for the guidance of intending purchasers or lessees, and do not constitute, nor constitute part of, an offer or contract; (2) all descriptions, dimensions, references to condition and necessary permissions for use and occupation, and other details are given in good faith and are believed to be correct but any intending purchasers or tenants should not rely on them as statements or representations of fact but must satisfy themselves by inspection or otherwise as to the correctness of each theme; (3) no person in the employment of Stephenson Browne has any authority to make representation or warranty whatever in relation to this property. (4) fixtures & fittings are subject to a formal list supplied by the vendors solicitors. Referring to: Move with Us Ltd Average Fee: £123.64

T: 01782 625734 E: newcastle@stephensonbrowne.co.uk

www.stephensonbrowne.co.uk