



Long Buftlers

Harpenden, AL5 1JF

Well presented, detached family home of over 2,400 sq ft with spacious living areas and a fabulous large home office/garden room. The property has a double garage, plenty of off-street parking and a superb mature garden of over 200ft. Situated in a peaceful location, moments from open countryside, close to the amenities of Southdown and within easy reach of Harpenden town centre and station.

Guide price £1,400,000

Long Buftlers

Harpenden, AL5 1JF



- Fabulous detached family home circa 2,400 sq ft
- Spacious home including large garden room
- Principal bedroom with dressing room and en-suite
- Superb mature garden over 200ft
- Peaceful location, moments from open countryside
- Within easy reach of Harpenden town centre and station
- Double garage and off-street parking
- Easy access to the amenities of Southdown
- Council Tax Band D

Entrance Hall

Cloakroom/Utility Room

Living Room

26'2" x 15'4" (7.98m x 4.69m)

Family Room

14'0" x 11'0" (4.27m x 3.36m)

Kitchen/Breakfast Room

21'3" x 16'6" (6.48m x 5.03m)

Study

7'10" x 7'8" (2.41m x 2.34m)

Bedroom One

13'11" x 11'1" (4.25m x 3.38m)

Dressing Room

En-suite Bath and Shower Room

Bedroom Two

16'4" x 11'11" (5m x 3.64m)

Bedroom Three

15'2" x 9'11" (4.63m x 3.04m)

Bedroom Four

11'6" x 10'4" (3.52m x 3.17m)

Bathroom

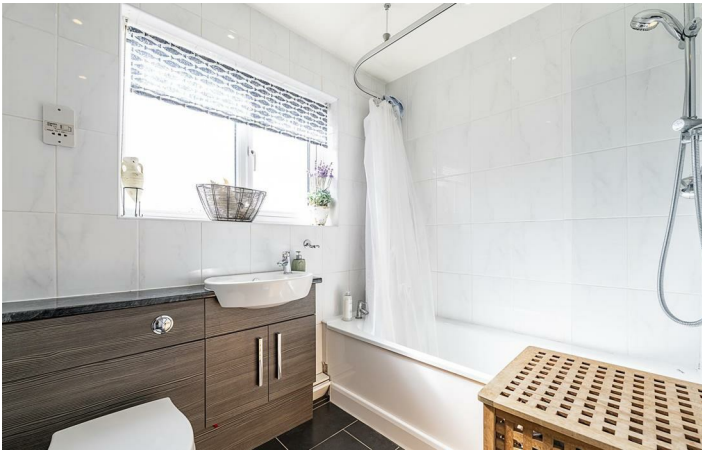
Integral Double Garage

18'11" x 17'2" (5.77m x 5.24m)

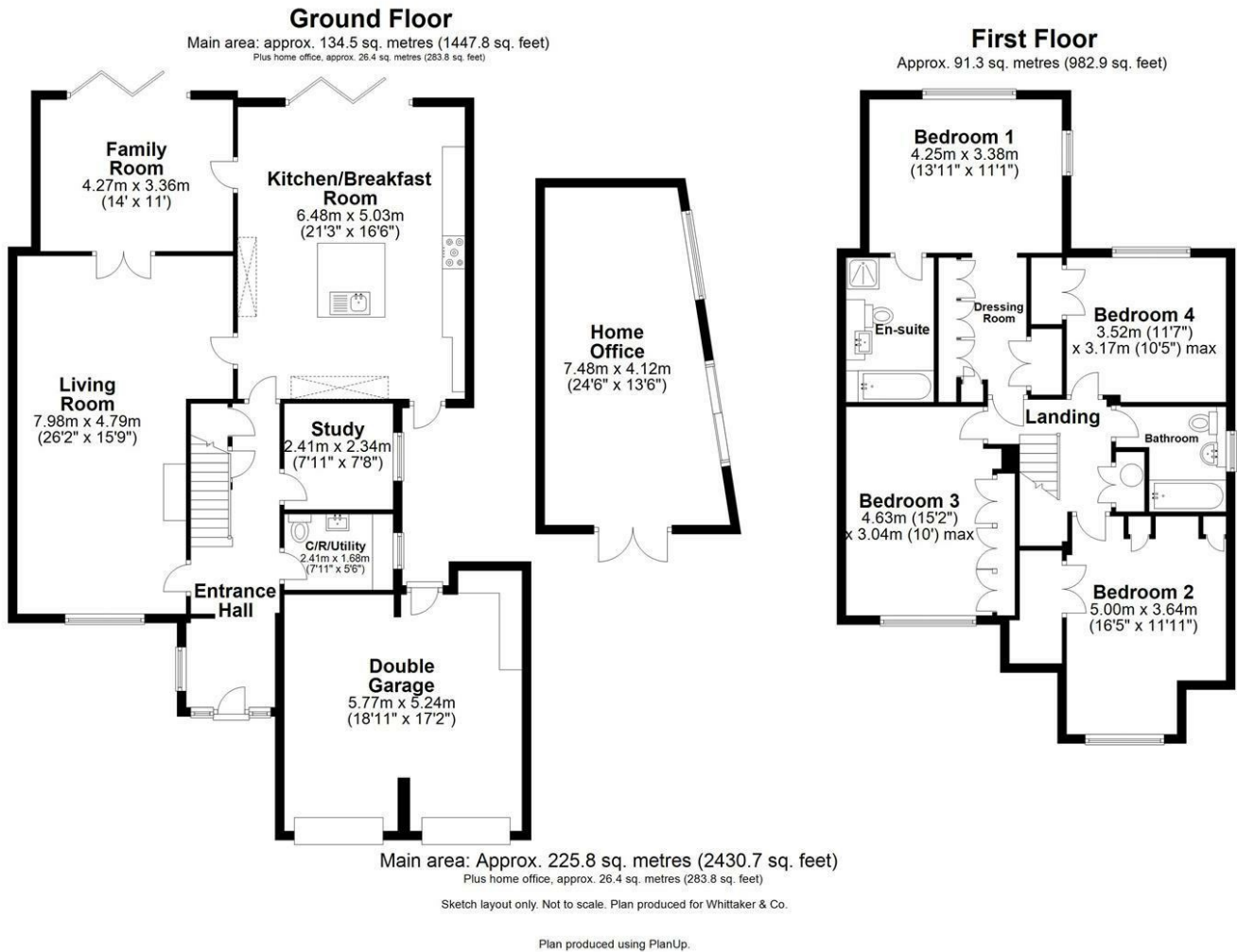
Home Office

24'6" x 13'6" (7.48m x 4.12m)





Floor Plan



These particulars, whilst believed to be accurate are set out as a general outline only for guidance and do not constitute any part of an offer or contract. Intending purchasers should not rely on them as statements of representation of fact, but must satisfy themselves by inspection or otherwise as to their accuracy. No person in this firm's employment has the authority to make or give any representation or warranty in respect of the property.

