



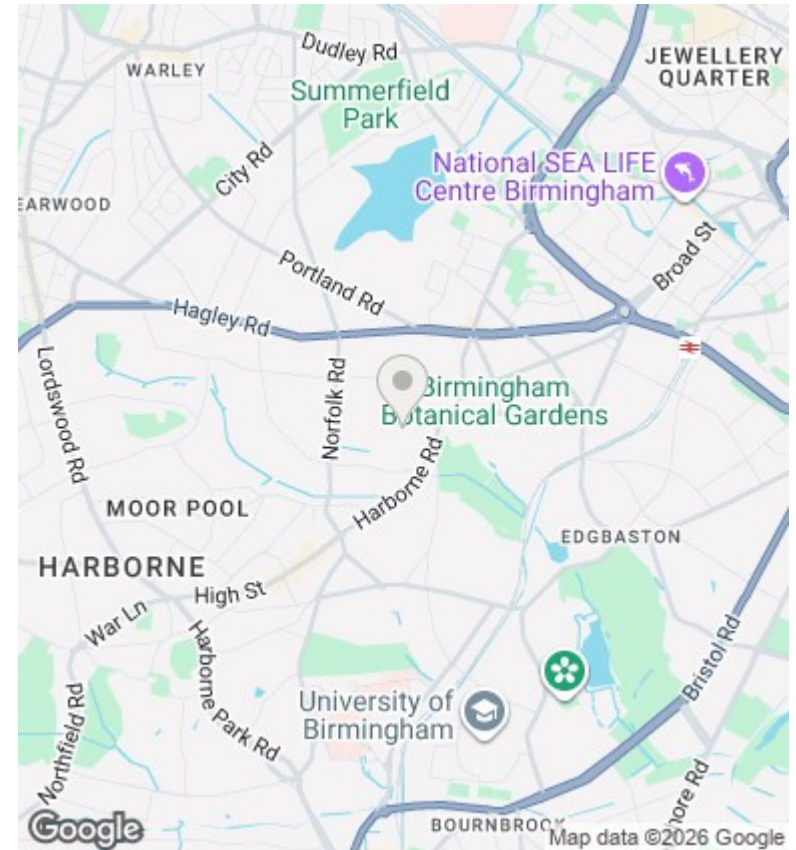
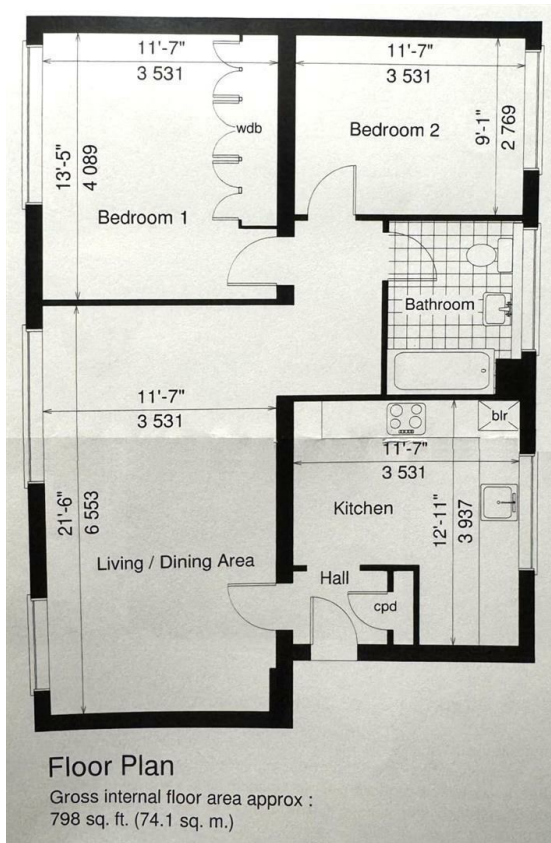
PERFECT PILLARS
Supporting You



Flat 23, Wilsford Green, 2 Oak Hill Drive, Birmingham, B15

£188,000

- Second floor, purpose-built block
- Separated garage included
- Close to local amenities
- Communal entrance hall with security phone system
- Long lease
- Regular transport services to Birmingham city centre



Directions

Viewings

Viewings by arrangement only. Call 01183 048821 to make an appointment.

Council Tax Band

C

EPC Rating:

Energy Efficiency Rating		Current	Potential
<i>Very energy efficient - lower running costs</i>			
(92 plus) A			
(81-91) B			
(69-80) C			
(55-68) D			
(39-54) E			
(21-38) F			
(1-20) G			
<i>Not energy efficient - higher running costs</i>			
England & Wales	EU Directive 2002/91/EC		