



Depedene Southampton Road, Dibden  
£775,000



ANTHONY JAMES  
PROPERTIES



# Depedene Southampton Road

Dibden, Southampton

Set in an elevated, lightly wooded position that commands sweeping views over the neighbouring countryside and towards the distant Southampton Water, this exceptional three bedroom detached bungalow presents a rare opportunity to acquire a home of true character in a private, edge-of-village setting. The property, it's origin of which pre-dates the 1940's as a large manor house was thoughtfully re-built after sustaining damage during World War II, has been extensively modernised and refurbished by the current owners to create a harmonious blend of period charm and contemporary comfort.

The spacious accommodation, extending to approximately 2,259 square feet, is introduced by a wide, naturally illuminated dining hall that flows seamlessly into a splendid sitting room, where expansive windows frame the picturesque outlook and fill the space with natural light.

Council Tax band: G

Tenure: Freehold



**1 Southward House**  
Dibden Purlieu SO45 4PT

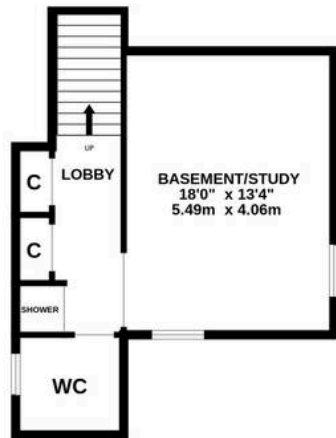


**T: 02380 844405**

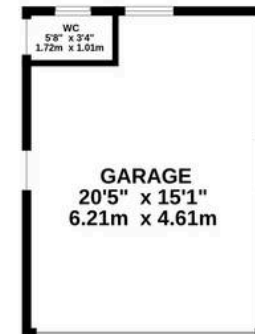
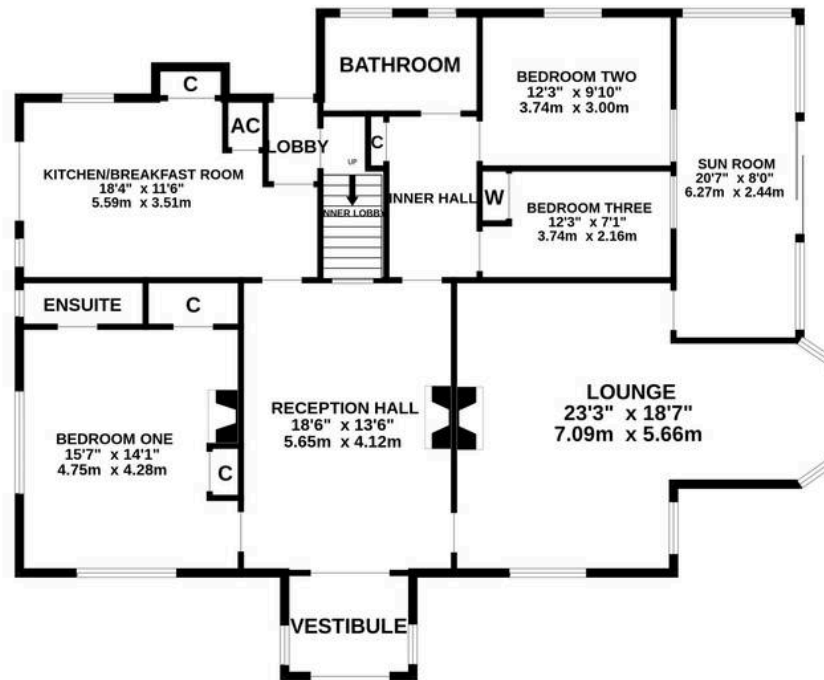
[info@anthonyjamesproperties.co.uk](mailto:info@anthonyjamesproperties.co.uk)



BASEMENT



GROUND FLOOR



Whilst every attempt has been made to ensure the accuracy of the floorplan contained here, measurements of doors, windows, rooms and any other items are approximate and no responsibility is taken for any error, omission or mis-statement. This plan is for illustrative purposes only and should be used as such by any prospective purchaser. The services, systems and appliances shown have not been tested and no guarantee as to their operability or efficiency can be given.  
 Made with Metropix ©2026