

10, Le Jardin Station Road,

Guide Price £270,000

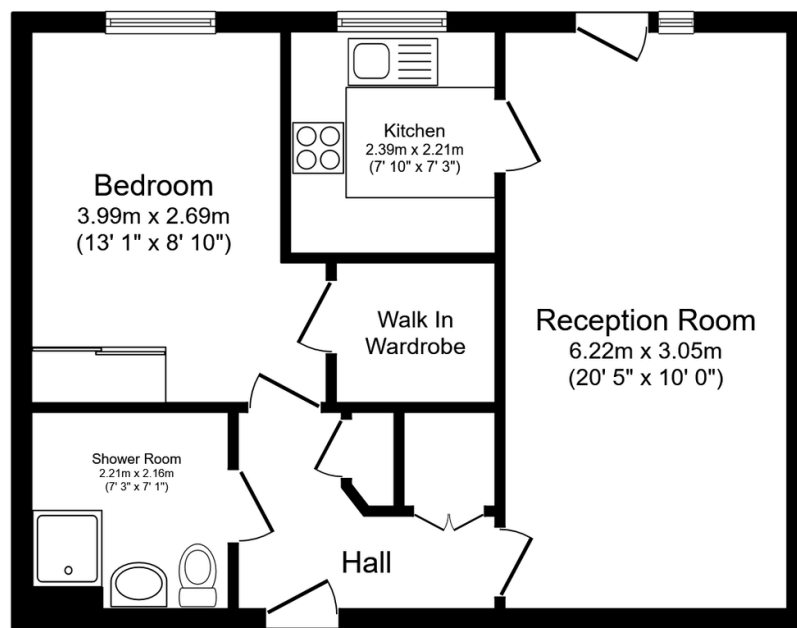
1 1 1



An immaculately presented and beautifully modern one bedroom retirement apartment, ideally positioned in the very heart of Letchworth Garden City. Built by the highly regarded McCarthy and Stone, this stylish home offers comfort, security, and a wonderfully welcoming community lifestyle.

Key Features

- Immaculately presented one bedroom retirement apartment
- Prime central Letchworth Garden City location
- Spacious double bedroom with walk in wardrobe
- Energy Performance Certificate rating B
- On site House Manager available weekdays
- Built by the award winning McCarthy and Stone
- Modern kitchen and contemporary finishes throughout
- Allocated parking
- Friendly and welcoming community with regular activities
- Must see video tour



First Floor

Floor area 50.7 sq.m. (546 sq.ft.)

Total floor area: 50.7 sq.m. (546 sq.ft.)

This floor plan is for illustrative purposes only. It is not drawn to scale. Any measurements, floor areas (including any total floor area), openings and orientations are approximate. No details are guaranteed, they cannot be relied upon for any purpose and do not form any part of any agreement. No liability is taken for any error, omission or misstatement. A party must rely upon its own inspection(s). Powered by www.Propertybox.io