



10 Coulon Close | Irchester | NN29 7UW



Matthew  
Nicholas



## Offers In The Region Of £330,000

A nicely located three bedroom detached family home in this sought after small development offered with no onward chain. Offering c.1100sq' of space over two floors, the property enjoys a gas fired radiator heating system, PVCu double glazing and a delightful south facing garden. Comprising a hallway, sitting room, dining room leading to the kitchen, rear lobby and guest WC. The garage has been partially converted to a study with storage area to the front. The landing leads to three well proportioned bedrooms, one with an ensuite, and a family bathroom. Viewing is recommended.

- Detached family home on sought after cul-de-sac
- Neutral decoration
- Useful partial conversion of garage into office
- South facing plot
- Refitted kitchen
- No chain

Storm porch with part glazed composite door leading from the front into the

### **Hallway**

Radiator, laminate flooring, staircase to the first floor, door leading to the

### **Sitting Room**

11'3" x 16'1" (3.45m x 4.91m)

Bay window to the front, two radiators, feature period style fire surround with marble effect inset, coving, laminate flooring. Glazed double doors to the

### **Dining Room**

8'10" x 9'0" (2.70m x 2.76m)

Sliding patio doors to the rear garden, radiator, coving, laminate flooring. Door to the

### **Kitchen**

10'2" x 8'10" (3.12m x 2.71m)

Recently refitted with a range of base and eye level cupboards with shaker style grey fronts, worksurfaces above. inset stainless steel sink with mixer tap, space for dishwasher/washing machine etc under counter, tiled splash area, replacement flooring (including lobby and WC)s. Doors to understairs store, rear lobby and window to rear.

### **Lobby**

Part glazed door to the side, doors to the WC and office/store.

### **WC**

Fitted with a two piece suite comprising a low level wc and wash hand basin, tiled splash areas, window to rear.

### **Office/Store**

7'10" x 7'4" (2.41m x 2.24m)

Wall mounted gas fired boiler.

### **First Floor Landing**

Loft access, doors to all bedrooms and bathroom.

### **Bedroom One**

11'5" x 12'0" (3.50m x 3.68m)

Window to front, radiator, built in wardrobes, door to the

### **Ensuite**

Fitted with a three piece suite comprising a low level wc, wash hand basin and tiled shower cubicle with glazed doors. Tiled splash areas, radiator, expel air, window to front.

### **Bedroom Two**

7'10" x 17'11" (2.39m x 5.48m)

Windows to front and rear, two radiators, laminate flooring.

### **Bedroom Three**

7'5" x 9'1" (2.28m x 2.78m)

Window to rear, radiator.

### **Bathroom**

Fitted with a three piece suite comprising a low level wc, wash hand basin and bath with electric shower and glazed screen above. Tiled splash areas, radiator, expel air, window to rear.

### **Outside**

The front and side gardens are laid to an open plan lawn with established shrubbery and single width driveway for one car. the driveway leads to the main door and also the remaining garage/store. gated access to the side via a timber gate.

### **Store (former garage)**

8'8" x 9'0" (2.65m x 2.75m)

### **Rear Garden**

A lovely south facing garden enjoying a central lawn, established shrubbery to the borders and patio area immediately to the rear of the house.

### **Material Information**

Electricity Supply: Mains

Gas Supply: Mains

Water Supply: Mains (Metered or Rateable)

Sewerage: Mains

Heating: Gas radiators

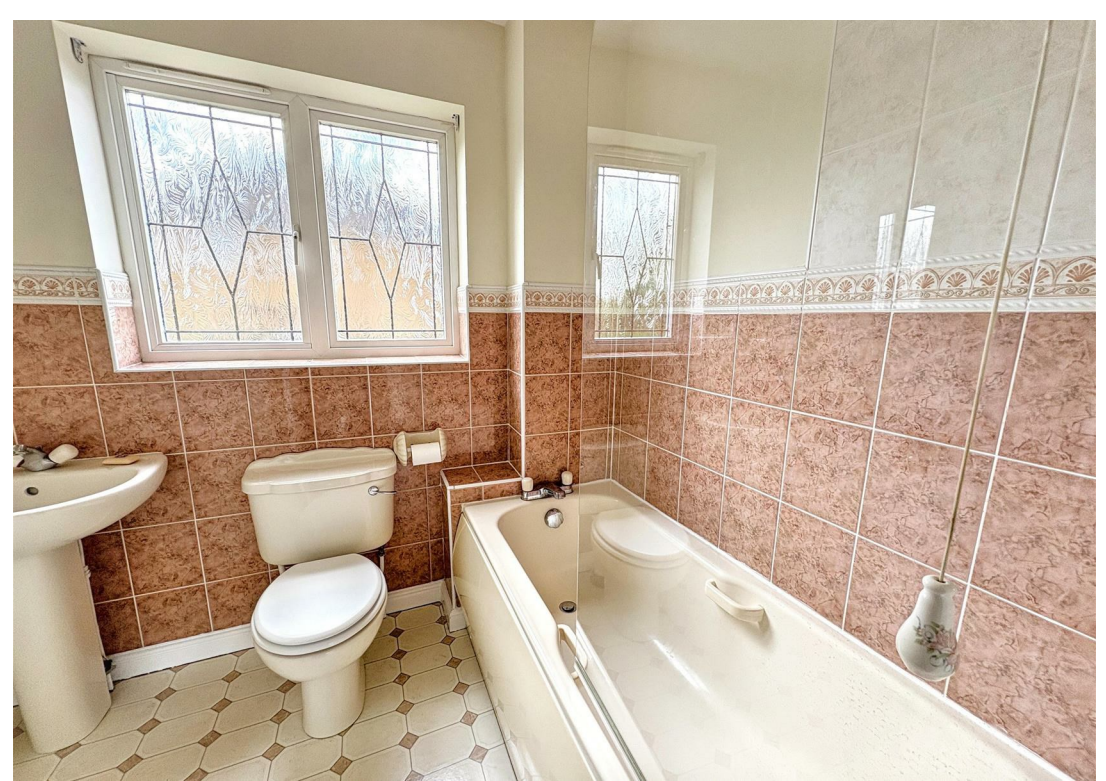
Broadband: We would recommend that any potential buyers conduct their own investigations using Openreach and Ofcom checkers.

Mobile Signal/Coverage: We would recommend that any potential buyers conduct their own investigations using the Ofcom checker.

Should you wish to submit an offer on any property through Matthew Nicholas Estate Agents Limited, you will be required to demonstrate your ability to finance that offer with bank statements, mortgage pre-approval confirmations and/or written confirmation of your status from a solicitor or financial advisor.

Prior to acceptance of any offer on our clients behalf, you will be required to pass an ID and anti-money laundering check. This is conducted via a third party and is chargeable at £60 (inc Vat) per transaction. Please call the office to confirm how to settle it.





# Further Information



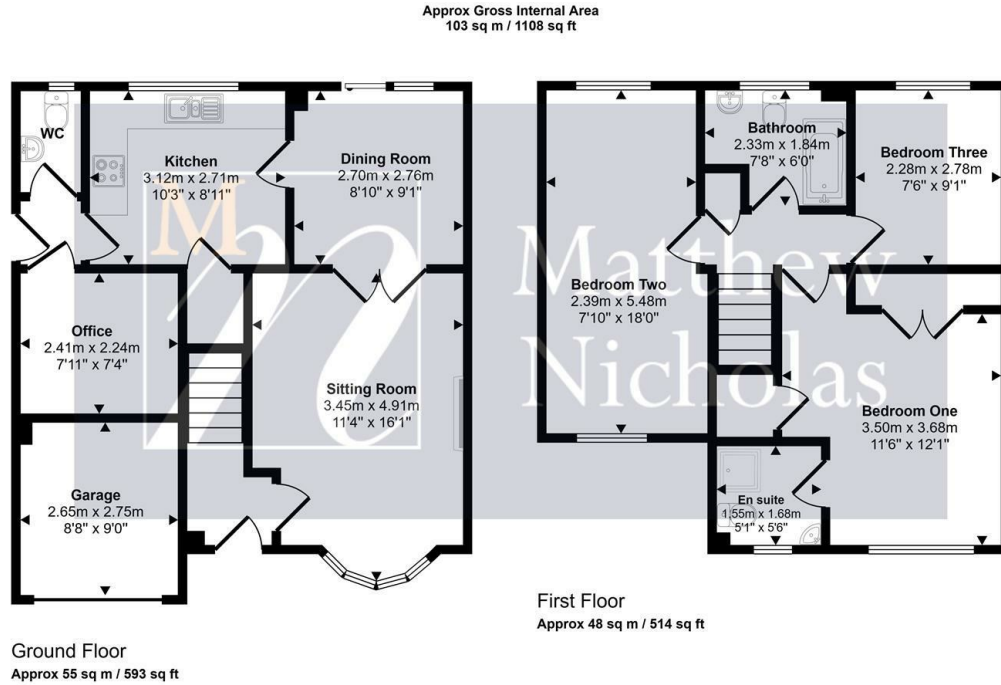
Local Authority: North Northamptonshire Council

Tax Band: C

Floor Area: 1108.00 sq ft

| Energy Efficiency Rating                    |                         | Current | Potential |
|---|-------------------------|---------|-----------|
| Very energy efficient - lower running costs |                         |         |           |
| (92 plus) <b>A</b>                          |                         |         |           |
| (81-91) <b>B</b>                            |                         |         |           |
| (69-80) <b>C</b>                            |                         |         |           |
| (55-68) <b>D</b>                            |                         |         |           |
| (39-54) <b>E</b>                            |                         |         |           |
| (21-38) <b>F</b>                            |                         |         |           |
| (1-20) <b>G</b>                             |                         |         |           |
| Not energy efficient - higher running costs |                         |         |           |
| <b>England &amp; Wales</b>                  | EU Directive 2002/91/EC |         |           |

| Environmental Impact (CO <sub>2</sub> ) Rating                  |                         | Current | Potential |
|---|-------------------------|---------|-----------|
| Very environmentally friendly - lower CO <sub>2</sub> emissions |                         |         |           |
| (92 plus) <b>A</b>  |                         |         |           |
| (81-91) <b>B</b>  |                         |         |           |
| (69-80) <b>C</b>  |                         |         |           |
| (55-68) <b>D</b>  |                         |         |           |
| (39-54) <b>E</b>  |                         |         |           |
| (21-38) <b>F</b>  |                         |         |           |
| (1-20) <b>G</b>   |                         |         |           |
| Not environmentally friendly - higher CO <sub>2</sub> emissions |                         |         |           |
| <b>England &amp; Wales</b>                                      | EU Directive 2002/91/EC |         |           |



This floorplan is only for illustrative purposes and is not to scale. Measurements of rooms, doors, windows, and any items are approximate and no responsibility is taken for any error, omission or mis-statement. Icons of items such as bathroom suites are representations only and may not look like the real items. Made with Made Snappy 360.

Whilst every attempt has been made to ensure accuracy, Matthew Nicholas have provided descriptions, measurements, floorplans and photographs in good faith and accordance with the Consumer Protection from Unfair Trading Regulations 2008 (or the Business Protection from Misleading Marketing Regulations 2008 where applicable). A formal survey has not been carried out and they are intended as a guide only. As such, any information or pictures do not imply inclusion within a sale, any assurance as to their accuracy or any suggestion as to their working order. Any prospective purchaser is advised to ensure that any item of importance to them is checked with us prior to viewing and by their solicitor prior to exchange of contracts. Please contact Matthew Nicholas directly to obtain any information which may be available under the terms of The Energy Performance of Buildings (Certificates and Inspections) (England and Wales) Regulations 2007.

27-29 Newton Road, Wollaston  
Northamptonshire  
NN29 7QN

T 01933 663311  
E enquiries@matthewnicholas.co.uk  
W www.matthewnicholas.co.uk



Matthew  
Nicholas