



Stanley Gardens Road, TW11

£899,950

This beautifully presented home is located in a popular spot, ideal for schools, transport and Teddington High Street. With no onward chain you can move in straight away.

Stanley Gardens Road is excellent for school catchment, primary and secondary. Close to Teddington mainline station, Bushy Park and The River Thames. Teddington High Street is within easy reach.

Features

- Victorian
- Four Bedrooms
- Excellent Location
- No Onward Chain
- Private Garden
- Large Dual Reception Room



Stanley Gardens Road, TW11

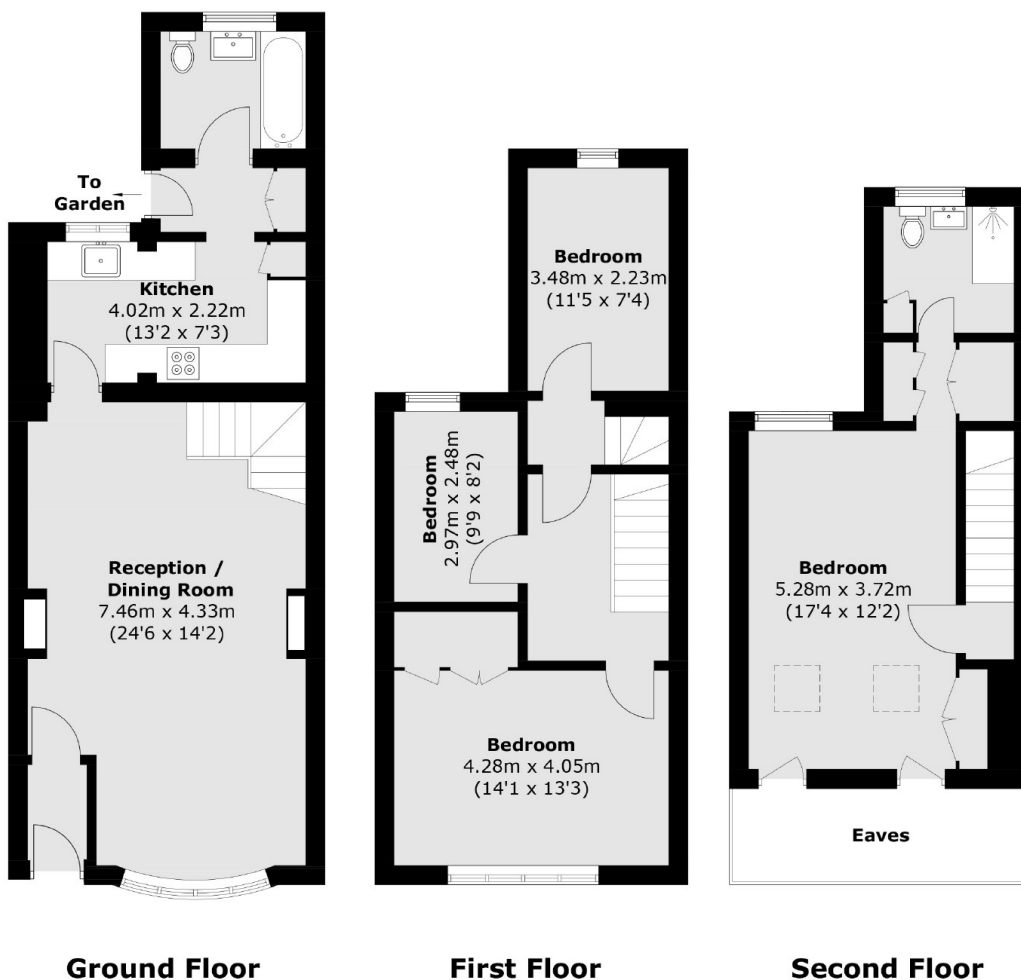
Enter into a welcoming entrance hallway leading to a substantial dual reception room with high ceilings. This versatile space is ideal for both formal entertaining and relaxed family living, with distinct lounge and dining zones that flow beautifully from front to rear. This leads into a large kitchen with plenty of counter top space and ample storage. The ground floor also offers a large a family bathroom and access to the garden.

To the first floor there are three double bedrooms and wooden flooring. To the top floor there is a further double bedroom with an en suite shower room.

The garden is easy to maintain and a lovely space to enjoy.



Stanley Gardens Road, Teddington, TW11



Total area (approx.): 116.3 sq. m (1,251.9 sq. ft)
(Excluding Eaves)