

Westbourne Terrace,
Hyde Park, W2

Dexters



About the property

This stunning white stucco-fronted duplex is located on the elegant, tree-lined Westbourne Terrace, accessed via a private front door.

Beautifully refurbished, the marble-floored entrance hall leads to a spacious west-facing drawing room with ornate ceiling details and a marble gas fireplace. Beyond lies a bespoke kitchen with a six-seater Corian and marble island, fully integrated Miele appliances, and a second reception/family room.

A handcrafted balustrade leads to the bedroom level where the luxurious principal suite offers bespoke units, a generous bathroom, a separate shower room, and French doors opening onto a private decked garden.

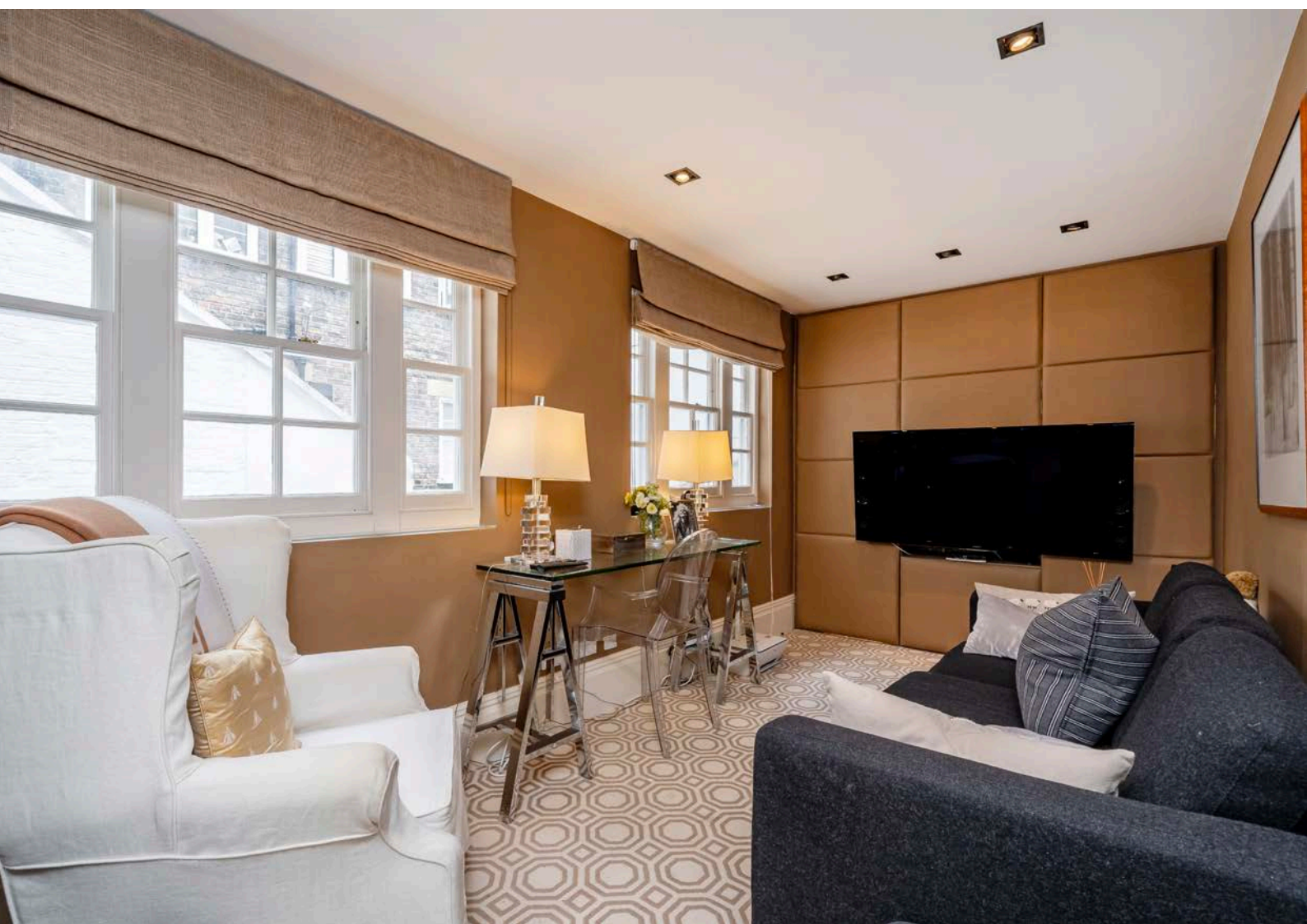
Close to Hyde Park, Westbourne Grove, and Notting Hill, the property combines elegance with comfort, creating an exceptional London home in a highly desirable location for buyers seeking space, privacy, and prestige.



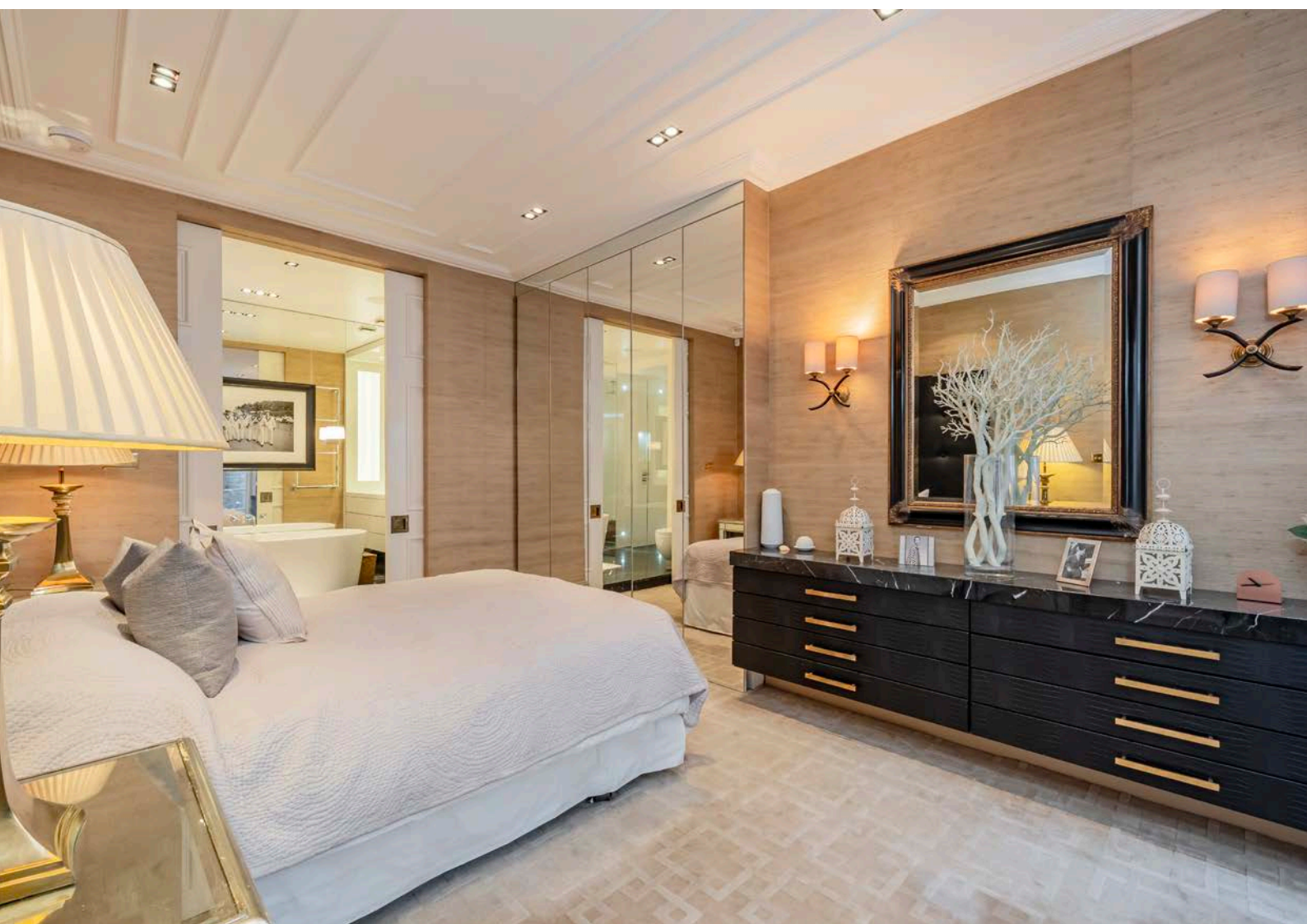
Key features

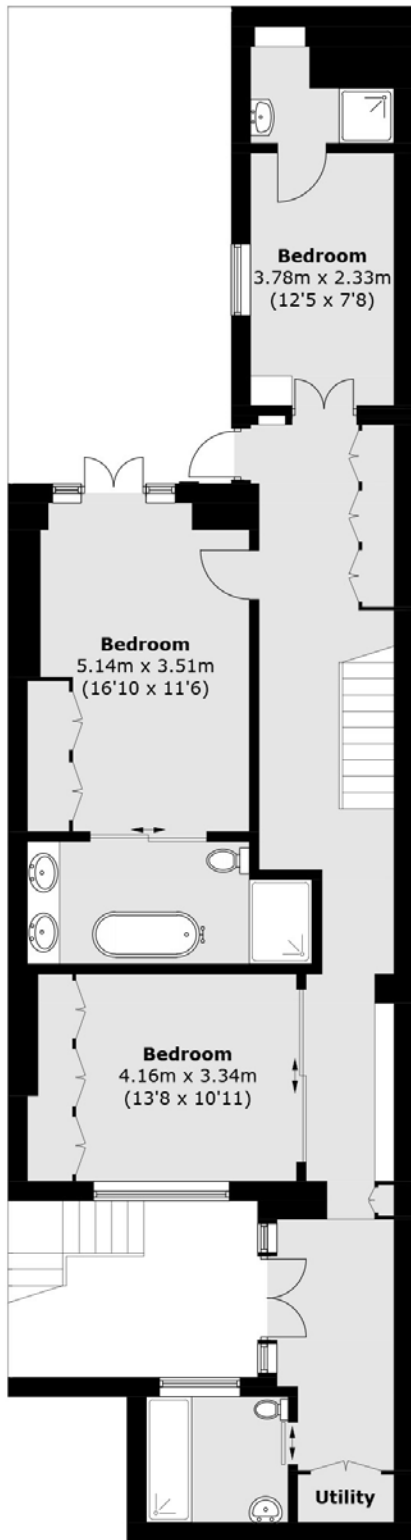
Three Bedrooms
Two Receptions
Private Entrance
Fully Refurbished
High Ceilings
Bespoke Fittings



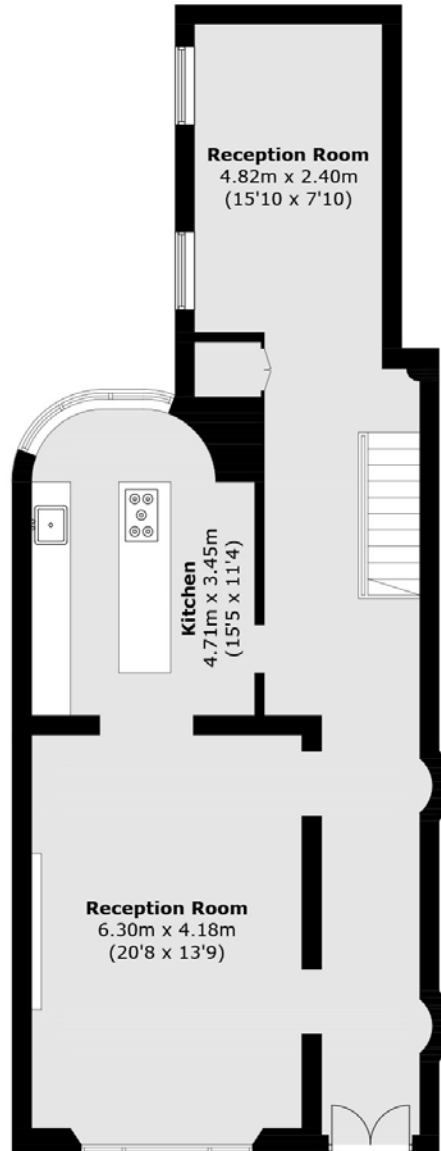








Lower Ground Floor



Raised Ground Floor

TOTAL APPROX. FLOOR AREA 1,859.1 SQ. FT (172.7 SQ. M)(EXCLUDING PATIO)

Energy Rating: C. We aim to make our particulars both accurate and reliable. However they are not guaranteed; nor do they form part of an offer or contract. If you require clarification on any points then please contact us, especially if you're traveling some distance to view. Please note that appliances and heating systems have not been tested and therefore no warranties can be given as to their good working order.



Dexters Westbourne Grove
120 Westbourne Grove
London, W11 2RR
020 7313 3600

Dexters