



## Leeson Street, Aylestone

£190,000 Freehold

Traditional two-bedroom terraced home in Aylestone offering two reception rooms, fitted kitchen, generous bathroom and low-maintenance rear garden. Ideal first purchase or investment opportunity.

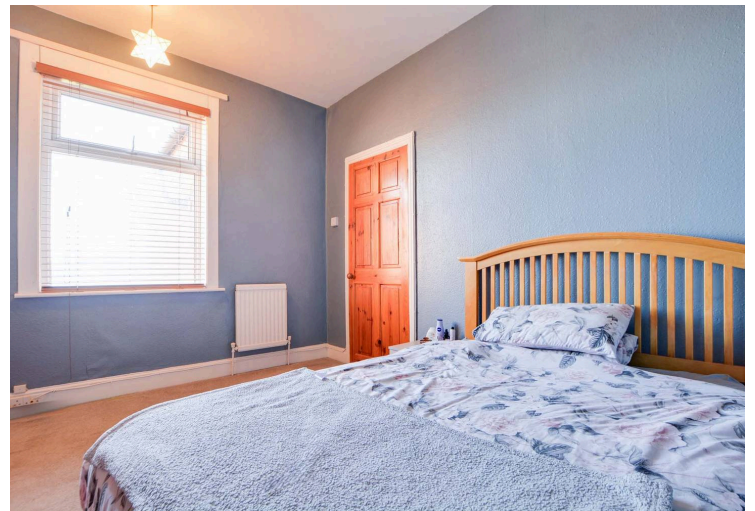
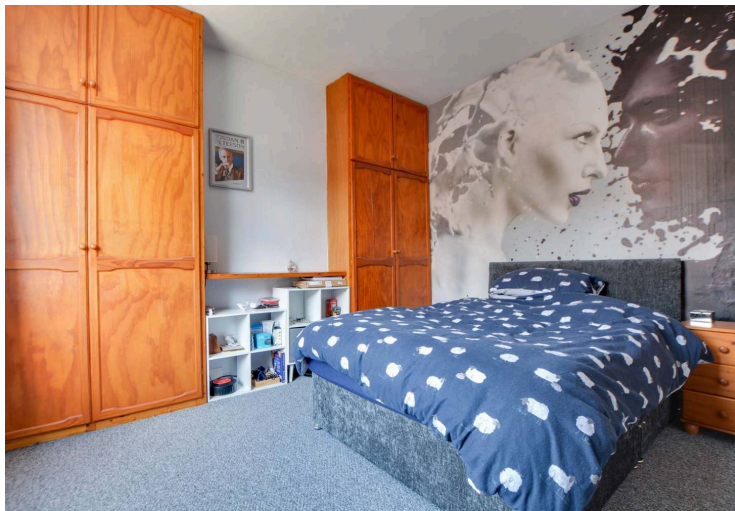
Council Tax band: A

Tenure: Freehold

EPC Energy Efficiency Rating: D

EPC Environmental Impact Rating: E





**Reception Room One / Living Room**

12' 2" x 11' 5" (3.70m x 3.49m)

Entered via a double-glazed solid composite front door; features a double-glazed window to the front elevation, stained wooden floor, chimney breast with fire surround, coving to the ceiling, picture rail, meter cupboard, shelving, and radiator.

**Reception Room Two / Dining Room**

12' 1" x 11' 6" (3.68m x 3.51m)

Features a double-glazed window to the rear elevation, a chimney breast with a living flame gas fire (marble surround and hearth), picture rail, shelving, TV point, and radiator.

**Kitchen**

12' 11" x 6' 1" (3.93m x 1.86m)

Includes a range of base and wall units, wood-effect laminate work surfaces, a breakfast bar, a stainless steel sink/drain, tiled splashbacks, space for a free-standing oven/hob, plumbing for a washing machine, and space for a fridge-freezer.



### **Lobby**

Provides additional storage and access to the rear garden via a double-glazed door.

### **Bedroom One**

12' 0" x 10' 11" (3.66m x 3.32m)

Located at the front elevation with a double-glazed window, double door wardrobes with overhead storage, and a radiator.

### **Bedroom Two**

12' 1" x 10' 1" (3.68m x 3.08m)

Located at the rear elevation with a double-glazed window, an over-stairs cupboard, and a radiator.

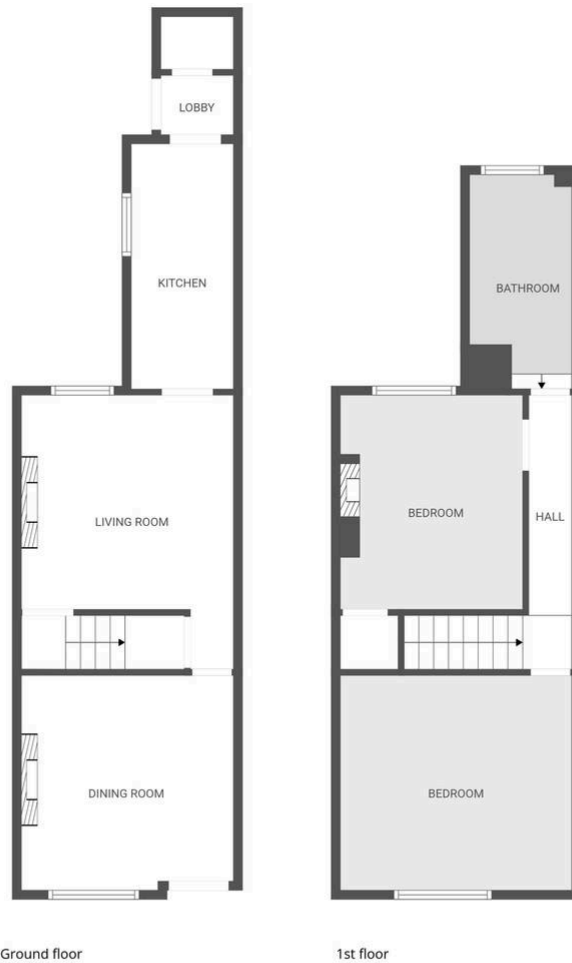
### **Bathroom**

13' 0" x 6' 0" (3.97m x 1.83m)

Features ceramic tiled flooring, a bath with a shower over, a low-level WC, a wash hand basin, tiled splashbacks, a built-in cupboard, and a wall-mounted chrome radiator.

### **Rear Garden**

Low-maintenance gravel patio seating area with mature, established borders.



FLOOR PLAN CREATED BY CUBICASA APP. MEASUREMENTS DEEMED HIGHLY RELIABLE BUT NOT GUARANTEED.

**We'll keep you moving...**



We must inform all prospective purchasers that the measurements are taken by an electronic tape and are provided as a guide only and they should not be used as accurate measurements. We have not tested any mains services, gas or electric appliances, or fixtures and fittings mentioned in these details, therefore, prospective purchasers should satisfy themselves before committing to purchase. Intending purchasers must satisfy themselves by inspection or otherwise to the correctness of the statements contained in these particulars. Knightsbridge Estate Agents & valuers (nor any person in their employment) has any authority to make any representation or warranty in relation to the property. The floor plans are not to scale, and are intended for use as a guide to the layout of the property only. They should not be used for any other purpose. Similarly, the plans are not designed to represent the actual décor found at the property in respect of flooring, wall coverings or fixtures and fittings.