



Clapham Road, SW9

£350,000

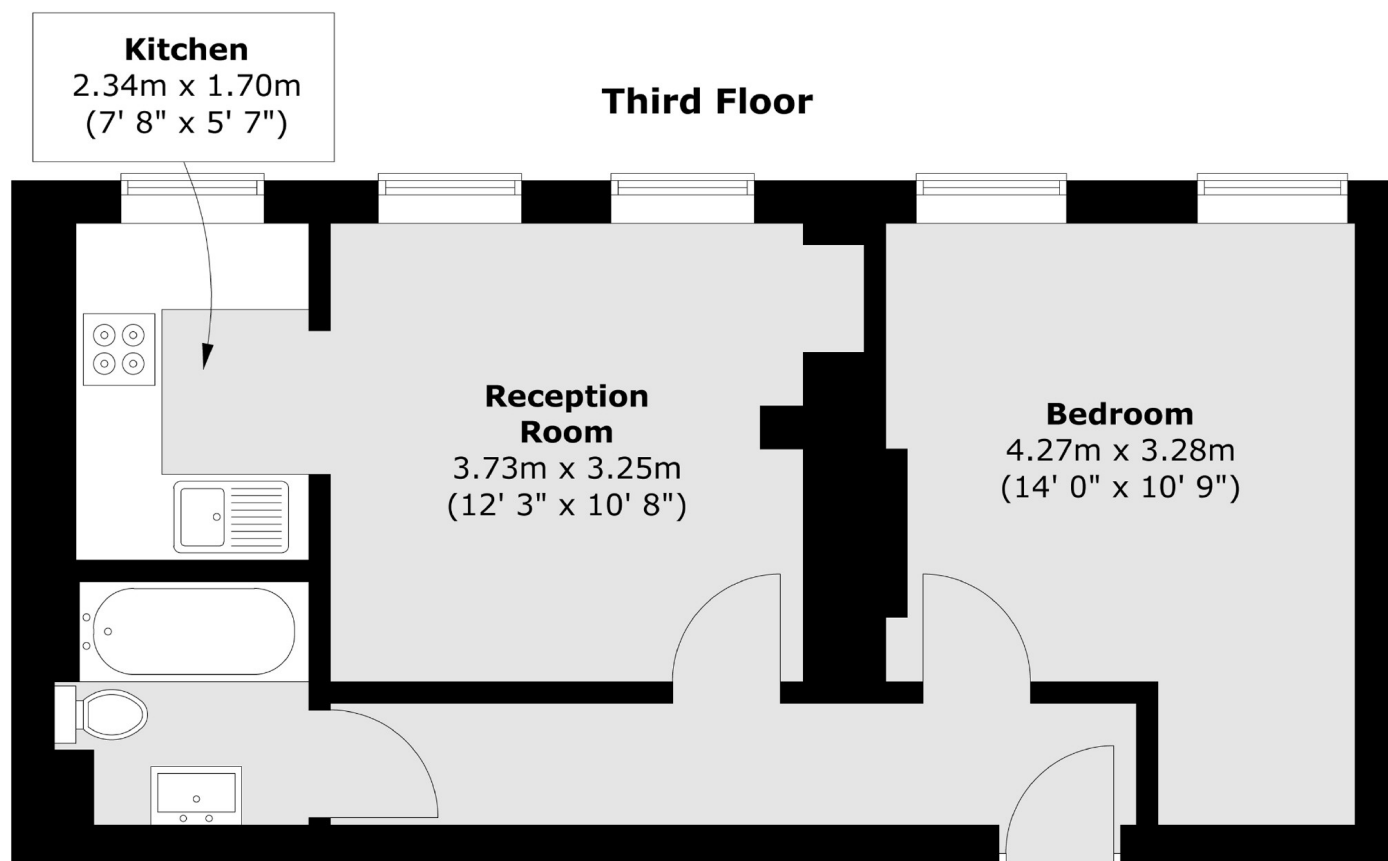
A fabulous one bedroom top floor flat in great condition throughout. The lovely reception room is flooded with natural light and combines brilliantly with the kitchen. There is a modern family bathroom, great storage through and the property benefits from a share of the freehold. This is fabulous home for a first time buyer and busy commuter and benefits from an allocated parking space.

Clapham Road is exceptionally well located, situated between Oval and Stockwell station, with frequent Northern and Victoria Line services. Independent shops, coffee shops, restaurants and some of the best pubs in the area can be found locally.

Features

- One Bedroom
- Top Floor
- Share of Freehold
- Excellent Location
- Parking Space
- Storage

Clapham Road, London, SW9



Total area (approx.) : 39.1 sq. m (421 sq. ft)