



Elizabethan Way, Teignmouth

Teignmouth

Guide Price £335,000

# Elizabethan Way

Teignmouth

Council Tax band: C

Tenure: Freehold

EPC Energy Efficiency Rating: C

EPC Environmental Impact Rating: C

- Modern semi detached house
- 3 bedrooms
- En-Suite shower room
- Utility and cloakroom
- Kitchen/diner
- Allocated parking
- Attractive rear garden
- Early viewing advised





## Hallway

### Description

Door with double glazed panels to front. Stairs rising to 1st floor with under stairs recess.

Radiator, polished tiled flooring, doors to:

Kitchen / Diner 5' 5" x 11' 6" (4.70m x 3.50m)

Measurements not including bay window. Fitted with a modern matching range of high gloss fronted wall and base mounted units and drawers with roll edge work surface over and under unit lighting. 1.5 bowl stainless steel sink unit with mixer tap. Fitted electric double oven and gas hob with cooker hood above. Concealed integrated fridge/freezer and dishwasher. Cupboard housing the central heating boiler. Double glazed window and patio doors to rear, double glazed bay window to side. 2 radiators, inset ceiling spotlights and polished tiled flooring.

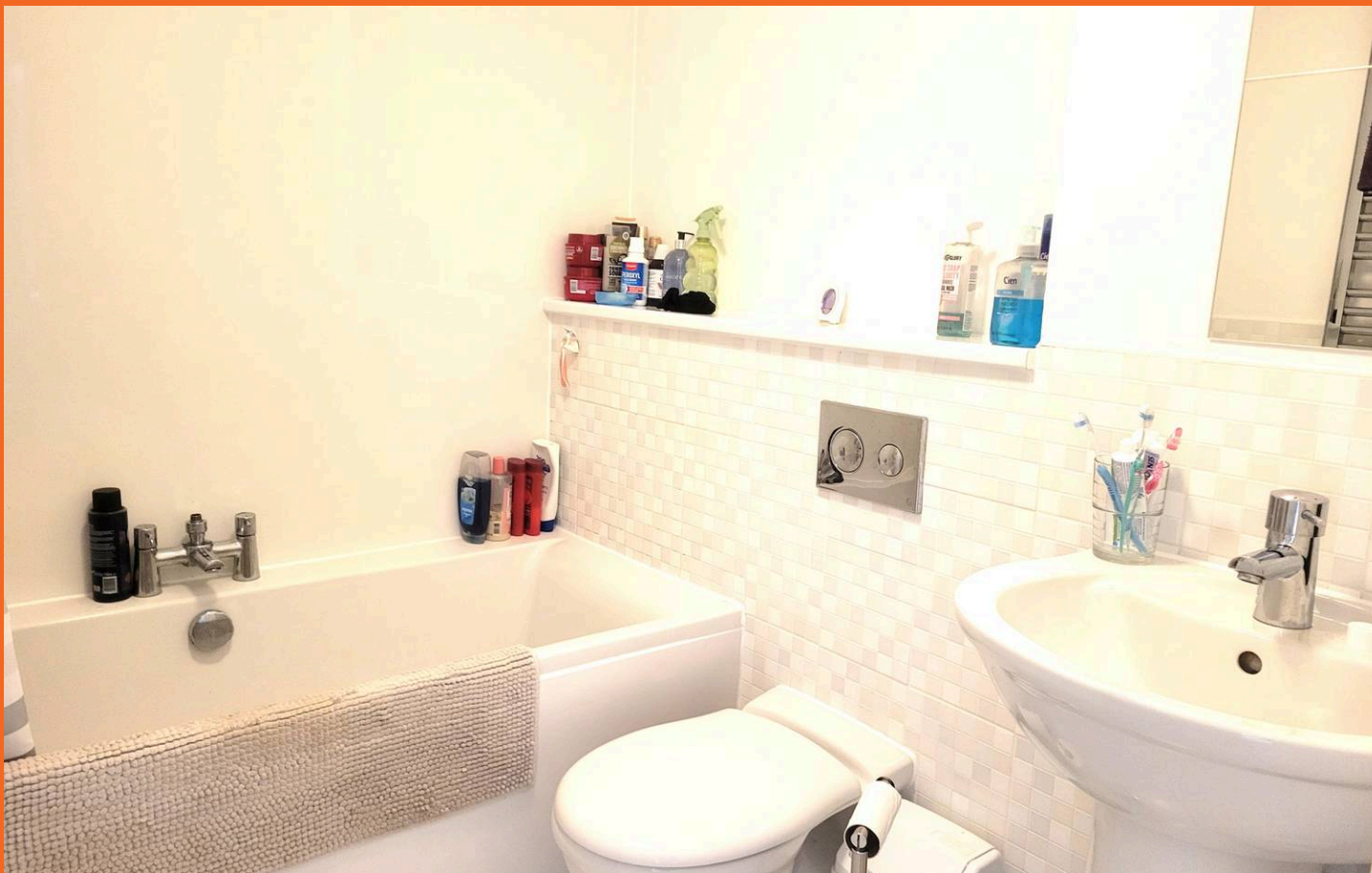


Lounge 15' 6" x 10' 8" (4.72m x 3.25m)

Double glazed bay window to side and double glazed windows to front. 2 radiators.

### Utility Room

Fitted with a modern matching 2 piece white suite comprising of: Low level WC and pedestal wash hand basin. Concealed, integrated washer/dryer. Radiator, extractor fan, polished tiled flooring. Airing cupboard housing the hot water cylinder.



#### Landing

Access hatch to loft space, double glazed window to side. Radiator, doors to:

Bedroom 10' 11" x 6' 10" (3.33m x 2.08m)

Double glazed window to front enjoying sea glimpses, radiator.

#### Bathroom

Fitted with a modern matching 3 piece white suite comprising of: Panelled double ended bath with mixer tap and mains shower, low level WC and pedestal wash hand basin. Chromed ladder style radiator, extractor fan and tiled flooring.

Bedroom 11' 11" x 9' 0" (3.63m x 2.74m)

Double glazed windows to side and rear, fitted double wardrobe, radiator. Door to:

#### En-suite

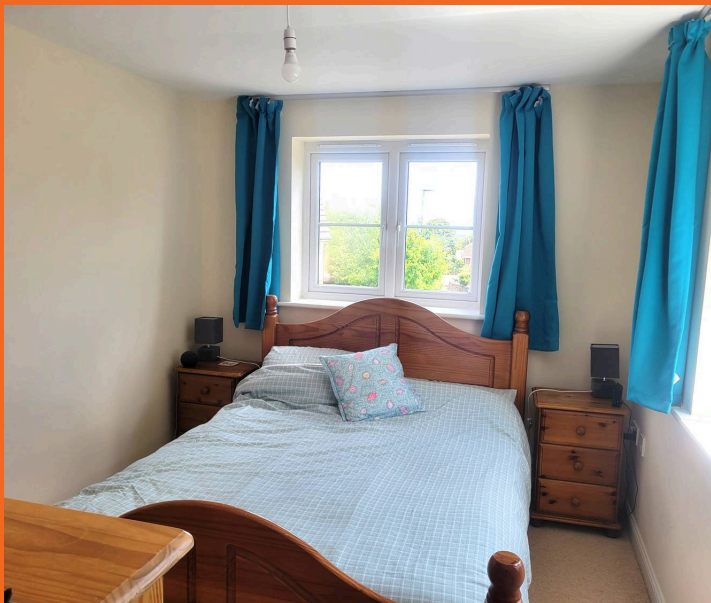
Fitted with a modern matching 3 piece white suite comprising of: Shower cubicle with mains shower, low level WC and pedestal wash hand basin with mixer tap. Shaver point. Chromed ladder style radiator, double glazed window to rear. Inset ceiling spotlights, tiled flooring, extractor fan.

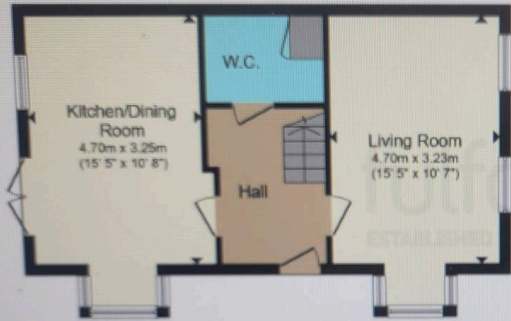
Bedroom 10' 10" x 8' 5" (3.30m x 2.57m)

Double glazed windows to front and side enjoying sea glimpses, radiator.

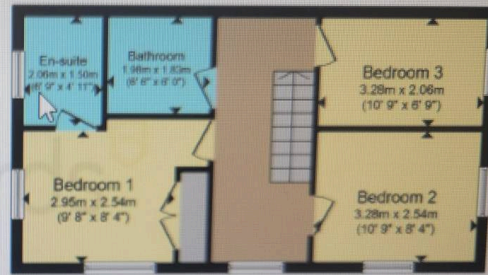
#### Outside

To the rear of the property the garden is laid partly to lawn with stone chipped borders. There is an outside tap and shed. The garden is enclosed by pannelled fencing and a gate gives access to the front of the property. There are 2 allocated parking spaces.





Ground Floor



First Floor



## Nexmove

Riviera Buildings, 3 Den Road, Devon - TQ14 8AJ

01626 681972 • [sales@nexmove.co.uk](mailto:sales@nexmove.co.uk) • [www.nexmove.co.uk/](http://www.nexmove.co.uk/)