



Bromley High Street, E3

£2,400 Per week

A well presented three bedroom apartment aimed at sharers by Bow Road station. This property has three large double bedrooms, no reception and a large separate kitchen.

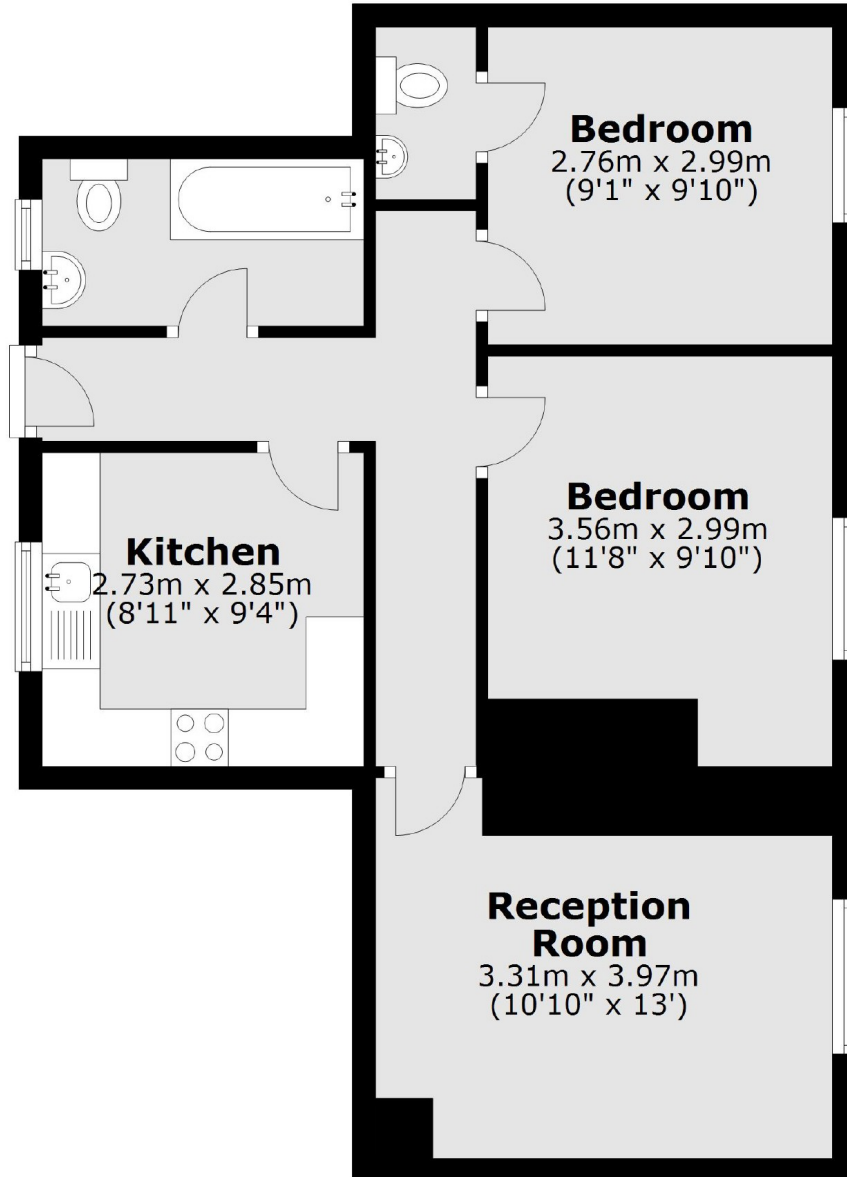
Amazing location within easy reach of Bow Road, Stratford, Mile End and Devon's Road for all local shops, cafés and restaurants.

Features

- Three Double Bedrooms
- No Reception
- Separate Kitchen
- Furnished
- Top Floor
- Central Location

Bromley High Street,
London, E3

Fourth Floor



Total area: approx. 54.3 sq. metres (584.1 sq. feet)